

Product datasheet for **MG203459**

Ascl2 (NM_008554) Mouse Tagged ORF Clone

Product data:

Product Type:	Expression Plasmids
Product Name:	Ascl2 (NM_008554) Mouse Tagged ORF Clone
Tag:	TurboGFP
Symbol:	Ascl2
Synonyms:	2410083I15Rik; bHLHa45; Mash2
Mammalian Cell Selection:	Neomycin
Vector:	pCMV6-AC-GFP (PS100010)
E. coli Selection:	Ampicillin (100 ug/mL)
ORF Nucleotide Sequence:	>MG203459 representing NM_008554 Red=Cloning site Blue=ORF Green=Tags(s)

TTTTGTAATACGACTCACTATAGGGCGGCCGGAATTCGTCGACTGGATCCGGTACCGAGGAGATCTGCC
GCC**CGATCGCC**

ATGGAAGCACACCTTGACTGGTACGGGGTCCCAGGACTGCAGGAGGCCAGCGACGCGTGCCTAGGGAGT
CCTGCAGCAGTGCCTGCCTGAGGCCCGTGAAGGTGCAAACGTCCACTTCCCACCGCACCCGGTTCCTCG
CGAGCACTTTTCTGTGCCGACCAGAACTCGTAGCAGGGGCCAGGGGCTGAATGCAAGCTTGATGGAC
GGCGGCGCGTGCCAGACTCATGCCACCTCGTCTGGAGTCGCTGGAGCCTGCGCTGCTCGCGGAGAC
AAGCGTCTCCGGAATTGCTGCGCTGCAGCCGGCGCGCGATCTGGAGCAACCGAGGCCAGCAGCAGCTC
GGCTGCCGTGGCAGCCGCAATGAGCGCGAGCGCAACCGCGTAAAGCTGGTAAACTTGGGCTTCCAGGGC
CTGCGGCAGCACGTGCCGACGGCGCGCAACAAGAAGCTGAGTAAGGTGGAGACGCTGCGCTCCGCGG
TAGAGTACATTGCTGCGCTGCAGCGGCTGCTCGCAGAGCACGACGCGGTGCGTGCCGCGCTCGTGGGG
GCTGTTAACACCCGCTACTCCGCCGTCCGATGAGTGCGCGCAGCCCTCTGCCTCCCCTGCCAGCGGTCT
CTGTCTGCGCTCTACGTCTCCGTCCCCGACCGCTGGGTGCTCTGAGCCTACCTCCCCGCGTCCG
CCTACTCGTCGGAGAAAGCAGCTGCGAGGGAGAGCTAAGCCCGATGGAGCAGGAGCTGCTTGACTTTTC
CAGTTGGTTAGGGGGCTAC

AC**GGGCCGCTCGAG** - GFP Tag - GTTTAA



[View online »](#)

Protein Sequence: >MG203459 representing NM_008554
 Red=Cloning site Green=Tags(s)

MEAHLDWYGVPLQEASDAPRESCSSALPEAREGANVHFPPHPVPREHFSCAPELVAGAQLNASLMD
 GGALPRLMPTSSGVAGACAARRRQASPELLRCSRRRRSGATEASSSSAAVARRNERNRVKLVNLGFQA
 LRQHVPHGANKKLSKVETLRSAYEYIRALQRLLAEHDAVRAALAGLLTPATPPSDECAQPSASPASAS
 LSCASTSPSPDRLGCSEPTSPRSAYSSEESSCEGELSPMEQELLDFFSSWLGYY

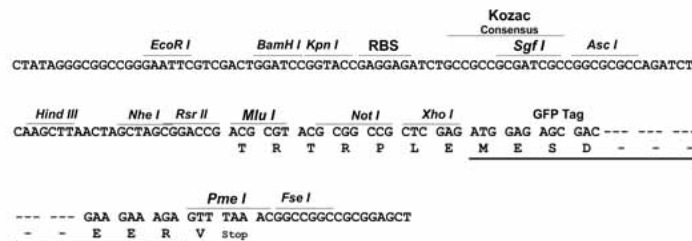
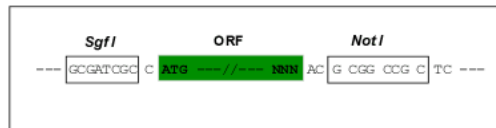
TRPLE - GFP Tag - V

Chromatograms: https://cdn.origene.com/chromatograms/ja1791_a04.zip

Restriction Sites: SgfI-NotI

Cloning Scheme:

Cloning sites used for ORF Shutting:



ACCN: NM_008554

ORF Size: 789 bp

OTI Disclaimer: The molecular sequence of this clone aligns with the gene accession number as a point of reference only. However, individual transcript sequences of the same gene can differ through naturally occurring variations (e.g. polymorphisms), each with its own valid existence. This clone is substantially in agreement with the reference, but a complete review of all prevailing variants is recommended prior to use. [More info](#)

OTI Annotation: This clone was engineered to express the complete ORF with an expression tag. Expression varies depending on the nature of the gene.

Components: The ORF clone is ion-exchange column purified and shipped in a 2D barcoded Matrix tube containing 10ug of transfection-ready, dried plasmid DNA (reconstitute with 100 ul of water).

Reconstitution Method:

1. Centrifuge at 5,000xg for 5min.
2. Carefully open the tube and add 100ul of sterile water to dissolve the DNA.
3. Close the tube and incubate for 10 minutes at room temperature.
4. Briefly vortex the tube and then do a quick spin (less than 5000xg) to concentrate the liquid at the bottom.
5. Store the suspended plasmid at -20°C. The DNA is stable for at least one year from date of shipping when stored at -20°C.

RefSeq: [NM_008554.3](#)

RefSeq Size: 1606 bp

RefSeq ORF: 792 bp

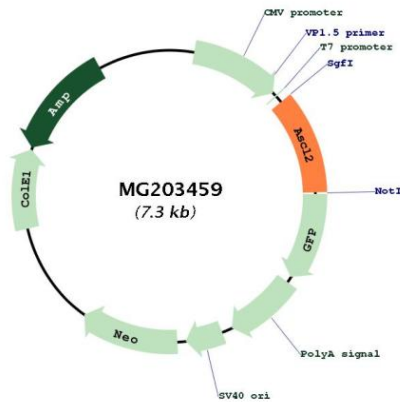
Locus ID: 17173

UniProt ID: [O35885](#)

Cytogenetics: 7 88.08 cM

Gene Summary: AS-C proteins are involved in the determination of the neuronal precursors in the peripheral nervous system and the central nervous system.[UniProtKB/Swiss-Prot Function]

Product images:



Circular map for MG203459