

Product datasheet for **MG203423**

Car1 (NM_009799) Mouse Tagged ORF Clone

Product data:

Product Type: Expression Plasmids
Product Name: Car1 (NM_009799) Mouse Tagged ORF Clone
Tag: TurboGFP
Symbol: Car1
Synonyms: AW555628; Ca1; Car-1
Mammalian Cell Selection: Neomycin
Vector: pCMV6-AC-GFP (PS100010)
E. coli Selection: Ampicillin (100 ug/mL)
ORF Nucleotide Sequence: >MG203423 representing NM_009799
 Red=Cloning site Blue=ORF Green=Tags(s)

TTTTGTAATACGACTCACTATAGGGCGGCCGGAATTCGTCGACTGGATCCGGTACCGAGGAGATCTGCC
 GCC**CGATCGCC**

ATGGCAAGTGCAGACTGGGGATATGGAAGCGAAAATGGTCCTGACCAATGGAGCAAGCTGTATCCCATTG
 CCAATGGAACAACCACTCTCTATTGATATTAACCAGTGAAGCAATCATGACTCCTCTCTGAAACC
 ACTCAGCATCTCCTATAATCCTGCAACTGCCAAAGAAATTGTTAACGTGGGACATTCTTTCCATGTAATT
 TTTGATGACAGTAGCAACCAATCTGTTCTGAAAGGTGGCCCTCTTGCTGATAGCTATCGGCTCACTCAGT
 TCCATTTTCACTGGGCAACTCAAACGACCATGGCTCTGAGCACACCGTGGATGGAAGTACTGATTTCTGG
 AGAGCTTCACTTAGTTCCTGGAATTCTGCAAAGTACTCCAGTGTCTGAAAGCCATCTCCAAGGCTGAT
 GGCTGGCAATCCTTGCGTTTTGATGAAGTTGGTCCAGCCAACCAAGCCTGCAGAAAGTACTTGATG
 CTCTAACTCAGTAAAATAAGGGAAAACGAGCCCCATTACAAATTTTGACCCATCCAGTCTGCTTCC
 TTCATCTCTGGATTACTGGACCTACTTTGGCTCTGACTCACCTCCTCTTCAATGAAAGTGTGACCTGG
 GTGATCTGCAAGGATAGCATCAGTCTAAGCCAGAGCAGCTGGCCAGCTCCGTGGTCTTCTGTCAAGTG
 CAGAGGGAGAGCCTGCAGTTCAGTCTGAGCAACCACCGTCCACCCCAACCCCTGAAGGGCAGAACAGT
 CAGAGCCTCATT

ACGCGTACGCGGCCGCTCGAG - GFP Tag - GTTTAA



[View online »](#)

Protein Sequence: >MG203423 representing NM_009799
Red=Cloning site Green=Tags(s)

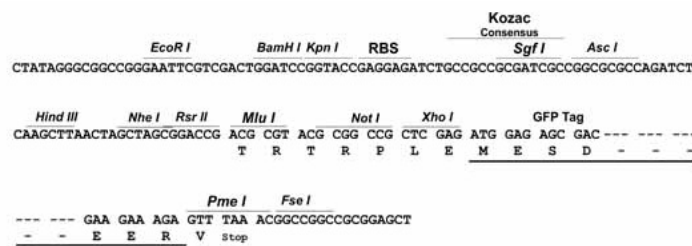
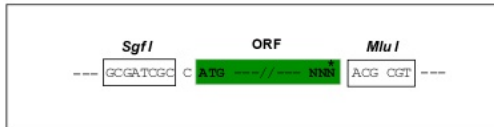
MASADWGYSENGPDQWSKLYPIANGNNQSPIDIKTSEANHDSSLKPLSISYNPATAKEIVNVGHSFHVI
 FDDSSNQSVLKGGLADSYRLTQFHFWGNSNDHGSEHTVDGTRYSGELHLVHWNSAKYSSASEAISKAD
 GLAILGLVMKVG PANPSLQKVL DALNSVKTKGRAPFTNFDPSLLPSSLDYWTYFGSLTHPPLHESVTW
 VICKDSISLSPEQLAQLRGLLSSAEGEPAVPVLSNHRPPQPLKGRTRVRSF

TRTRPLE - GFP Tag - V

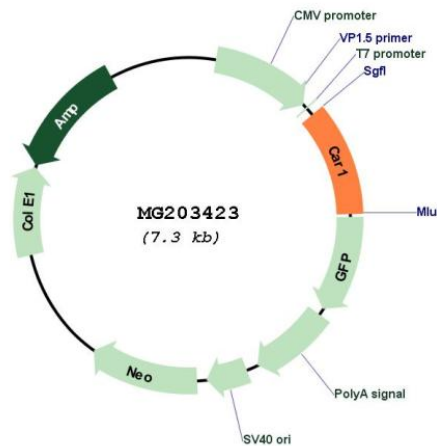
Restriction Sites: SgfI-MluI

Cloning Scheme:

Cloning sites used for ORF Shutting:



Plasmid Map:



ACCN: NM_009799

ORF Size: 783 bp

OTI Disclaimer:	The molecular sequence of this clone aligns with the gene accession number as a point of reference only. However, individual transcript sequences of the same gene can differ through naturally occurring variations (e.g. polymorphisms), each with its own valid existence. This clone is substantially in agreement with the reference, but a complete review of all prevailing variants is recommended prior to use. More info
OTI Annotation:	This clone was engineered to express the complete ORF with an expression tag. Expression varies depending on the nature of the gene.
Components:	The ORF clone is ion-exchange column purified and shipped in a 2D barcoded Matrix tube containing 10ug of transfection-ready, dried plasmid DNA (reconstitute with 100 ul of water).
Reconstitution Method:	<ol style="list-style-type: none">1. Centrifuge at 5,000xg for 5min.2. Carefully open the tube and add 100ul of sterile water to dissolve the DNA.3. Close the tube and incubate for 10 minutes at room temperature.4. Briefly vortex the tube and then do a quick spin (less than 5000xg) to concentrate the liquid at the bottom.5. Store the suspended plasmid at -20°C. The DNA is stable for at least one year from date of shipping when stored at -20°C.
RefSeq:	NM_009799.4
RefSeq Size:	1195 bp
RefSeq ORF:	786 bp
Locus ID:	12346
UniProt ID:	P13634
Cytogenetics:	3 3.18 cM
Gene Summary:	Reversible hydration of carbon dioxide.[UniProtKB/Swiss-Prot Function]