

Product datasheet for **MG203406**

Rchy1 (BC057143) Mouse Tagged ORF Clone

Product data:

Product Type: Expression Plasmids
Product Name: Rchy1 (BC057143) Mouse Tagged ORF Clone
Tag: TurboGFP
Symbol: Rchy1
Synonyms: mARNIP, Pirh2, ARNIP, CHIMP, PRO1996
Mammalian Cell Selection: Neomycin
Vector: pCMV6-AC-GFP (PS100010)
E. coli Selection: Ampicillin (100 ug/mL)
ORF Nucleotide Sequence: >MG203406 representing BC057143
Red=Cloning site Blue=ORF Green=Tags(s)

TTTTGTAATACGACTCACTATAGGGCGGCCGGAATTCGTCGACTGGATCCGGTACCGAGGAGATCTGCC
GCC**CGATCGCC**

ATGGCGGCGACGGCGCGGAAGATGGCGTCCGCAACCTGGCGCAGGGGCCGCGGGCTGCGAGCACTATG
ACAGAGCTTGTCTCCTCAAGGCACCTTGTGTGACAAGCTTTATACCTGCCGGCTGTGTCACGATACCAA
TGAAGATCATCAGCTAGATCGTTTCAAAGTCAAGGAAGTGCAGTGCATCAACTGTAAAACTCCAACAT
GCCAGCAGACTTGTGAAGACTGTAGCACATTGTTGGAGAATATTACTGCAGTATTTGCCACCTGTTTG
ACAAAGATAAGAGGCAGTACCACTGTGAGAGCTGTGGATTTGTAGGATTGGTCCAAAGGAAGATTTTTT
CCATTGCTTAAAATGTAATTTATGCCTAACACGAATCTTCGAGGAAAACACAAGTGTATTGAAAATGTT
TCCCGGCAGAATTGTCCAATATGCTTGGAGGACATTCACACCTCCCGTGTGTTGCTCACGTCTTGCCGT
GTGGGCATCTCCTACATAGAACGTGTTATGAAGAAATGTTGAAAGAAGGTTACAGATGCCATTGTGTAT
GCATTCTGCCTTAGACATGACTCGGTAAGGAGACAAGTACTGAGGTAGCAGACTCCCATGCCA
TCCGAATACCAGAACGTGACTGTTGACATTCTCTGCAATGACTGTAATGGACGATCCACAGTCCAGTTCC
ATATCTTAGGCATGAAATGTAAGCTTTGTGACTCCTACAATACTGCCAAGCTGGAGGCCGTAGAGTGCC
AGTGGATCAGCAG

ACGCGTACGCGGCCGCTCGAG - GFP Tag - GTTTAA



[View online »](#)

Protein Sequence: >MG203406 representing BC057143
 Red=Cloning site Green=Tags(s)

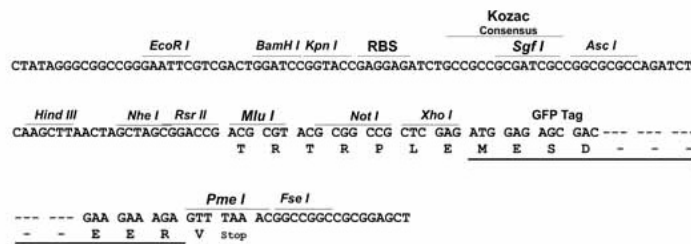
MAATAREDGVRNLAQGPRGCEHYDRACLLKAPCCDKLYTCRLCHDTNEDHQLDRFKVKEVQCINCEKLQH
 AQTTCEDCSTLFGEYYCSICHLFDKDKRQYHCESGICRIGPKEDFFHCLKCNLCLTTNLRGKHKCIENV
 SRQNCPILEDIHTSRVVAHVLP CGHLLHRTCYEEMLKEGYRCP LCMHSALDMTRYWRQLDTEVAQT PMP
 SEYQNVTV DILCND CNGRSTVQFHILGMKCKL CDSYNTAQAGGRRVPVDQQ

TRTRPLE - GFP Tag - V

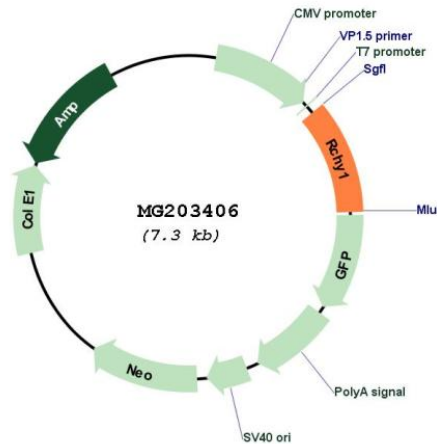
Restriction Sites: SgfI-MluI

Cloning Scheme:

Cloning sites used for ORF Shutting:



Plasmid Map:



ACCN: BC057143

ORF Size: 785 bp

OTI Disclaimer:	The molecular sequence of this clone aligns with the gene accession number as a point of reference only. However, individual transcript sequences of the same gene can differ through naturally occurring variations (e.g. polymorphisms), each with its own valid existence. This clone is substantially in agreement with the reference, but a complete review of all prevailing variants is recommended prior to use. More info
OTI Annotation:	This clone was engineered to express the complete ORF with an expression tag. Expression varies depending on the nature of the gene.
Components:	The ORF clone is ion-exchange column purified and shipped in a 2D barcoded Matrix tube containing 10ug of transfection-ready, dried plasmid DNA (reconstitute with 100 ul of water).
Reconstitution Method:	<ol style="list-style-type: none">1. Centrifuge at 5,000xg for 5min.2. Carefully open the tube and add 100ul of sterile water to dissolve the DNA.3. Close the tube and incubate for 10 minutes at room temperature.4. Briefly vortex the tube and then do a quick spin (less than 5000xg) to concentrate the liquid at the bottom.5. Store the suspended plasmid at -20°C. The DNA is stable for at least one year from date of shipping when stored at -20°C.
RefSeq:	BC057143 , AAH57143
RefSeq Size:	1989 bp
RefSeq ORF:	785 bp
Locus ID:	68098
Cytogenetics:	5 E2
Gene Summary:	This gene encodes a protein containing CHY-, CTCHY-, and RING-type zinc-fingers. The encoded protein functions as an E3 ubiquitin ligase, and mediates the degradation of target proteins such as p53. The activity of this protein is important in cell cycle regulation. Alternative splicing results in multiple transcript variants. [provided by RefSeq, Nov 2012]