

Product datasheet for **MG203388**

Cavin3 (NM_028444) Mouse Tagged ORF Clone

Product data:

Product Type: Expression Plasmids
Product Name: Cavin3 (NM_028444) Mouse Tagged ORF Clone
Tag: TurboGFP
Symbol: Cavin3
Synonyms: 3110015B12Rik; 6330514M23Rik; SRBC
Mammalian Cell Selection: Neomycin
Vector: pCMV6-AC-GFP (PS100010)
E. coli Selection: Ampicillin (100 ug/mL)
ORF Nucleotide Sequence: >MG203388 representing NM_028444
 Red=Cloning site Blue=ORF Green=Tags(s)

TTTTGTAATACGACTCACTATAGGGCGGCCGGAATTCGTCGACTGGATCCGGTACCGAGGAGATCTGCC
 GCC**CGATCGCC**

ATGGGGGAGAGCGCACTGGAGCCCGGACCTGTGCCTGAGACGCCCGCAGGGGGTCCGGTGCACGCAGTCA
 CCGTGGTGACCTTGCTGGAGAAATTGGCCACCATGCTGGAGGCTCTGCGGGAGCGGCAAGGCGGCCTGGC
 TGAGAGGCAGGGCGCCTGGCGGGCTCCGTGCGTCGCATACAGAGTGGCCTGGGTGCGCTGAGTCGCAGC
 CACGACACCACCAGCAACACTGACGCAGCTGCTGGCCAAGGCGGAGCGCTGGGCTCGCACGCCGACG
 CAGCCCAGGAGCGGGCCGTGCGTCGCGTGTCTCAGGTGCAGCGGTTGGAGCCAACCACGGGCTGCTGGT
 GCGCGCGGGAAGCTGCACGTCCTGCTCTCAAGGAGGAGACTGAAATTCAGCCCGCGCCTTCCAGAAA
 GTCCCAGAGCTCTTGGGTCCGGAGGACAGTTGGTGTGGGCCAGATCAGCCAGAGGATGAAGTTGGAG
 AGAGTTCTGAAGAGGAGCCAGTGGAGTCCAGGGCTCAGCGGCTGCGCCGCACTGGTTTACAGAAAGTTCA
 AAGCCTGAAAAGGGCTCTTTCCAGTCGTAAGCAGCACAGCCACACCAGTCAAGCCGCCACGCGTAGGG
 CCTGTCCGGAGCTCTGAAGGCCATCAGAAGGCCAGCCTGCAGCTCAGCCTGAAATGGAGTCCGAGCTCG
 AGACTGCCCTGGAGCCAGAACCTCCTCAACCTACCAAGGAAGATCCTGAGAAACCCGTGCTTCAAATAGA
 GAGCGCAGCC

AGCGGACCGACGCGTACGCGGCCGCTCGAG - GFP Tag - GTTTAA



[View online »](#)

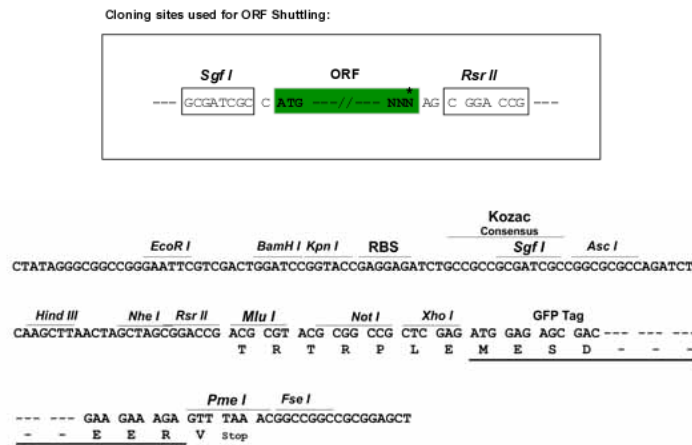
Protein Sequence: >MG203388 representing NM_028444
Red=Cloning site Green=Tags(s)

MGESALEPGVPVETPAGGPVHAVTVVTLLEKLATMLEALRERQGGLAERQGGLAGSVRRIQSGLGALSRS
 HDTTSNLTQLLAKAERVGSHADAAQERAVRRAAQVQRLEANHGLLVARGKLHVLLFKEETEIPARAFQK
 VPELLGPEDQLVLGPDQPEDEVGESSEEEPVESRAQRLRRTGLQKVQSLKRALSSRKAQAQTPVKPPRVG
 PVRSEGPSEGQPAAPQPEMESELETALEPEPPQPTKEDPEKPVLIQIESAA

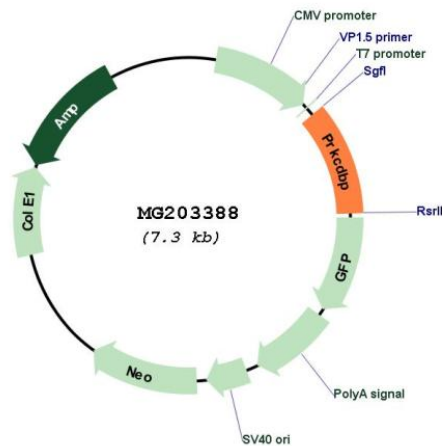
SGPTRRRLE - GFP Tag - V

Restriction Sites: SgfI-RsrII

Cloning Scheme:



Plasmid Map:



ACCN: NM_028444

ORF Size: 780 bp

OTI Disclaimer:	The molecular sequence of this clone aligns with the gene accession number as a point of reference only. However, individual transcript sequences of the same gene can differ through naturally occurring variations (e.g. polymorphisms), each with its own valid existence. This clone is substantially in agreement with the reference, but a complete review of all prevailing variants is recommended prior to use. More info
OTI Annotation:	This clone was engineered to express the complete ORF with an expression tag. Expression varies depending on the nature of the gene.
Components:	The ORF clone is ion-exchange column purified and shipped in a 2D barcoded Matrix tube containing 10ug of transfection-ready, dried plasmid DNA (reconstitute with 100 ul of water).
Reconstitution Method:	<ol style="list-style-type: none">1. Centrifuge at 5,000xg for 5min.2. Carefully open the tube and add 100ul of sterile water to dissolve the DNA.3. Close the tube and incubate for 10 minutes at room temperature.4. Briefly vortex the tube and then do a quick spin (less than 5000xg) to concentrate the liquid at the bottom.5. Store the suspended plasmid at -20°C. The DNA is stable for at least one year from date of shipping when stored at -20°C.
RefSeq:	NM_028444.1 , NP_082720.1
RefSeq Size:	1026 bp
RefSeq ORF:	783 bp
Locus ID:	109042
UniProt ID:	Q91VJ2
Cytogenetics:	7 E3
Gene Summary:	Regulates the traffic and/or budding of caveolae (By similarity). Plays a role in caveola formation in a tissue-specific manner. Required for the formation of caveolae in smooth muscle but not in the lung and heart endothelial cells (PubMed: 28285351, PubMed:23652019). Regulates the equilibrium between cell surface-associated and cell surface-dissociated caveolae by promoting the rapid release of caveolae from the cell surface (PubMed:25588833). Plays a role in the regulation of the circadian clock. Modulates the period length and phase of circadian gene expression and also regulates expression and interaction of the core clock components PER1/2 and CRY1/2 (PubMed:23079727).[UniProtKB/Swiss-Prot Function]