

Product datasheet for **MG203346**

Sla2 (NM_029983) Mouse Tagged ORF Clone

Product data:

Product Type: Expression Plasmids
Product Name: Sla2 (NM_029983) Mouse Tagged ORF Clone
Tag: TurboGFP
Symbol: Sla2
Synonyms: A930009E21Rik; AI430952; SLAP-2; SLAP2
Mammalian Cell Selection: Neomycin
Vector: pCMV6-AC-GFP (PS100010)
E. coli Selection: Ampicillin (100 ug/mL)
ORF Nucleotide Sequence: >MG203346 representing NM_029983
Red=Cloning site Blue=ORF Green=Tags(s)

TTTTGTAATACGACTCACTATAGGGCGGCCGGAATTCGTCGACTGGATCCGGTACCGAGGAGATCTGCC
GCC**CGATCGCC**

ATGGGAAGTTTGTCCAGCAGAGGGAAAACCTCCAGCCCCAGCCCCAGCTCCTCTGGTCCAGACCAGGAAC
CCGTGTCCATGCAACCAGAAAGACGCAAGGTCACAGCTGTGGCCCTGGGCAGTTTCCCAGCAGGTGAACA
GGCCAGACTATCTCTGAGACTCGGGGAGCCGCTGACCATCATCTCTGAGGATGGAGATTGGTGGACAGTC
CAGTCGGAAGTCTCAGGCAGAGAGTACCACATGCCAGTGTGTATGTGGCTAAAGTCGCCACGGGTGGC
TGTACGAGGGCCTGAGCCGGGAGAAAGCCGAGGAACACTCCTGTACCTGGGAACCCCGAGGGGCCTT
CCTCATCCGGGAGAGCCAGACCAGGAGAGGCTGCTATTCCTGTCCGTCGACTCAGCCGCCTGCATCT
TGGGACCGGATCAGACACTACAGGATACAGCGTCTTGACAATGGCTGGCTGTACATCTCACCTCGCCTCA
CCTTCCCCTCACTCCACGCCTTGGTGGAGCATTACTCTGAGCTAGCAGATGGCATCTGCTGTCCCCTCAG
GGAGCCGTGTGCTCCTGCAGAAGCTTGGGCCACTACCTGGCAAAGATACACCTCCACCTGTGACTGTGCCA
ACATCATCACTAAATTGGAAAAAGCTGGACCGCAGCCTCCTGTTTCTGGAAGCACCTGCGAGTGGGGAGG
CATCTCTGCTCAGTGAGGGGCTCCGAGAGTCCCTCAGTTCCTACATCAGCCTGGCTGAGGACCCCTTGA
TGATGCT

ACGCGTACGCGGCCGCTCGAG - GFP Tag - GTTTAA



[View online »](#)

Protein Sequence: >MG203346 representing NM_029983
 Red=Cloning site Green=Tags(s)

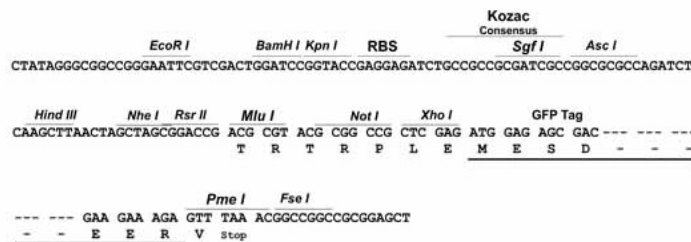
MGSLSSRGKTSPPSPSSSGPDQEPVSMQPERRKVTAVALGSFPAGEQARLSLRLGEPLTIIISEDGDWWTV
 QSEVSGREYHMPSVYVAKVAHGWL YEGLSREKAEELLLLPGNPGGAFLIRESQTRRGCYLSVRLSRPAS
 WDRIRHYRIQRLDNGWLYISPRLTFPSLHALVEHYSELADGICCP LREPCVLQKLGPLPGKDTPPPVTVP
 TSSLNWKKLD RSLLFLEAPASGEASLLSEGLRESLSSYISLAEDPLDDA

TRTRPLE - GFP Tag - V

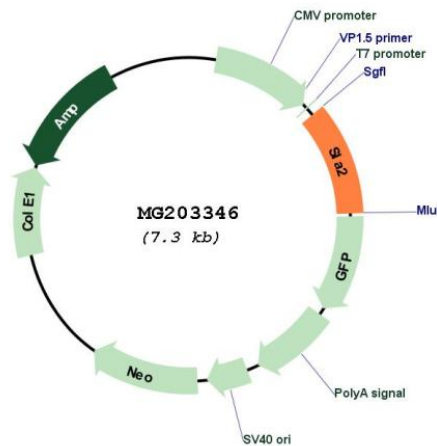
Restriction Sites: SgfI-MluI

Cloning Scheme:

Cloning sites used for ORF Shutting:



Plasmid Map:



ACCN: NM_029983

ORF Size: 777 bp

OTI Disclaimer:	The molecular sequence of this clone aligns with the gene accession number as a point of reference only. However, individual transcript sequences of the same gene can differ through naturally occurring variations (e.g. polymorphisms), each with its own valid existence. This clone is substantially in agreement with the reference, but a complete review of all prevailing variants is recommended prior to use. More info
OTI Annotation:	This clone was engineered to express the complete ORF with an expression tag. Expression varies depending on the nature of the gene.
Components:	The ORF clone is ion-exchange column purified and shipped in a 2D barcoded Matrix tube containing 10ug of transfection-ready, dried plasmid DNA (reconstitute with 100 ul of water).
Reconstitution Method:	<ol style="list-style-type: none">1. Centrifuge at 5,000xg for 5min.2. Carefully open the tube and add 100ul of sterile water to dissolve the DNA.3. Close the tube and incubate for 10 minutes at room temperature.4. Briefly vortex the tube and then do a quick spin (less than 5000xg) to concentrate the liquid at the bottom.5. Store the suspended plasmid at -20°C. The DNA is stable for at least one year from date of shipping when stored at -20°C.
RefSeq:	NM_029983.2 , NP_084259.1
RefSeq Size:	2637 bp
RefSeq ORF:	780 bp
Locus ID:	77799
UniProt ID:	Q8R4L0
Cytogenetics:	2 H1
Gene Summary:	Adapter protein, which negatively regulates T-cell receptor (TCR) signaling. Inhibits T-cell antigen-receptor induced activation of nuclear factor of activated T-cells. May act by linking signaling proteins such as ZAP70 with CBL, leading to a CBL dependent degradation of signaling proteins.[UniProtKB/Swiss-Prot Function]