

Product datasheet for **MG203335**

Frg1 (NM_013522) Mouse Tagged ORF Clone

Product data:

Product Type: Expression Plasmids
Product Name: Frg1 (NM_013522) Mouse Tagged ORF Clone
Tag: TurboGFP
Symbol: Frg1
Mammalian Cell Selection: Neomycin
Vector: pCMV6-AC-GFP (PS100010)
E. coli Selection: Ampicillin (100 ug/mL)
ORF Nucleotide Sequence: >MG203335 representing NM_013522
Red=Cloning site Blue=ORF Green=Tags(s)

TTTTGTAATACGACTCACTATAGGGCGGCCGGAATTCGTCGACTGGATCCGGTACCGAGGAGATCTGCC
GCC**CGATCGCC**

ATGGCCGAATATTCCTATGTAAAGTCCACCAAACCTCGTGCTCAAGGGCACTAAAGCCAAGAGTAAAAAGA
AAAAGAGCAAAGATAAGAAGAGAAAACGGGAAGAAGACGAGGAGACCCAACCTTGATATTGTGGGAATCTG
GTGGACTGTATCCAACCTTGGGGAGATTCAGGAACCTTGGCATTGAAATGGATAAAGGAGCCTATATC
CATGCACTGGACAATGGACTGTTTACACTGGGAGCTCCACACAGAGAAGTTGATGAAGGCCCCAGTCCTC
CAGAGCAGTTTACTGCTGTCAAGTTGTCTGACTCCAGAATTGCCCTGAAGTCTGGCTATGGAAAATATCT
TGGTATAAATTCAGATGGACTTGTGTTGGGCGTTCGGATGCAATTGGGCCAGAGAACAATGGGAACCA
GTGTTTCAAGATGGGAAGATGGCTTTACTGGCCTCAAATAGCTGCTTTATTAGATGTAATGAAGCAGGCG
ATATAGAAGCAAAGAATAAAACGGCAGGAGAAGAAGAAATGATAAAGATCAGATCCTGTGCGGAAAGAGA
AACCAAGAAAAGGATGACATCCCAGAAGAAGACAAGGGAAGTGTGAAGCAGTGTGAAATCAACTATGTA
AAGAAATTTAGAGCTTCCAGGACCACAACTCAAATAAGCAAAGAAGATAGTAAAATTTCTAAAAAGG
CTCGGAAAGATGGATTTTACATGAGACACTTCTGGACAGGAGGCCAAATTGAAAGCTGACCGATACTG
CAAG

ACGCGTACGCGGCCGCTCGAG - GFP Tag - GTTTAA



[View online »](#)

Protein Sequence: >MG203335 representing NM_013522
 Red=Cloning site Green=Tags(s)

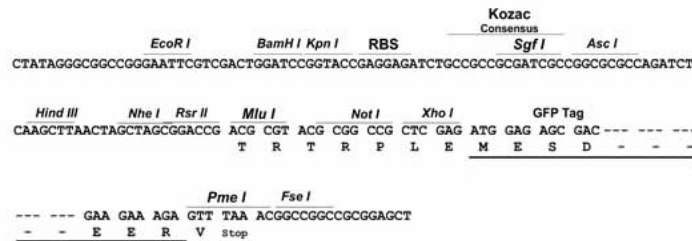
MAEYSYVKSTKLVLKGTAKAKSKKKKSKDKKRKREDEETQLDIVGIWWTVSNFGEISGTIAIEMDKGAYI
 HALDNLGFTLGAPHREVDEGSPPEQFTAVKLSDSRIALKSGYGKYLGINSDGLVVGSRDAIGPREQWEP
 VFQDGMALLASNSCFIRCNEAGDIEAKNKTAGEEEMIKIRSCAERETKKKDDIPEEDKGSVKQCEINYY
 KKFQSFQDHKLKISKEDSKILKKARKDGF LHETLLDRRAK LKADRYCK

TRTRPLE - GFP Tag - V

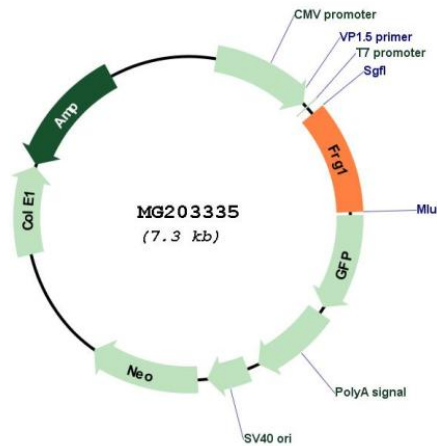
Restriction Sites: SgfI-MluI

Cloning Scheme:

Cloning sites used for ORF Shuttling:



Plasmid Map:



ACCN: NM_013522

ORF Size: 774 bp

OTI Disclaimer:	The molecular sequence of this clone aligns with the gene accession number as a point of reference only. However, individual transcript sequences of the same gene can differ through naturally occurring variations (e.g. polymorphisms), each with its own valid existence. This clone is substantially in agreement with the reference, but a complete review of all prevailing variants is recommended prior to use. More info
OTI Annotation:	This clone was engineered to express the complete ORF with an expression tag. Expression varies depending on the nature of the gene.
Components:	The ORF clone is ion-exchange column purified and shipped in a 2D barcoded Matrix tube containing 10ug of transfection-ready, dried plasmid DNA (reconstitute with 100 ul of water).
Reconstitution Method:	<ol style="list-style-type: none">1. Centrifuge at 5,000xg for 5min.2. Carefully open the tube and add 100ul of sterile water to dissolve the DNA.3. Close the tube and incubate for 10 minutes at room temperature.4. Briefly vortex the tube and then do a quick spin (less than 5000xg) to concentrate the liquid at the bottom.5. Store the suspended plasmid at -20°C. The DNA is stable for at least one year from date of shipping when stored at -20°C.
RefSeq:	NM_013522.2
RefSeq Size:	1022 bp
RefSeq ORF:	777 bp
Locus ID:	14300
UniProt ID:	P97376
Cytogenetics:	8 23.89 cM
Gene Summary:	Binds to mRNA in a sequence-independent manner. May play a role in regulation of pre-mRNA splicing or in the assembly of rRNA into ribosomal subunits. May be involved in mRNA transport. May be involved in epigenetic regulation of muscle differentiation through regulation of activity of the histone-lysine N-methyltransferase KMT5B.[UniProtKB/Swiss-Prot Function]