

Product datasheet for **MG203332**

Isg2012 (BC098326) Mouse Tagged ORF Clone

Product data:

Product Type: Expression Plasmids
Product Name: Isg2012 (BC098326) Mouse Tagged ORF Clone
Tag: TurboGFP
Symbol: Isg2012
Synonyms: 4930429N24; C80587
Mammalian Cell Selection: Neomycin
Vector: pCMV6-AC-GFP (PS100010)
E. coli Selection: Ampicillin (100 ug/mL)
ORF Nucleotide Sequence: >MG203332 representing BC098326
 Red=Cloning site Blue=ORF Green=Tags(s)

TTTTGTAATACGACTCACTATAGGGCGGCCGGAATTCGTCGACTGGATCCGGTACCGAGGAGATCTGCC
 GCC**CGATCGCC**

ATGTCTACCATACTCCTGAATTTAGACTTTGGGCAACCTTCGAAAAGGCATTTGGAGGAAATGCCAAAC
 ATCAACGCTTTGTCAAGAAGCGAAGGTTCTTGGAACAGAAAGGATTTCTGAATAAAAAGAACCAACCCCC
 TAACAAGGTGTCTAAGTTGAACCTCAGAACCTCAAAGAAAGGGGAACTTCAAGAGTAGATGGCATTGTTG
 AAGATCCTTCCATGCCCAAAGAAGAAAGAGGCAGCTGCCTCAAAGAGGGACTCAGAGCAGTCCAAAGACA
 AGAAAGCACCATTGTCTTGGCTGACCCCTGCTCCTTCAAAGAAGACTGCTTCTGTTGTGTCTAAAATAGA
 TTTGCTAGGGGAGTTTCAGAGTGCCTTCAAAGACTAAGAGCACCCAGAAGAAGGGCTCCAAGAAGAAG
 TCCTTGAAAAAGAAAATTGCTACAGAGAACTCCACCCAAGCTCAGTCAAAGGATAAAGGCTCCAAGAAGA
 AGCCCTTGAAAGAAAAATGCTGTACCGAACTCCACCCAAGCTCGTTCTGAAGATAAGTGCCCTACAGTCCC
 CCAAACCTTGCCAGGGAAGATGGTGGCAATAGACTGTGAAATGGTGGGCACAGGACCCAAGGGACGCGTT
 AGTTCCCTGGCTCGATGCAGCATTGTAATTACAATGGTATGTGCTGTACGATGAGTACGTCTCCCCC
 CCTGCTACATCGTCAACTACCGGACCAGATGGAGTGGTATCCGGGAAGTGTCTCTGGTGAGGGACTTGGG
 A

AGCGGACCGACGCGTACGCGGCCGCTCGAG - GFP Tag - GTTTAA



[View online »](#)

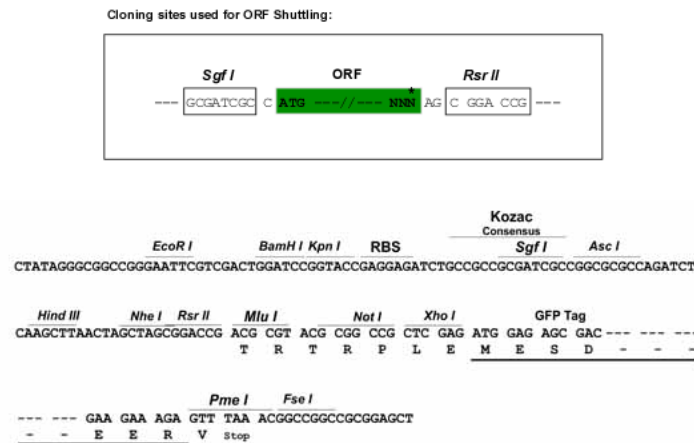
Protein Sequence: >MG203332 representing BC098326
 Red=Cloning site Green=Tags(s)

MSTILLNLDFGQPSKKAFFGGNAKHQRVFKRRFLEQKGF LNKKNPKNVSKLNSEPPKKGETSRVDGIL
 KILPCPKKKEAAAASKRDSEQSKDKKAPLSWLTPAPSKKTASVVSIDLLGEFQSALPKTKSTQKKGSKKK
 SLKKKIATENSTQAQSKDKGSKKKPLKKNVNPSTQARSEDKCPVTPQNLPGKMVAIDCEMVGTGPKGRV
 SSLARCSIVNYNGDVLVYDEYVLPACYIVNYRTRWSGIREVSLVRDLG

SGPTRRRLE - GFP Tag - V

Restriction Sites: SgfI-RsrII

Cloning Scheme:



ACCN: BC098326

ORF Size: 773 bp

OTI Disclaimer: The molecular sequence of this clone aligns with the gene accession number as a point of reference only. However, individual transcript sequences of the same gene can differ through naturally occurring variations (e.g. polymorphisms), each with its own valid existence. This clone is substantially in agreement with the reference, but a complete review of all prevailing variants is recommended prior to use. [More info](#)

OTI Annotation: This clone was engineered to express the complete ORF with an expression tag. Expression varies depending on the nature of the gene.

Components: The ORF clone is ion-exchange column purified and shipped in a 2D barcoded Matrix tube containing 10ug of transfection-ready, dried plasmid DNA (reconstitute with 100 ul of water).

Reconstitution Method:

1. Centrifuge at 5,000xg for 5min.
2. Carefully open the tube and add 100ul of sterile water to dissolve the DNA.
3. Close the tube and incubate for 10 minutes at room temperature.
4. Briefly vortex the tube and then do a quick spin (less than 5000xg) to concentrate the liquid at the bottom.
5. Store the suspended plasmid at -20°C. The DNA is stable for at least one year from date of shipping when stored at -20°C.

RefSeq: [BC098326](#), [AAH98326](#)

RefSeq Size: 2902 bp

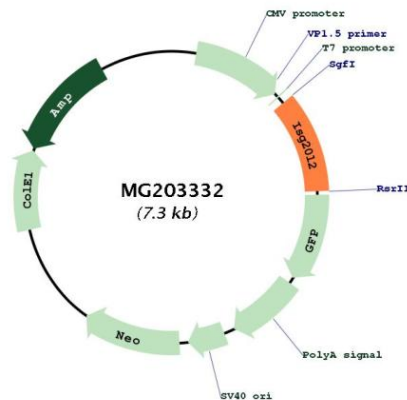
RefSeq ORF: 773 bp

Locus ID: 229504

Cytogenetics: 3 F1

Gene Summary: 3'-> 5'-exoribonuclease involved in ribosome biogenesis in the processing of the 12S pre-rRNA. Displays a strong specificity for a 3'-end containing a free hydroxyl group. [UniProtKB/Swiss-Prot Function]

Product images:



Circular map for MG203332