

Product datasheet for **MG203323**

Tmem101 (NM_029649) Mouse Tagged ORF Clone

Product data:

Product Type: Expression Plasmids
Product Name: Tmem101 (NM_029649) Mouse Tagged ORF Clone
Tag: TurboGFP
Symbol: Tmem101
Synonyms: 2610511E22Rik
Mammalian Cell Selection: Neomycin
Vector: pCMV6-AC-GFP (PS100010)
E. coli Selection: Ampicillin (100 ug/mL)
ORF Nucleotide Sequence: >MG203323 representing NM_029649
 Red=Cloning site Blue=ORF Green=Tags(s)

TTTTGTAATACGACTCACTATAGGGCGCCGGGAATTCGTCGACTGGATCCGGTACCGAGGAGATCTGCC
 GCC**CGATCGCC**

ATGGCTTCGAAGATTGGATCGAGACGCTGGATGCTGCAGCTGATCATGCAGCTGGGTTCCGTGCTGCTCA
 CGCGCTGCCCTTTTGGGGCTGCTTCAGCCAACCTATGTTGTACGCTGAAAGGGCCGAGGCGCGCCGGAA
 GCCCGACATCCCAGTGCCTTATCTATATTCGACATGGGGCAGCTGTGTGTGCTAGCTTCATGTCC
 TTCGGAGTGAAGCGCGTTGGTTTGCCTGGGGCCCGCTGCAGCTAGCCATCAGCACCTACACCGCTT
 ACATCGGGGGCTATGTCCACTACGGGACTGGCTAAAGGTCCGTATGTATTCTCGCACAGTTGCCATCAT
 TGGCGGCTTTCTGGTGTGGCCAGTGGGGCTGGAGAGCTGTACCGTCGAAAGCCCGAAGCCGTTCCCTG
 CAGTCCACTGGCCAAGTGTTCCTGGGCATCTACCTCATTGTGTGGCCTACTCGCTGCAGCACAGCAAGG
 AGGACCGGCTGGCGTACCTGAACCATCTCCAGGAGGGGAGCTGATGGTCCAGCTGTTCTTCGTGCTTTA
 TGGGGTCTGGCCCTGGCCTTCTGTGGGTTACTATGTGACGCTGGCCGCCAGATCCTGGCCGTGTTG
 TTACCTCCTGTATGCTGCTTATCGACGGCAACGTCTCCTATTGGCACAACACACGACGCGTCGAGTTCT
 GGAACCAGATGAAGCTACTCGGCGAGAGTGTGGGCATCTTTGGGGCTGCCGTCATCTTGGCTACTGATGG
 C

AG**CGGACCG**ACGCGTACGCGCCGCTCGAG - GFP Tag - GTTTAA



[View online »](#)

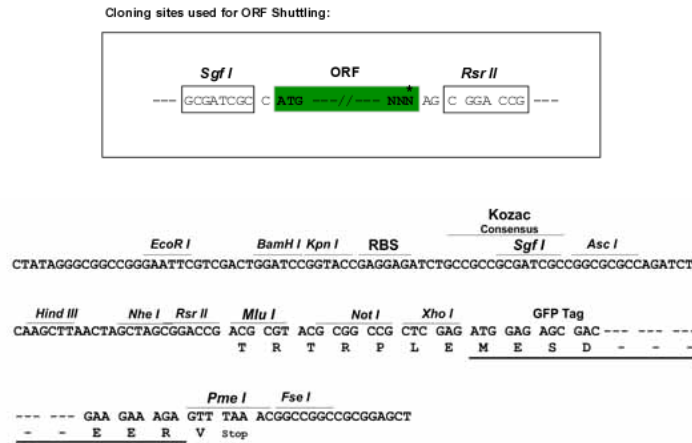
Protein Sequence: >MG203323 representing NM_029649
Red=Cloning site Green=Tags(s)

MASKIGSRRWMLQLIMQLGSVLLTRCPFWGCFSQLMLYAERAEARRKPDIPVPYLYFDMGAAVLCASFMS
 FGVKRRWFALGAALQLAISTYTAYIGGYVHYGDWLKVRMYSRTVAIIGGFLVLASGAGELYRRKPRSRSL
 QSTGQVFLGIYLCVAYSLQHSKEDRLAYLNHLPGGELMVQLFFVLYGVLALAFLSGYYVTLAAQILAVL
 LPPVMLLIDGNVSYWHNTRRVEFWNQMKLLGESVGIFFGAAVILATDG

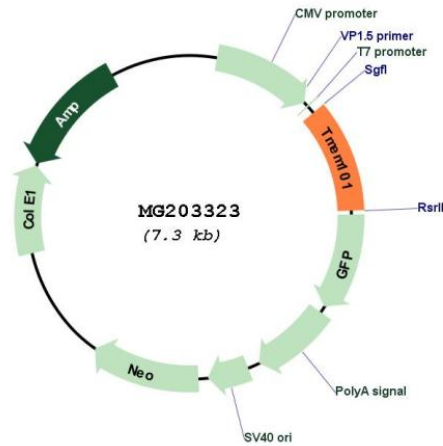
SGPTRRRLE - GFP Tag - V

Restriction Sites: SgfI-RsrII

Cloning Scheme:



Plasmid Map:



ACCN: NM_029649

ORF Size: 771 bp

OTI Disclaimer:	The molecular sequence of this clone aligns with the gene accession number as a point of reference only. However, individual transcript sequences of the same gene can differ through naturally occurring variations (e.g. polymorphisms), each with its own valid existence. This clone is substantially in agreement with the reference, but a complete review of all prevailing variants is recommended prior to use. More info
OTI Annotation:	This clone was engineered to express the complete ORF with an expression tag. Expression varies depending on the nature of the gene.
Components:	The ORF clone is ion-exchange column purified and shipped in a 2D barcoded Matrix tube containing 10ug of transfection-ready, dried plasmid DNA (reconstitute with 100 ul of water).
Reconstitution Method:	<ol style="list-style-type: none">1. Centrifuge at 5,000xg for 5min.2. Carefully open the tube and add 100ul of sterile water to dissolve the DNA.3. Close the tube and incubate for 10 minutes at room temperature.4. Briefly vortex the tube and then do a quick spin (less than 5000xg) to concentrate the liquid at the bottom.5. Store the suspended plasmid at -20°C. The DNA is stable for at least one year from date of shipping when stored at -20°C.
RefSeq:	NM_029649.2 , NP_083925.2
RefSeq Size:	1528 bp
RefSeq ORF:	774 bp
Locus ID:	76547
UniProt ID:	Q91VP7
Cytogenetics:	11 D
Gene Summary:	May activate NF-kappa-B signaling pathways.[UniProtKB/Swiss-Prot Function]