

## Product datasheet for **MG203312**

### Rpl8 (BC043017) Mouse Tagged ORF Clone

#### Product data:

Product Type:	Expression Plasmids
Product Name:	Rpl8 (BC043017) Mouse Tagged ORF Clone
Tag:	TurboGFP
Symbol:	Rpl8
Mammalian Cell Selection:	Neomycin
Vector:	pCMV6-AC-GFP (PS100010)
E. coli Selection:	Ampicillin (100 ug/mL)
ORF Nucleotide Sequence:	>MG203312 representing BC043017 Red=Cloning site Blue=ORF Green=Tags(s)

TTTTGTAATACGACTCACTATAGGGCGGCCGGAATTCGTCGACTGGATCCGGTACCGAGGAGATCTGCC  
GCC**CGATCGCC**

ATGGGCCGTGTGATCCGAGGGCAGAGGAAAGGCGGGTTCTGTTTTCCGTGCGCACGTGAAGCACCGTA  
AGGGCGCCGCGCCTACGTGCTGTGGACTTCGCGGAGCGACACGGCTACATTAAGGCATCGTAAAGGA  
CATCATTATGACCCCTGGCCGCGCGCTCCCCTCGCAAAGTCGTCTTCGGGATCCCTACCGATTCAAG  
AAGCGGACAGAGCTGTTTCATCGCAGCGGAGGGGATCCACACTGGACAGTTCGTGTACTGCGGCAAGAAGG  
CCCAGCTGAATATCGGCAATGTTTTGCCGTGGGCACCATGCCTGAGGGTACGATCGTGTGTTGTCTGGA  
GGAGAAACCTGGGGACAGGGCAAGCTGGCCCGAGCCTCCGGGAACTACGCCACAGTCATCTCCACAAC  
CCAGAGACCAAGAAGACTCGAGTGAAGCTGCCTTCGGGGTCCAAGAAGGTCATTTCTCTGCCAACAGAG  
CCGTTGTTGGTGTGTGGCTGGTGGGGCAGAATTGACAAGCCTATCTTAAAGGCTGGCCGTGCCTACCA  
CAAGTACAAGGCAAGAGGAAGTCTGGCCACGTGTGCGGGTGTGGCCATGAATCCTGTGGAGCATCCC  
TTTGGAGGTGTTAACCACCAGCACATTGGCAAACCCTCCACCATCCGAAGAGATGCCCTGCTGGGCGCA  
AAGTGGGTCTCATTGCTGCCCGCGACTGGACGGCTGCGTGAACCAAACTGTACAGGAGAAGGAGAA  
C

**ACGCGT**ACGCGGCCGCTCGAG - GFP Tag - GTTTAA



[View online »](#)

Protein Sequence: >MG203312 representing BC043017  
 Red=Cloning site Green=Tags(s)

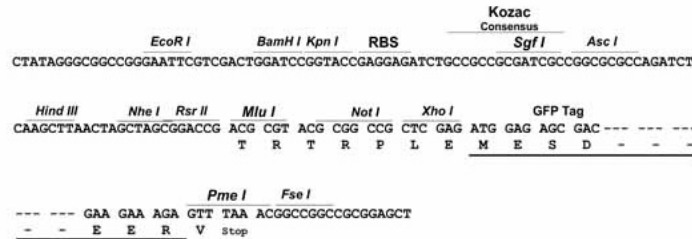
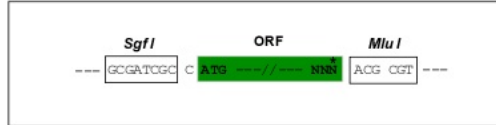
MGRVIRGQRKAGSVFRAHVKHKRGAARLRAVDFAERHGYIKGIVKDIHDPGRGAPLAKVVFRDPYRFK  
 KRTELFIAAEGIHTGQFVYCGKKAQLNIGNVLPVGTMPGEGTIVCCLEEKPGDRGKLARASGNYATVISHN  
 PETKKTRVKLPSGSKKVISSANRAVVGVVAGGGRIDKPKILKAGRAYHKYKAKRNCWPRVRGVMNPVEHP  
 FGGGNHQHIGKPKSTIRRDAPAGRKVGLIAARRTGRLRGTKTVQEKEN

TRTRPLE - GFP Tag - V

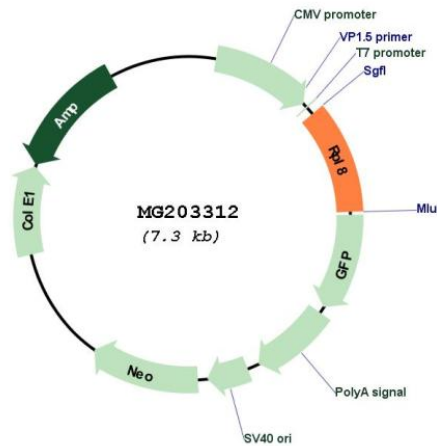
Restriction Sites: SgfI-MluI

Cloning Scheme:

Cloning sites used for ORF Shuttling:



Plasmid Map:



ACCN: BC043017

ORF Size: 773 bp

<b>OTI Disclaimer:</b>	The molecular sequence of this clone aligns with the gene accession number as a point of reference only. However, individual transcript sequences of the same gene can differ through naturally occurring variations (e.g. polymorphisms), each with its own valid existence. This clone is substantially in agreement with the reference, but a complete review of all prevailing variants is recommended prior to use. <a href="#">More info</a>
<b>OTI Annotation:</b>	This clone was engineered to express the complete ORF with an expression tag. Expression varies depending on the nature of the gene.
<b>Components:</b>	The ORF clone is ion-exchange column purified and shipped in a 2D barcoded Matrix tube containing 10ug of transfection-ready, dried plasmid DNA (reconstitute with 100 ul of water).
<b>Reconstitution Method:</b>	<ol style="list-style-type: none"><li>1. Centrifuge at 5,000xg for 5min.</li><li>2. Carefully open the tube and add 100ul of sterile water to dissolve the DNA.</li><li>3. Close the tube and incubate for 10 minutes at room temperature.</li><li>4. Briefly vortex the tube and then do a quick spin (less than 5000xg) to concentrate the liquid at the bottom.</li><li>5. Store the suspended plasmid at -20°C. The DNA is stable for at least one year from date of shipping when stored at -20°C.</li></ol>
<b>RefSeq:</b>	<a href="#">BC043017</a> , <a href="#">AAH43017</a>
<b>RefSeq Size:</b>	861 bp
<b>RefSeq ORF:</b>	773 bp
<b>Locus ID:</b>	26961
<b>Cytogenetics:</b>	15 D3
<b>Gene Summary:</b>	Component of the large ribosomal subunit.[UniProtKB/Swiss-Prot Function]