

Product datasheet for **MG203308**

Reep4 (NM_180588) Mouse Tagged ORF Clone

Product data:

Product Type:	Expression Plasmids
Product Name:	Reep4 (NM_180588) Mouse Tagged ORF Clone
Tag:	TurboGFP
Symbol:	Reep4
Synonyms:	2700029E10Rik
Mammalian Cell Selection:	Neomycin
Vector:	pCMV6-AC-GFP (PS100010)
E. coli Selection:	Ampicillin (100 ug/mL)
ORF Nucleotide Sequence:	>MG203308 representing NM_180588 Red=Cloning site Blue=ORF Green=Tags(s)

TTTTGTAATACGACTCACTATAGGGCGGCCGGAATTCGTCGACTGGATCCGGTACCGAGGAGATCTGCC
GCC**CGATCGCC**

ATGGTGCCTGGATGATCTGTGCCTGGTAGTGCTCATATTTGGCATGCTGTATCCTGCGTATGCTTCT
ACAAGGCCGTGAAGAGCAAGAACATTCGAGAATATGTACGGTGGATGATGATTGGATTGCTTTGCGAT
CTTCATGGCAGCAGAAACCTTCACAGACATCTTCATTTCTGGTCCCGTTTTATTACGAGTTCAAGATG
GCTTTTGTGCTGTGGCTGCTCTCACCTTACACCAAGGGGCCAGCCTGCTTACCAGAAAGTTGTCCACC
CATCCCTATCCCGCCATGAGAAGGAGATCGACCGTGTATCGTGCAGGCAAAGGAGCGCAGCTATGAAAC
CATGCTCAGTTTTGGGAAGCGGAGCCTCAACATCGCTGCCTCAGCTGCTGTGCAGGCTGCTACCAAGAGT
CAAGGCGCTCTAGCTGGAAGGCTGCGGAGTTTCTCTATGCAAGACCTGCGCTCTATCCCTGACACCCCTG
TCCCCACCTACCAAGATCCCCTCTACCTGGAAGACCAGGTACCCCGACGTAGACCCCTATTGGATACCG
GCCAGGCGGCTGCAGGGCAGTGACACAGAGGATGAGTGTGGTCAAGACAATGAGATCGTCCCCAGCCA
CCTGTTCCGGCCCCGAGAGAAGCCTTAGGCCGAGCCAGACCTTCGGTGGTCAAGAGGAAGCCATTGA
CTCGAGAGGGCACCTCACGCTCCCTGAAGGTCCGAACCCGGAAAAAGGCCATGCCTCAGACATGGACAG
C

AGCGGACCGACGCGTACGCGGCCGCTCGAG - GFP Tag - GTTTAA



[View online »](#)

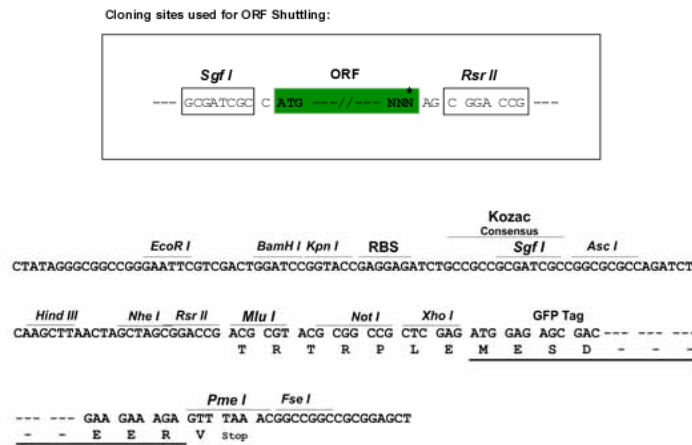
Protein Sequence: >MG203308 representing NM_180588
Red=Cloning site Green=Tags(s)

MVSWMICRLVVLIFGMLYPAYASYKAVKSKNIREYVRWMMYWIVFAIFMAAETFTDIFISWFPFYEFKM
 AFVLWLLSPYTKGASLLYRK FVHPSLSRHEKEIDACIVQAKERSYETMLSFGKRSLNIAASA AVQAATKS
 QGALAGRLRSFSMQDLRSIPDTPVPTYQDPLYLEDQVPRRRPPIGYRPGGLQGS DTEDECWSDNEI VPQP
 PVRPREKPLGRSQSLRVV KRKPLTREGTSRSLKVRTRKKAMP SDMDS

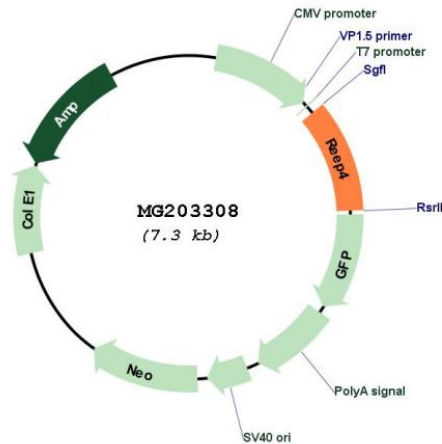
SGPTRRRLE - GFP Tag - V

Restriction Sites: SgfI-RsrII

Cloning Scheme:



Plasmid Map:



ACCN: NM_180588

ORF Size: 771 bp

OTI Disclaimer:	The molecular sequence of this clone aligns with the gene accession number as a point of reference only. However, individual transcript sequences of the same gene can differ through naturally occurring variations (e.g. polymorphisms), each with its own valid existence. This clone is substantially in agreement with the reference, but a complete review of all prevailing variants is recommended prior to use. More info
OTI Annotation:	This clone was engineered to express the complete ORF with an expression tag. Expression varies depending on the nature of the gene.
Components:	The ORF clone is ion-exchange column purified and shipped in a 2D barcoded Matrix tube containing 10ug of transfection-ready, dried plasmid DNA (reconstitute with 100 ul of water).
Reconstitution Method:	<ol style="list-style-type: none">1. Centrifuge at 5,000xg for 5min.2. Carefully open the tube and add 100ul of sterile water to dissolve the DNA.3. Close the tube and incubate for 10 minutes at room temperature.4. Briefly vortex the tube and then do a quick spin (less than 5000xg) to concentrate the liquid at the bottom.5. Store the suspended plasmid at -20°C. The DNA is stable for at least one year from date of shipping when stored at -20°C.
RefSeq:	NM_180588.2
RefSeq Size:	1323 bp
RefSeq ORF:	774 bp
Locus ID:	72549
UniProt ID:	Q8K072
Cytogenetics:	14 D2
Gene Summary:	Microtubule-binding protein required to ensure proper cell division and nuclear envelope reassembly by sequestering the endoplasmic reticulum away from chromosomes during mitosis. Probably acts by clearing the endoplasmic reticulum membrane from metaphase chromosomes (By similarity).[UniProtKB/Swiss-Prot Function]