

## Product datasheet for **MG203289**

### H2-Aa (NM\_010378) Mouse Tagged ORF Clone

#### Product data:

Product Type:	Expression Plasmids
Product Name:	H2-Aa (NM_010378) Mouse Tagged ORF Clone
Tag:	TurboGFP
Symbol:	H2-Aa
Synonyms:	Aalpha; H-2Aa; H2Aa; I-Aalpha; Ia-1; Ia1; IAalpha
Mammalian Cell Selection:	Neomycin
Vector:	pCMV6-AC-GFP (PS100010)
E. coli Selection:	Ampicillin (100 ug/mL)
ORF Nucleotide Sequence:	>MG203289 representing NM_010378 Red=Cloning site Blue=ORF Green=Tags(s)

TTTTGTAATACGACTCACTATAGGGCGCCGGGAATTCGTCGACTGGATCCGGTACCGAGGAGATCTGCC  
GCC**CGATCGCC**

ATGCCGCGCAGCAGAGCTCTGATTCTGGGGTCTCGCCCTGACCACCATGCTCAGCCTCTGTGGAGGTG  
AAGACGACATTGAGGCCGACCACGTAGGCACCTATGGTATAAGTGTATATCAGTCTCCTGGAGACATTGG  
CCAGTACACATTTGAATTTGATGGTGATGAGTTGTTCTATGTGGACTGGATAAGAAGGAGACTGTCTGG  
ATGCTTCCTGAGTTTGGCCAATTGGCAAGCTTTGACCCCAAGGTGGACTGCAAAACATAGCTGTAGTAA  
AACACAACCTGGGAGTCTTGACTAAGAGGTCAAATTCACCCAGCTACCAATGAGGCTCCTCAAGCGAC  
TGTGTTCCCAAGTCCCCTGTGCTGCTGGGTGAGCCCAACCCCTCATCTGCTTTGTGGACAACATCTTC  
CCTCCTGTGATCAACATCACATGGCTCAGAAATAGCAAGTCAGTCGACGACGGTGTATGAGACCAAGCT  
TCTTCGTAACCGTGACTATTCCTTCCACAAGCTGTCTTATCTCACCTTCATCCCTTCTGACGATGACAT  
TTATGACTGCAAGGTGGAACACTGGGGCTGGAGGAGCCGTTCTGAAACACTGGGAACCTGAGATTCCA  
GCCCCATGTGAGAGCTGACAGAGACTGTGGTCTGTGCCCTGGGGTTGTCTGTGGCCTTGTGGGATCG  
TGGTGGGCACCATCTTCATTCATCAAGGCTGCGATCAGGTGGCACCTCCAGACACCCAGGGCCTTTA

**ACGCGT**ACGCGGCCGCTCGAG - GFP Tag - GTTTAA



[View online »](#)

**Protein Sequence:** >MG203289 representing NM\_010378  
 Red=Cloning site Green=Tags(s)

MPRSRALILGVLALTTMLSLCGGEDDIEADHVGTYGISVYQSPGDIGQYTFEFDGDELFYVDLDDKKEVW  
 MLPEFGQLASFDPPQGLQNIHAVVKHNLGVLTKRSNSTPATNEAPQATVFPKSPVLLGQPNTLICFVDNIF  
 PPVINITWLRNSKSVADGVYETSFFVNRDYSFHKL SYLTFIPSDDDIYDCKVEHWGLEEPLVKHWEPEIP  
 APMSELTETVVCALGLSVGLVGI VVG TIF I IQGLRSGGTSRHPGPL

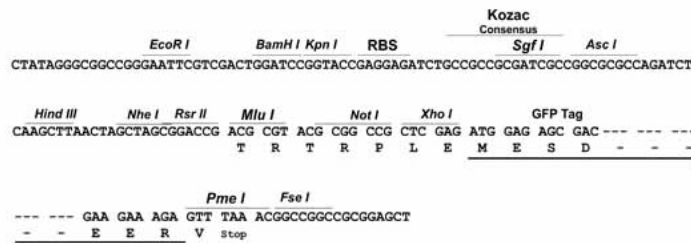
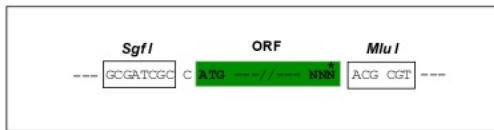
TRTRPLE - GFP Tag - V

**Chromatograms:** [https://cdn.origene.com/chromatograms/ja2314\\_e12.zip](https://cdn.origene.com/chromatograms/ja2314_e12.zip)

**Restriction Sites:** SgfI-MluI

**Cloning Scheme:**

Cloning sites used for ORF Shutting:



**ACCN:** NM\_010378

**ORF Size:** 768 bp

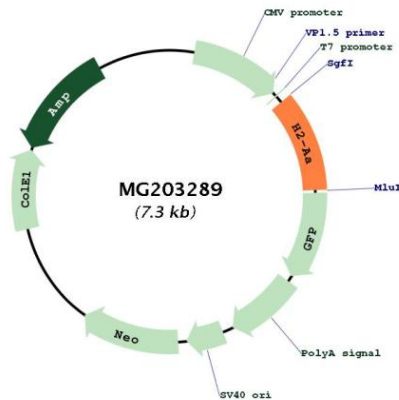
**OTI Disclaimer:** Due to the inherent nature of this plasmid, standard methods to replicate additional amounts of DNA in E. coli are highly likely to result in mutations and/or rearrangements. Therefore, OriGene does not guarantee the capability to replicate this plasmid DNA. Additional amounts of DNA can be purchased from OriGene with batch-specific, full-sequence verification at a reduced cost. Please contact our customer care team at [custsupport@origene.com](mailto:custsupport@origene.com) or by calling 301.340.3188 option 3 for pricing and delivery.

The molecular sequence of this clone aligns with the gene accession number as a point of reference only. However, individual transcript sequences of the same gene can differ through naturally occurring variations (e.g. polymorphisms), each with its own valid existence. This clone is substantially in agreement with the reference, but a complete review of all prevailing variants is recommended prior to use. [More info](#)

**OTI Annotation:** This clone was engineered to express the complete ORF with an expression tag. Expression varies depending on the nature of the gene.

- Components:** The ORF clone is ion-exchange column purified and shipped in a 2D barcoded Matrix tube containing 10ug of transfection-ready, dried plasmid DNA (reconstitute with 100 ul of water).
- Reconstitution Method:**
1. Centrifuge at 5,000xg for 5min.
  2. Carefully open the tube and add 100ul of sterile water to dissolve the DNA.
  3. Close the tube and incubate for 10 minutes at room temperature.
  4. Briefly vortex the tube and then do a quick spin (less than 5000xg) to concentrate the liquid at the bottom.
  5. Store the suspended plasmid at -20°C. The DNA is stable for at least one year from date of shipping when stored at -20°C.
- Note:** Plasmids are not sterile. For experiments where strict sterility is required, filtration with 0.22um filter is required.
- RefSeq:** [NM\\_010378.3](#)
- RefSeq Size:** 1084 bp
- RefSeq ORF:** 771 bp
- Locus ID:** 14960
- UniProt ID:** [P14434](#)
- Cytogenetics:** 17 17.98 cM

**Product images:**



Circular map for MG203289