

Product datasheet for **MG203277**

Tgfb2 (BC011055) Mouse Tagged ORF Clone

Product data:

Product Type:	Expression Plasmids
Product Name:	Tgfb2 (BC011055) Mouse Tagged ORF Clone
Tag:	TurboGFP
Symbol:	Tgfb2
Synonyms:	BB105277; Tgf-beta2; Tgfb-2
Mammalian Cell Selection:	Neomycin
Vector:	pCMV6-AC-GFP (PS100010)
E. coli Selection:	Ampicillin (100 ug/mL)
ORF Nucleotide Sequence:	>MG203277 representing BC011055 Red=Cloning site Blue=ORF Green=Tags(s)

TTTTGTAATACGACTCACTATAGGGCGCCGGGAATTCGTCGACTGGATCCGGTACCGAGGAGATCTGCC
GCC**CGATCGCC**

ATGTTTCAGAGTGGAGGAGGCCACACATGTGCAGATCCTTAAATCCAAAGACTTAACATCTCCCACCCAGC
GCTACATCGATAGCAAGTTGTGAAAACAGAGCGGAGGGTGAATGGCTCTCCTTCGACGTGACAGACGC
TGTGCAGGAGTGGCTTACCACAAAGACAGGAACCTGGGGTTTAAATAAGTTTACTGCCCTGCTGT
ACCTTCGTGCCGTCTAATAATTACATCATCCGAATAAAAGCGAAGAGCTCGAGGCGAGATTTGCAGGTA
TTGATGGCACCTCTACATATGCCAGTGGTATCAGAAAATAAAAGTCCACTAGGAAAAAACAGTGG
GAAGACCCACATCTCCTGCTAATGTTGTTGCCCTCCTACAGACTGGAGTCAACAGTCCAGCCGGCGG
AAGAAGCGCGCTTTGGATGCTGCCTACTGCTTTAGAAATGTGCAGGATAATTGCTGCCTTCGCCCTTT
ACATTGATTTTAAAGGGATCTTGGATGGAAATGGATCCATGAACCCAAAGGGTACAATGCTAATTCTG
TGCTGGGGCATGCCATATCTATGGAGTTCAGACACTCAACACACCAAAGTCCAGCCTGTACAACACC
ATAAATCCCGAAGCTTCCGCTTCCCCTTGCTGTGTGCCAGGATCTGGAACCACTGACCATTCTTATT
ACATTGAAATACGCCAAGATCGAACAGCTTTCCAATATGATTGTCAAGTCTTGTAAATGCAGC

ACGCGTACGCGGCCGCTCGAG - GFP Tag - GTTTAA



[View online »](#)

Protein Sequence: >MG203277 representing BC011055
Red=Cloning site Green=Tags(s)

MFRVEEATHVQILKSKDLTSPTRQYIDSKVVKTRAEGEWLSFDVTDVAVQEWLHHKDRNLGFKISLHCPCC
 TFVPSNNYIIPNKSEELARFAGIDGTSTYASGDQKTIKSTRKKTSGKTPHLLMLLPSYRLESQQSSRR
 KKRALDAAAYCFRNVQDNCLRLPYIDFKRDLGWKWIHEPKGYNANFCAGACPYLWSSDTQHTKVLSTYNT
 INPEASASPCCVSQDLEPLTILYYIGNTPKIEQLSNMIVKSKCS

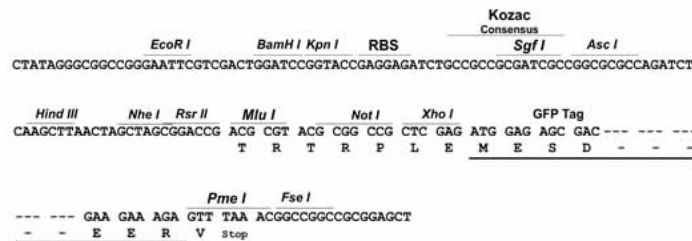
TRTRPLE - GFP Tag - V

Chromatograms: https://cdn.origene.com/chromatograms/ja2355_f04.zip

Restriction Sites: SgfI-MluI

Cloning Scheme:

Cloning sites used for ORF Shutting:



ACCN: BC011055

ORF Size: 765 bp

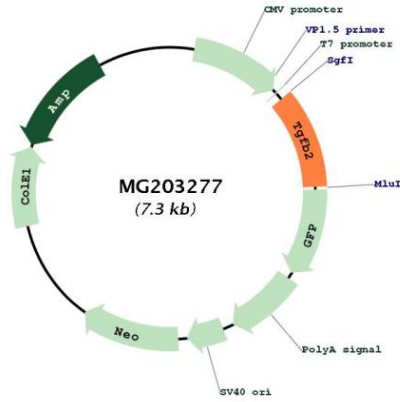
OTI Disclaimer: Due to the inherent nature of this plasmid, standard methods to replicate additional amounts of DNA in E. coli are highly likely to result in mutations and/or rearrangements. Therefore, OriGene does not guarantee the capability to replicate this plasmid DNA. Additional amounts of DNA can be purchased from OriGene with batch-specific, full-sequence verification at a reduced cost. Please contact our customer care team at custsupport@origene.com or by calling 301.340.3188 option 3 for pricing and delivery.

The molecular sequence of this clone aligns with the gene accession number as a point of reference only. However, individual transcript sequences of the same gene can differ through naturally occurring variations (e.g. polymorphisms), each with its own valid existence. This clone is substantially in agreement with the reference, but a complete review of all prevailing variants is recommended prior to use. [More info](#)

OTI Annotation: This clone was engineered to express the complete ORF with an expression tag. Expression varies depending on the nature of the gene.

Components:	The ORF clone is ion-exchange column purified and shipped in a 2D barcoded Matrix tube containing 10ug of transfection-ready, dried plasmid DNA (reconstitute with 100 ul of water).
Reconstitution Method:	<ol style="list-style-type: none">1. Centrifuge at 5,000xg for 5min.2. Carefully open the tube and add 100ul of sterile water to dissolve the DNA.3. Close the tube and incubate for 10 minutes at room temperature.4. Briefly vortex the tube and then do a quick spin (less than 5000xg) to concentrate the liquid at the bottom.5. Store the suspended plasmid at -20°C. The DNA is stable for at least one year from date of shipping when stored at -20°C.
Note:	Plasmids are not sterile. For experiments where strict sterility is required, filtration with 0.22um filter is required.
RefSeq:	BC011055 , AAH11055
RefSeq Size:	2047 bp
RefSeq ORF:	767 bp
Locus ID:	21808
Cytogenetics:	1 89.95 cM
Gene Summary:	<p>This gene encodes a secreted ligand of the TGF-beta (transforming growth factor-beta) superfamily of proteins. Ligands of this family bind various TGF-beta receptors leading to recruitment and activation of SMAD family transcription factors that regulate gene expression. The encoded preproprotein is proteolytically processed to generate a latency-associated peptide (LAP) and a mature peptide, and is found in either a latent form composed of a mature peptide homodimer, a LAP homodimer, and a latent TGF-beta binding protein, or in an active form consisting solely of the mature peptide homodimer. The mature peptide may also form heterodimers with other TGF-beta family members. Mice lacking a functional copy of this gene display developmental defects in multiple organs and perinatal lethality. Heterozygous mutant mice exhibit aortic root aneurysm. This gene encodes multiple isoforms that may undergo similar proteolytic processing. [provided by RefSeq, Aug 2016]</p>

Product images:



Circular map for MG203277