

## Product datasheet for **MG203275**

### **Dlx1 (NM\_010053) Mouse Tagged ORF Clone**

#### Product data:

**Product Type:** Expression Plasmids  
**Product Name:** Dlx1 (NM\_010053) Mouse Tagged ORF Clone  
**Tag:** TurboGFP  
**Symbol:** Dlx1  
**Synonyms:** Dlx; Dlx-; Dlx-1  
**Mammalian Cell Selection:** Neomycin  
**Vector:** pCMV6-AC-GFP (PS100010)  
**E. coli Selection:** Ampicillin (100 ug/mL)  
**ORF Nucleotide Sequence:** >MG203275 representing NM\_010053  
Red=Cloning site Blue=ORF Green=Tags(s)

TTTTGTAATACGACTCACTATAGGGCGCCGGGAATTCGTCGACTGGATCCGGTACCGAGGAGATCTGCC  
GCC**CGATCGCC**

ATGACCATGACCACCATGCCAGAAAGTCTCAACAGCCCCGTGTCGGGCAAGGCTGTGTTTATGGAGTTTG  
GGCCGCCCAACCAGCAAATGTCTCCTTCTCCCATGTCCACGGGCACTACTCCATGCACTGTTTACACTC  
GGCGGGCCATTCGCAGCCCGACGGTGCCTACAGTTCGGCCTCATCCTTCTCCGACCGCTGGGCTACCCC  
TACGTCAACTCGGTCAGCAGCCACGCGTCCAGCCCTACATCAGTTCGTCAGTCTACCCCGGCAGCG  
CCAGCCTCGCCAGAGCCGCCTGGAGGACCCAGGGCGGACTCCGAGAAGAGTACGGTGGTGAAGGCGG  
CGAGGTGCGCTTTAACGGCAAAGGGAAAAAGATCCGTAACCCAGGACAATTTATCCAGTTTGAGTTG  
CAGGCTTTGAACCGGAGGTTCCAACAACTCAGTACTTAGCTCTGCCTGAGAGGGCGGAGCTGGCGGCT  
CCTTGGGACTCACACAGACGCAGGTCAAGATATGGTTCCAGAACAACGCTCCAAGTTCAAGAAGCTGAT  
GAAGCAAGGCGGGGACGCTCTGGAGGGCAGCGCTGGCGAACGGCAGAGCCTTGTCTGCCGGCTCCCCA  
CCGGTACCACCCGGTGGAAATCCGAACTCCTCATCTGGGAAGGGCTCCGGCAGCAGCGCTGGCTCCTACG  
TCCCCAGCTATACATCATGGTATCCCTCAGCGCACCAAGAAGCTATGCAGCAGCCTCAACTGATG

AGCGGACCGACGCGTACGCGGCCGCTCGAG - GFP Tag - GTTTAA



[View online »](#)

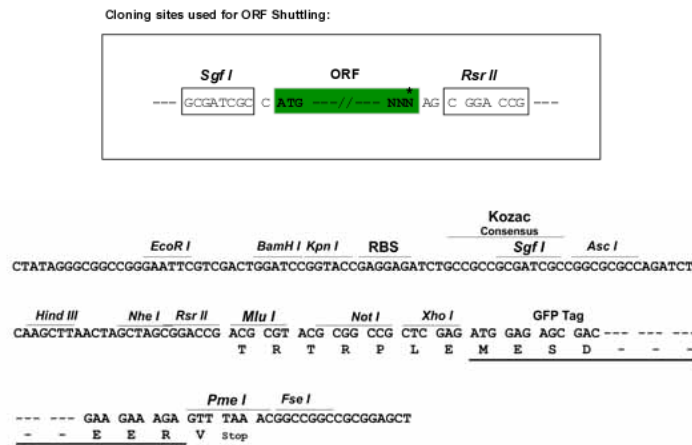
**Protein Sequence:** >MG203275 representing NM\_010053  
Red=Cloning site Green=Tags(s)

MTMTTPESLNSPVSGKAVFMEFGPPNQMSPPMSHGHYSMHCLHSAGHSQPDGAYSSASSFSRPLGYP  
 YNVSVSSHASSPYISSVQSYPGSASLAQSRLDPGADSEKSTVVEGGEVRFNGKGGKIRKPRTIYSSLQL  
 QALNRRFQQTQYLALPERAELAASLGLTQTQVKIWFQNKRSKFKKLMKQGGAALGALSANRALSAGSP  
 PVPPGWNPNSSSGKSGSSAGSYVPSYTSWYPSAHQEAMQPQLM

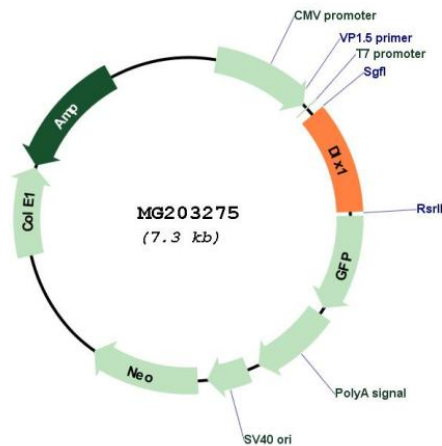
SGPTRRRLE - GFP Tag - V

**Restriction Sites:** SgfI-RsrII

**Cloning Scheme:**



**Plasmid Map:**



**ACCN:** NM\_010053

**ORF Size:** 765 bp

|                               |   |
|-------------------------------|---|
| <b>OTI Disclaimer:</b>        | The molecular sequence of this clone aligns with the gene accession number as a point of reference only. However, individual transcript sequences of the same gene can differ through naturally occurring variations (e.g. polymorphisms), each with its own valid existence. This clone is substantially in agreement with the reference, but a complete review of all prevailing variants is recommended prior to use. <a href="#">More info</a>  |
| <b>OTI Annotation:</b>        | This clone was engineered to express the complete ORF with an expression tag. Expression varies depending on the nature of the gene.  |
| <b>Components:</b>            | The ORF clone is ion-exchange column purified and shipped in a 2D barcoded Matrix tube containing 10ug of transfection-ready, dried plasmid DNA (reconstitute with 100 ul of water).  |
| <b>Reconstitution Method:</b> | <ol style="list-style-type: none"><li>1. Centrifuge at 5,000xg for 5min.</li><li>2. Carefully open the tube and add 100ul of sterile water to dissolve the DNA.</li><li>3. Close the tube and incubate for 10 minutes at room temperature.</li><li>4. Briefly vortex the tube and then do a quick spin (less than 5000xg) to concentrate the liquid at the bottom.</li><li>5. Store the suspended plasmid at -20°C. The DNA is stable for at least one year from date of shipping when stored at -20°C.</li></ol> |
| <b>RefSeq:</b>                | <a href="#">NM_010053.2</a>   |
| <b>RefSeq Size:</b>           | 2779 bp   |
| <b>RefSeq ORF:</b>            | 768 bp  |
| <b>Locus ID:</b>              | 13390   |
| <b>UniProt ID:</b>            | <a href="#">Q64317</a>  |
| <b>Cytogenetics:</b>          | 2 42.61 cM  |
| <b>Gene Summary:</b>          | The protein encoded by this gene is a homeobox-containing transcription factor involved in development. The encoded protein plays a role in craniofacial patterning, as well as in bone, placenta, and sensory organ formation. [provided by RefSeq, Aug 2015]  |