

Product datasheet for **MG203262**

Pgam1 (NM_023418) Mouse Tagged ORF Clone

Product data:

Product Type:	Expression Plasmids
Product Name:	Pgam1 (NM_023418) Mouse Tagged ORF Clone
Tag:	TurboGFP
Symbol:	Pgam1
Synonyms:	2310050F24Rik; Pgam-1
Mammalian Cell Selection:	Neomycin
Vector:	pCMV6-AC-GFP (PS100010)
E. coli Selection:	Ampicillin (100 ug/mL)
ORF Nucleotide Sequence:	>MG203262 representing NM_023418 Red =Cloning site Blue =ORF Green =Tags(s)

```
TTTTGTAATACGACTCACTATAGGGCGGCCGGGAATTCGTCGACTGGATCCGGTACCGAGGAGATCTGCC
GCCCGATCGCC
```

```
ATGGCTGCCTACAAGCTGGTGTGATCCGGCATGGCGAGAGCGCCTGGAACCTGGAGAACCGTTTCAGCG
GCTGGTACGACGCCGACCTGAGCCCGCGGGCCACGAGGAGGCGAAGCGCGGGCAGGCGTTGCGAGA
TGCTGGCTATGAATTTGACATCTGCTTACCTCTGTGCAAGAGAGCAATCCGGACCTCTGGACAGTC
CTGGATGCCATTGACCAGATGTGGTTGCCAGTGGTCAGGACTTGGCGCCTCAATGAGCGACTATGGCC
GTCTGACAGGTCTCAACAAAGCAGAACTGCTGCTAAGCATGGTGAGGCCAGGTAAGATCTGGAGACG
ATCTTATGATGTCCACCCTCCATGGAGCCTGATCACCCTTCTACAGCAACATCAGCAAGGATCGC
AGGTACGCAGACCTTACTGAAGACCAGTCCCTCCTGTGAGAGCCTGAAGGACTATTGCCAGAGCAC
TGCCCTTCTGGAATGAAGAAATTGTCCTCCAGATCAAAGAGGGGAAAAGGGTCTTGATTGCCGCCACGG
CAACAGCTTCGGGGTATCGTTAAGCATCTGGAGGGTCTCTCAGAAGAGGCCATCATGGAGCTGAACCTG
CCCACGGGCATCCCTATCGTCTATGAACTGGACAAGAATTGAAGCCCATCAAGCCCATGCGATTCCTGG
GAGACGAGGAGACCGTGCCAAAGCCATGGAAGCTGTGGCTGCTCAGGGCAAGGTGAAGAAG
```

```
ACGCGTACGCGGCCGCTCGAG - GFP Tag - GTTTAA
```



[View online »](#)

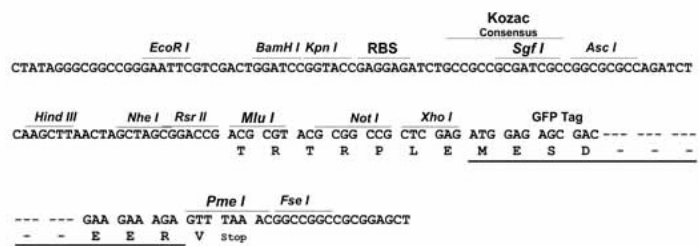
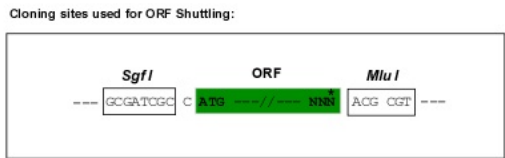
Protein Sequence: >MG203262 representing NM_023418
Red=Cloning site Green=Tags(s)

MAAYKLVLIRHGESAWNLENRFSGWYDADLSPAGHEEAKRGGQALRDAGYEFDICFTSVQKRAIRTLWTV
 LDAIDQMWLPVVRTWRLNERHYGGLTGLNKAETAARKHGEAQVKIWRRSYDVPPPPMEPDHPFYSNISKDR
 RYADLTEDQLPSCESLKDIIARALPFWNEEIVPQIQEKGRVLIAAHGNSLRGIVKHLEGLSEEAIMELNL
 PTGIPIVYELDKNLKPIKPMQFLGDEETVRKAMEAVAAQGVKK

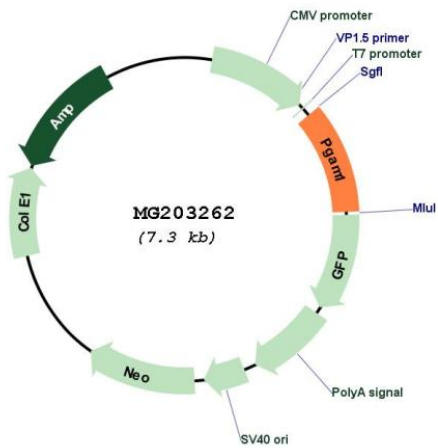
TRTRPLE – GFP Tag – V

Restriction Sites: SgfI-MluI

Cloning Scheme:



Plasmid Map:



ACCN: NM_023418

ORF Size: 762 bp

OTI Disclaimer:	The molecular sequence of this clone aligns with the gene accession number as a point of reference only. However, individual transcript sequences of the same gene can differ through naturally occurring variations (e.g. polymorphisms), each with its own valid existence. This clone is substantially in agreement with the reference, but a complete review of all prevailing variants is recommended prior to use. More info
OTI Annotation:	This clone was engineered to express the complete ORF with an expression tag. Expression varies depending on the nature of the gene.
Components:	The ORF clone is ion-exchange column purified and shipped in a 2D barcoded Matrix tube containing 10ug of transfection-ready, dried plasmid DNA (reconstitute with 100 ul of water).
Reconstitution Method:	<ol style="list-style-type: none">1. Centrifuge at 5,000xg for 5min.2. Carefully open the tube and add 100ul of sterile water to dissolve the DNA.3. Close the tube and incubate for 10 minutes at room temperature.4. Briefly vortex the tube and then do a quick spin (less than 5000xg) to concentrate the liquid at the bottom.5. Store the suspended plasmid at -20°C. The DNA is stable for at least one year from date of shipping when stored at -20°C.
RefSeq:	NM_023418.2 , NP_075907.2
RefSeq Size:	1855 bp
RefSeq ORF:	765 bp
Locus ID:	18648
UniProt ID:	Q9DBJ1
Cytogenetics:	19 C3
Gene Summary:	Interconversion of 3- and 2-phosphoglycerate with 2,3-bisphosphoglycerate as the primer of the reaction. Can also catalyze the reaction of EC 5.4.2.4 (synthase), but with a reduced activity.[UniProtKB/Swiss-Prot Function]