

Product datasheet for **MG203234**

C1qb (NM_009777) Mouse Tagged ORF Clone

Product data:

Product Type: Expression Plasmids
Product Name: C1qb (NM_009777) Mouse Tagged ORF Clone
Tag: TurboGFP
Symbol: C1qb
Mammalian Cell Selection: Neomycin
Vector: pCMV6-AC-GFP (PS100010)
E. coli Selection: Ampicillin (100 ug/mL)
ORF Nucleotide Sequence: >MG203234 representing NM_009777
 Red=Cloning site Blue=ORF Green=Tags(s)

TTTTGTAATACGACTCACTATAGGGCGGCCGGAATTCGTCGACTGGATCCGGTACCGAGGAGATCTGCC
 GCC**CGATCGCC**

ATGAAGACACAGTGGGGTGGAGTCTGGACACACCTGTTACTGCTGCTTCTAGGTTTTCTCCATGTGTCTCT
 GGGCCCAAAGCAGCTGCACCGGGCCCCCTGGCATCCCTGGCATCCCTGGGGTCCCTGGGGTCTCTGGCTC
 TGATGGCCAACCAAGGCACTCCAGGGATAAAGGGGGAGAAAGGGCTCCCTGGACTGGCTGGAGACCTTGTT
 GAGTTTGGAGAGAAAGGGGACCCAGGGATCCCTGGACTCCAGGCAAAGTTGGCCCTAAGGGTCCCGTCCG
 GCCCTAAGGGTACTCCAGGCCCTCTGGACCCCGCGGTCCCAAAGGCGATTCTGGGGACTACGGGGCTAC
 ACAGAAAGTGCCTTCTCTGCCCTGAGGACCATCAACAGCCCTTGCACCGAACCAGGTCATTTCGCTTC
 GAAAAGGTGATCACCAACGCGAACGAGAATATGAGCCACGCAACGCAAGTTACCTGCAAGGTGCCTG
 GCCTCTACTACTTACCTATCATGCCAGCTCCCGGGCAACCTGTGTGTGAATCTCGTTCGTGGCCGCGA
 TCGGGACAGCATGCAGAAAGTAGTCACCTTCTGTGACTATGCCCAGAACACCTTCCAGGTGACCACAGGT
 GGGGTAGTCTTGAAGCTAGAGCAAGAGGAGTTGTTACCTGCAGGCCACAGACAAGAATCCCTCTGG
 GCATTGAGGGTGCCAACAGCATCTTCACTGGCTTCTGCTTTCCCTGACATGGATGCG

ACGCGTACGCGGCCGCTCGAG - GFP Tag - GTTTAA

Protein Sequence: >MG203234 representing NM_009777
 Red=Cloning site Green=Tags(s)

MKTQWGEVWTHLLLLLFLHVSWAQSSCTGPPGIPGIPGVPGVPSDQPGTPGIKGEKGLPGLAGDLG
 EFGKGDPIPGTPGKVGPKGPVPGKTPGSPRGPKGDSGDYGATQKVAFSALRTINSPLRPNQVIRF
 EKVITNANENYEPRNGKFTCKVPLYYFTYHASSRGNLCVNLVRGRDRDSMQKVVFCDYAQNTFQVTTG
 GVVLKLEQEEVHLQATDKNSLLGIEGANSIFTGFLLPDMDA

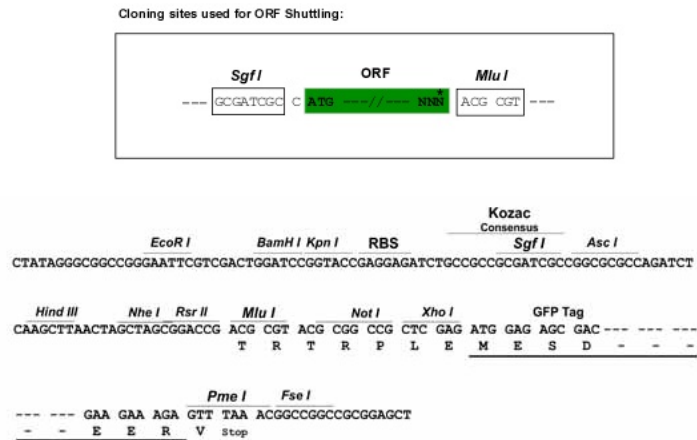
TRTRPLE - GFP Tag - V



[View online »](#)

Restriction Sites: SgfI-MluI

Cloning Scheme:



Plasmid Map:



ACCN: NM_009777

ORF Size: 759 bp

OTI Disclaimer: The molecular sequence of this clone aligns with the gene accession number as a point of reference only. However, individual transcript sequences of the same gene can differ through naturally occurring variations (e.g. polymorphisms), each with its own valid existence. This clone is substantially in agreement with the reference, but a complete review of all prevailing variants is recommended prior to use. [More info](#)

OTI Annotation: This clone was engineered to express the complete ORF with an expression tag. Expression varies depending on the nature of the gene.

Components:	The ORF clone is ion-exchange column purified and shipped in a 2D barcoded Matrix tube containing 10ug of transfection-ready, dried plasmid DNA (reconstitute with 100 ul of water).
Reconstitution Method:	<ol style="list-style-type: none">1. Centrifuge at 5,000xg for 5min.2. Carefully open the tube and add 100ul of sterile water to dissolve the DNA.3. Close the tube and incubate for 10 minutes at room temperature.4. Briefly vortex the tube and then do a quick spin (less than 5000xg) to concentrate the liquid at the bottom.5. Store the suspended plasmid at -20°C. The DNA is stable for at least one year from date of shipping when stored at -20°C.
RefSeq:	<u>NM_009777.3</u>
RefSeq Size:	1062 bp
RefSeq ORF:	762 bp
Locus ID:	12260
UniProt ID:	<u>P14106</u>
Cytogenetics:	4 69.05 cM
Gene Summary:	C1q associates with the proenzymes C1r and C1s to yield C1, the first component of the serum complement system. The collagen-like regions of C1q interact with the Ca(2+)-dependent C1r(2)C1s(2) proenzyme complex, and efficient activation of C1 takes place on interaction of the globular heads of C1q with the Fc regions of IgG or IgM antibody present in immune complexes.[UniProtKB/Swiss-Prot Function]