

Product datasheet for **MG203233**

Pgam2 (NM_018870) Mouse Tagged ORF Clone

Product data:

Product Type: Expression Plasmids
Product Name: Pgam2 (NM_018870) Mouse Tagged ORF Clone
Tag: TurboGFP
Symbol: Pgam2
Mammalian Cell Selection: Neomycin
Vector: pCMV6-AC-GFP (PS100010)
E. coli Selection: Ampicillin (100 ug/mL)
ORF Nucleotide Sequence: >MG203233 representing NM_018870
Red=Cloning site Blue=ORF Green=Tags(s)

TTTTGTAATACGACTCACTATAGGGCGGCCGGAATTCGTCGACTGGATCCGGTACCGAGGAGATCTGCC
GCCGCGATCGCC

ATGACCACCCACCGCCTAGTAATGGTTCGCCACGGTGAGAGCTTATGGAACCAAGAGAACCGTTTCTGTG
GCTGGTTTGTATGCAGAGCTGAGTGAGAAGGGAGCAGAGGAGGCCAAGCGGGGGCCACCGCTATCAAAGA
TGCCAAGATAGAGTTTGACATCTGCTACACGTCGGTGTGAAGCGGGCAATCCGCACCTTTGGACCATC
CTGGATGTTACGGACCAAATGTGGGTGCCCGTGGTGCCTACCTGGCGCCTCAATGAGCGGCACTATGGTG
GCCTCACAGGCCCTCAATAAGGCTGAGACGGCTGCAAAGCACGGGGAGGAGCAGGTGAAGATCTGGAGGCG
TTCCTTTGACACCCACCACCACCCATGGATGAGAAACACAACACTACTACACCTCCATCAGCAAGGACCGC
CGCTATGCAGGCTTGAAGCCTGAGGAGCTGCCTACCTGTGAAAGTCTCAAGGACACCATTGCCCGGGCCT
TGCCCTTCTGGAATGAGGAGATCGCACCTAAGATTAAGGCTGGCCAGAGAGTGCTTATTGCAGCCCATGG
GAACAGCCTTCGGGGCATTGTGAAACATCTGGAAGGGATGTCGACCAGGCCATCATGGAGCTGAACCTG
CCCCTGGAATCCCATTGTGTATGAGCTGGACCAGAACCTGAAGCCACCAAGCCCATGAGGTTCTCGG
GAGACGAAGACGGTTCGGAAGCCATGGAAGCTGTTGTGCCAGGAAAGGCGAAG

ACGCGTACGCGGCCGCTCGAG - GFP Tag - GTTTAA

Protein Sequence: >MG203233 representing NM_018870
Red=Cloning site Green=Tags(s)

MTTHRLVMVRHGESLWNQENRFQWFDALSEKGAEEAKRGATAIKDAKIEFDICYTSLVKRAIRTLWTI
LDVTDQMWVVPVVRTWRLNERHYGLTGLNKAETAAKHGEEQVKIWRRSFDTPPPPMDEKHNYYSISKDR
RYAGLKPEELPTCESLKDTIARALPFWNEEIPKIKAGQRVLIAAHGNSLRGIVKHLEGMSDQAIMELNL
PTGIPIVYELDQNLKPTKPMRFLGDEETVRKAMEAVAAQKAK

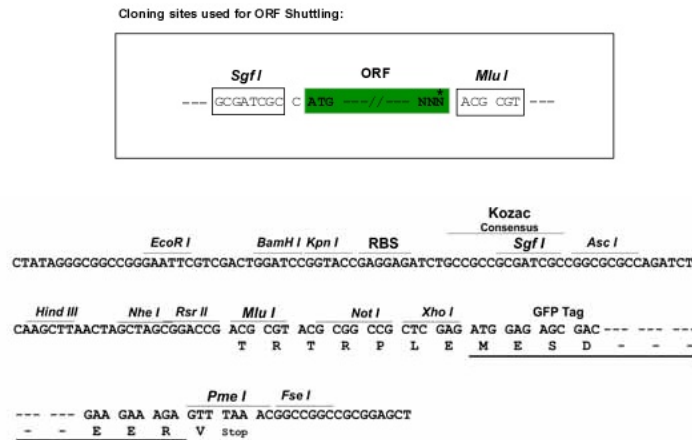
TRTRPLE - GFP Tag - V



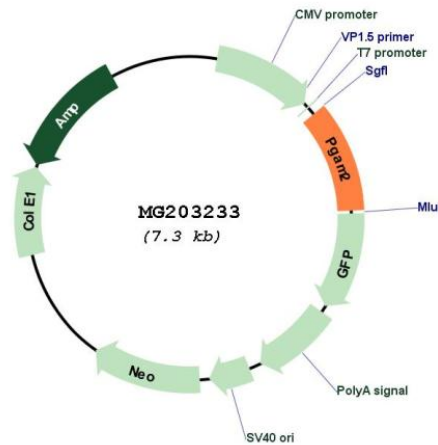
[View online »](#)

Restriction Sites: SgfI-MluI

Cloning Scheme:



Plasmid Map:



ACCN: NM_018870

ORF Size: 759 bp

OTI Disclaimer: The molecular sequence of this clone aligns with the gene accession number as a point of reference only. However, individual transcript sequences of the same gene can differ through naturally occurring variations (e.g. polymorphisms), each with its own valid existence. This clone is substantially in agreement with the reference, but a complete review of all prevailing variants is recommended prior to use. [More info](#)

OTI Annotation: This clone was engineered to express the complete ORF with an expression tag. Expression varies depending on the nature of the gene.

Components:	The ORF clone is ion-exchange column purified and shipped in a 2D barcoded Matrix tube containing 10ug of transfection-ready, dried plasmid DNA (reconstitute with 100 ul of water).
Reconstitution Method:	<ol style="list-style-type: none">1. Centrifuge at 5,000xg for 5min.2. Carefully open the tube and add 100ul of sterile water to dissolve the DNA.3. Close the tube and incubate for 10 minutes at room temperature.4. Briefly vortex the tube and then do a quick spin (less than 5000xg) to concentrate the liquid at the bottom.5. Store the suspended plasmid at -20°C. The DNA is stable for at least one year from date of shipping when stored at -20°C.
RefSeq:	<u>NM_018870.1</u>
RefSeq Size:	836 bp
RefSeq ORF:	762 bp
Locus ID:	56012
UniProt ID:	<u>O70250</u>
Cytogenetics:	11 A1
Gene Summary:	Interconversion of 3- and 2-phosphoglycerate with 2,3-bisphosphoglycerate as the primer of the reaction. Can also catalyze the reaction of EC 5.4.2.4 (synthase), but with a reduced activity.[UniProtKB/Swiss-Prot Function]