

Product datasheet for **MG203229**

PrI7a2 (NM_011168) Mouse Tagged ORF Clone

Product data:

Product Type:	Expression Plasmids
Product Name:	PrI7a2 (NM_011168) Mouse Tagged ORF Clone
Tag:	TurboGFP
Symbol:	PrI7a2
Synonyms:	Ghd18; PLP-F; PrIpf
Vector:	pCMV6-AC-GFP (PS100010)
E. coli Selection:	Ampicillin (100 ug/mL)
Cell Selection:	Neomycin
ORF Nucleotide Sequence:	>MG203229 representing NM_011168 Red=Cloning site Blue=ORF Green=Tags(s)

TTTTGTAATACGACTCACTATAGGGCGGCCGGGAATTCGTCGACTGGATCCGGTACCGAGGAGATCTGCC
GCC**GCGATCGCC**

ATGTCATTTTCTTCTCTCAACCATGCCCTCAGGGGCACTTCTGCTGGTGGTGGTGTCAAGCCTCCTTT
TATGGGAGAATGTGGCTCTGTACCTTTGAGTAGCAATGAGACTGATGGTTATCCATTATCCATCAATGG
GCTGTTTCATAATGCCATGAGACTAACTTGAATATCAAAAACCTCAACATGGAAGTGGCAAGACATAT
ACAGTCAATCAAGTCTCTGAAAAATTATACGAGAACTATATGCTTGACTTTATTGAGGACATGGAGTATC
TGGTCAAGGCTCTCACCTGCTGCCACAATTATCCATCAAAAACCTCCAGAAAACCTGGACGAAGCTCAACA
GATTCCTTTTAAACGAATTTCAAAGCTGATCCTCAGTAGAATGTGGGCTTGAATGAAACTTCTAAAGTT
CTACTGACCACACTCAGAAGTATCCAGGAATGCATGATGATGTCATTTTCATTAGCCAAAAACATTGAAA
CAAACTTGCAGAGCTTTTTGAGTACACCCAGAGTATACTCAACTCGATTTATGGAACAACAACAACAGG
AAATGTGGAATACACCGTCTTTTCTGGTCTTGAAGACTTAAATCATCTGATGAAGAATTTAGTCTTTTT
GACCTTTGTAATTTTCTATTGCTTACGTGTAGATATACATATGGTTGAACTTTATCTCAAGCTATTAG
AGTGTGTGGTATATGTTAGTAGTGATGTTTGTATCCAAAAATATTAGAGATGCTTCA

ACGCGTACGCGGCCGCTCGAG - GFP Tag - GTTTAA



[View online »](#)

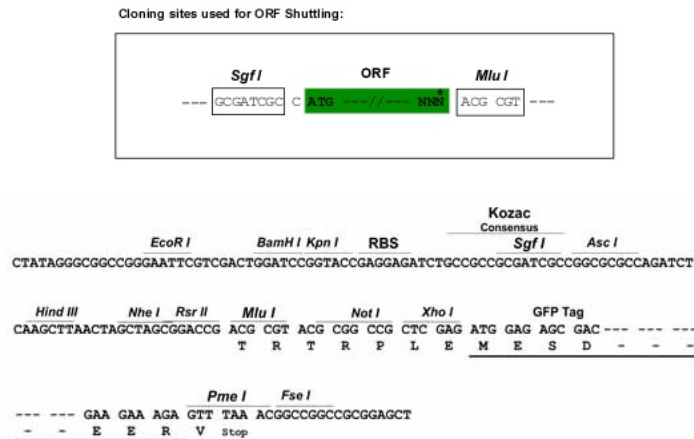
Protein Sequence: >MG203229 representing NM_011168
 Red=Cloning site Green=Tags(s)

MSFSFSQPCPSGALLLVVSSLLLWENVASVPLSSNETDGYPLSINGLFHNAMELRLTWNKLNLMELRKTY
 TVNQVSEKLYENYMLDFIEDMEYLKALTCCHNYSIKTPENLDEAQQIPFNEFPKLILSRMWAWNESKVL
 LLTTLRSIPGMHDDVISLAKNIETKLAELFEYTSILNSIYGTITTTGNVEYTVFSGLEDLKSDEEFSLF
 DLCKFSYCLRVDIHMVELYKLLLECVVYVSSDVCLSKNIRDAS

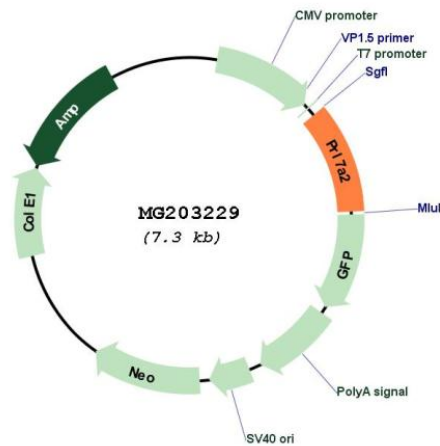
TRTRPLE - GFP Tag - V

Restriction Sites: SgfI-MluI

Cloning Scheme:



Plasmid Map:



ACCN: NM_011168

ORF Size: 759 bp

OTI Disclaimer:	The molecular sequence of this clone aligns with the gene accession number as a point of reference only. However, individual transcript sequences of the same gene can differ through naturally occurring variations (e.g. polymorphisms), each with its own valid existence. This clone is substantially in agreement with the reference, but a complete review of all prevailing variants is recommended prior to use. More info
OTI Annotation:	This clone was engineered to express the complete ORF with an expression tag. Expression varies depending on the nature of the gene.
RefSeq:	NM_011168.4 , NP_035298.1
RefSeq Size:	1280 bp
RefSeq ORF:	762 bp
Locus ID:	19114
UniProt ID:	A0A0M6L0L8 , O54831