

## Product datasheet for **MG203224**

### Tnfsf15 (NM\_177371) Mouse Tagged ORF Clone

#### Product data:

Product Type:	Expression Plasmids
Product Name:	Tnfsf15 (NM_177371) Mouse Tagged ORF Clone
Tag:	TurboGFP
Symbol:	Tnfsf15
Synonyms:	Tl1; Tl1a; Tnlg1b; Vegi
Mammalian Cell Selection:	Neomycin
Vector:	pCMV6-AC-GFP (PS100010)
E. coli Selection:	Ampicillin (100 ug/mL)
ORF Nucleotide Sequence:	>MG203224 representing NM_177371 Red=Cloning site Blue=ORF Green=Tags(s)

TTTTGTAATACGACTCACTATAGGGCGGCCGGAATTCGTCGACTGGATCCGGTACCGAGGAGATCTGCC  
GCC**CGATCGCC**

ATGGCAGAGGAGCTGGGGTTGGGCTTCGGAGAAGGAGTCCCAGTGGAAAGTCTGCCGGAAGGCTGTAGAC  
ACAGGCCAGAGGCCAGGGCCGGGCTAGCTGCCAGGAGCAAAGCCTGCCTGGCTCTCACCTGCTGCCTGTT  
GTCATTTCCATCCTCGCAGGACTTAGCACCTCCTAATGGCTGGCCAGCTCCGGTCCCGGAAAAGAC  
TGTATGCTTCGGCCATAACAGAAGAGAGATCTGAGCCTTACCACAGCAAGTTTACTCACCTCCCAGAG  
GCAAGCCGAGAGCACACCTGACAATTAAGAAACAAACCCAGCACCATCTGAAAAATCAGCTCTCTGC  
TCTACACTGGGAACATGACCTAGGGATGGCCTTACCAAGAACGGATGAAGTACATCAACAAATCCCTG  
GTGATCCCAGAGTCAGGAGACTATTTACTCTACTCCAGATCACATTCCGAGGGACCACATCTGTGTGTG  
GTGACATCAGTCGGGGGAGACGACCAACAAGCCAGACTCCATCACCATGGTTATCACCAAGGTAGCAGA  
CAGCTACCCTGAGCCTGCCCGCTACTAACAGGGTCCAAGTCTGTGTGTGAAATAAGCAACAAGTGGTTC  
CAGTCCCTCTACCTTGGGGCCACGTTCTCCTTGGAGAAGGAGACAGACTAATGGTAAACGTCAGTGACA  
TCTCCTTGGTGGATTACACAAAAGAAGATAAACTTTCTTTGGAGCTTTCTTGCTA

**ACGCGT**ACGCGGCCGCTCGAG - GFP Tag - GTTTAA



[View online »](#)

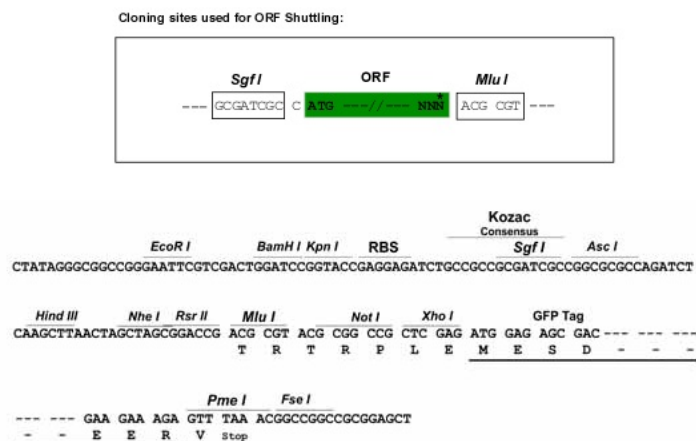
**Protein Sequence:** >MG203224 representing NM\_177371  
 Red=Cloning site Green=Tags(s)

MAEELGLGFEGVPEVLPEGCRHRPEARAGLAARSKACLALTCCLLSPILAGLSTLLMAGQLRVPKGD  
 CMLRAITEERSEPPSQVYSPPRGKPRHLTIKKQTPAPHLKNQLSALHWEHDLGMAFTKNGMKYINKSL  
 VIPESGDYFIYSQITFRGTTSVCGDISRGRPNKPDSTITMVIKTVADSYPEPARLLTGSKSVCEISNNWF  
 QSLYLGATFSLEEGDRLMVNVDISLVDYTKEDKTFFGAFL

TRTRPLE - GFP Tag - V

**Restriction Sites:** SgfI-MluI

**Cloning Scheme:**



**ACCN:** NM\_177371

**ORF Size:** 756 bp

**OTI Disclaimer:** The molecular sequence of this clone aligns with the gene accession number as a point of reference only. However, individual transcript sequences of the same gene can differ through naturally occurring variations (e.g. polymorphisms), each with its own valid existence. This clone is substantially in agreement with the reference, but a complete review of all prevailing variants is recommended prior to use. [More info](#)

**OTI Annotation:** This clone was engineered to express the complete ORF with an expression tag. Expression varies depending on the nature of the gene.

**Components:** The ORF clone is ion-exchange column purified and shipped in a 2D barcoded Matrix tube containing 10ug of transfection-ready, dried plasmid DNA (reconstitute with 100 ul of water).

**Reconstitution Method:**

1. Centrifuge at 5,000xg for 5min.
2. Carefully open the tube and add 100ul of sterile water to dissolve the DNA.
3. Close the tube and incubate for 10 minutes at room temperature.
4. Briefly vortex the tube and then do a quick spin (less than 5000xg) to concentrate the liquid at the bottom.
5. Store the suspended plasmid at -20°C. The DNA is stable for at least one year from date of shipping when stored at -20°C.

**RefSeq:** [NM\\_177371.4](#)

**RefSeq Size:** 3319 bp

**RefSeq ORF:** 813 bp

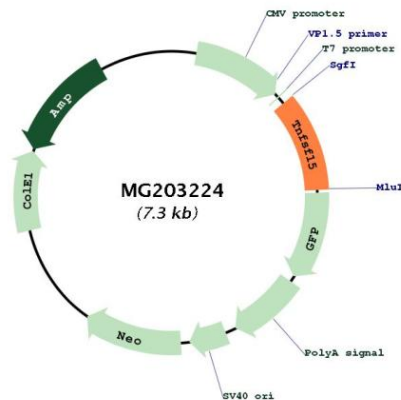
**Locus ID:** 326623

**UniProt ID:** [Q5UBV8](#)

**Cytogenetics:** 4 C1

**Gene Summary:** Receptor for TNFRSF25 and TNFRSF6B. Mediates activation of NF-kappa-B. Inhibits vascular endothelial growth and angiogenesis (in vitro). Promotes activation of caspases and apoptosis (By similarity). Promotes splenocyte alloactivation.[UniProtKB/Swiss-Prot Function]

## Product images:



Circular map for MG203224