

## Product datasheet for **MG203220**

### 1700102P08Rik (BC061048) Mouse Tagged ORF Clone

#### Product data:

Product Type:	Expression Plasmids
Product Name:	1700102P08Rik (BC061048) Mouse Tagged ORF Clone
Tag:	TurboGFP
Symbol:	1700102P08Rik
Synonyms:	A1593206
Vector:	pCMV6-AC-GFP (PS100010)
E. coli Selection:	Ampicillin (100 ug/mL)
Cell Selection:	Neomycin
ORF Nucleotide Sequence:	>MG203220 representing BC061048 Red=Cloning site Blue=ORF Green=Tags(s)

TTTTGTAATACGACTCACTATAGGGCGGCCGGGAATTCGTCGACTGGATCCGGTACCGAGGAGATCTGCC  
GCC**CGATCGC**C

ATGTCTGAAAACTACGAAGATGCAGAAAGGAGCTGACTGCTGCTATAGACCGAGCCTTTGAAGGAGTCA  
GGCATTCTCAGGAGTGACAGCCAGCAGAGGCTGGACGCCCCGTCGCTCACCTCCAGCCGGTACACAG  
GCTCCTCTGCAGAAACCCACTGGCTGCCTGCCCTCTGCTGCCCATACTCTGGTGCCTCGTGTGCTCCT  
GAGAGTGAGAACCCGGCCTTCGGGACACACCATATTCCGGTTAATTCAAACCTCAGCAGCCTCTATACC  
CCAAAAGGAAACCTCTGACCAGCAAGGAAAATGTCTTGATGCAGTCTTCCATTTGGCACGTGACAGACA  
GTTTTGGAGAGCTGCAGGTGATGGGGAAGACTGGAGAAAAGATAGTTAAGGAAGGATATGGAGAGAGAT  
TTAAAAGCTGACCCAAATGTAAGTCTCAGCAGTTCTAGCCAAGAGGTCACAAAGGATCTGCTAGACATGA  
TTGACCATAACAAGTATCCGAATATTGAAGAATTGGCTGGAAAAGTGAATTTGAAAATGAATTGAACCG  
TGTGTGGACTGCAAGATTCACCCCTCAAGGAGGAAGCCTGGGCCCTGCTTGTGGATGAGAGTCTC  
CAGAAGGCTCTGGATGCTGACCCTGGTAGCCTCAAGCAGGCTTTGGATGATCAGAATATAGTTGAGACTG  
TTCTGGACTTGAAGAAGACTACAACCTTGATGACTTCTTTTAAATACCAATAGAG

**ACGCGT**ACGCGGCCGCTCGAG - GFP Tag - GTTTAA



[View online »](#)

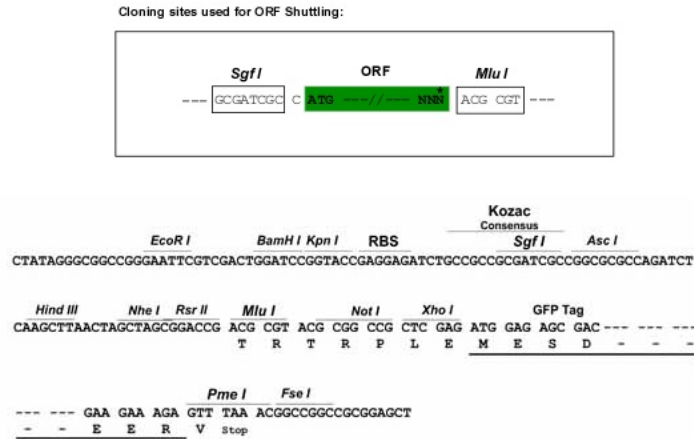
Protein Sequence: >MG203220 representing BC061048  
 Red=Cloning site Green=Tags(s)

MSEKLRRRCRKELTAAIDRAFEGVRRHSQECTAQQRLDAPSLTSQPVHRLLCRNPLAACPSAAPYSGASCAP  
 ESENPAFGTHHIPVNSKLQQPLYPKRKPLTSKENVLMQSSILARDRQFWRAAGDGEDWRKDSLKDMERD  
 LKADPNVLLSSSSQEVTKDLLDMIDHTSIRTIEELAGKLEFENELNRVCGHCQDSPFKEEAWALLVDESP  
 QKALDADPGSLKQALDDQNIIVETVLDLEEDYNLMTSFKYQIE

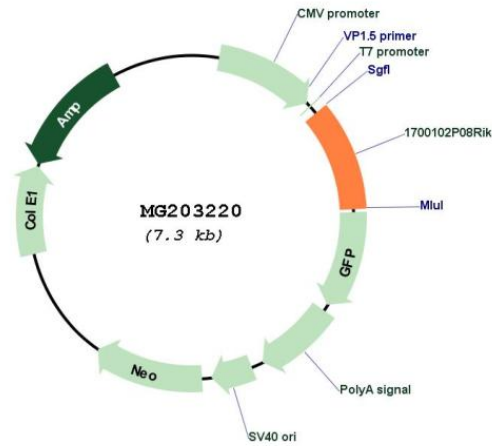
TRTRPLE - GFP Tag - V

Restriction Sites: SgfI-MluI

Cloning Scheme:



Plasmid Map:



ACCN: BC061048

ORF Size: 758 bp

<b>OTI Disclaimer:</b>	The molecular sequence of this clone aligns with the gene accession number as a point of reference only. However, individual transcript sequences of the same gene can differ through naturally occurring variations (e.g. polymorphisms), each with its own valid existence. This clone is substantially in agreement with the reference, but a complete review of all prevailing variants is recommended prior to use. <a href="#">More info</a>
<b>OTI Annotation:</b>	This clone was engineered to express the complete ORF with an expression tag. Expression varies depending on the nature of the gene.
<b>RefSeq:</b>	<a href="#">BC061048</a> , <a href="#">AAH61048</a>
<b>RefSeq Size:</b>	1129 bp
<b>RefSeq ORF:</b>	758 bp
<b>Locus ID:</b>	112418