

Product datasheet for **MG203214**

Ado (NM_001005419) Mouse Tagged ORF Clone

Product data:

Product Type: Expression Plasmids
Product Name: Ado (NM_001005419) Mouse Tagged ORF Clone
Tag: TurboGFP
Symbol: Ado
Synonyms: Gm237
Vector: pCMV6-AC-GFP (PS100010)
E. coli Selection: Ampicillin (100 ug/mL)
Cell Selection: Neomycin
ORF Nucleotide Sequence: >MG203214 representing NM_001005419
Red=Cloning site Blue=ORF Green=Tags(s)

TTTTGTAATACGACTCACTATAGGGCGGCCGGAATTCGTCGACTGGATCCGGTACCGAGGAGATCTGCC
GCC**GCGATCGCC**

ATGGCCTCCCTGATCCAGCGCATCGCTCGCCAGGCGTGTCTCACCTTCCGCGGCAGCTCGACGGGCTCCG
AAGGGCCGGCGCCGGCTTCCCAGGAACTGAGCCTGCTCAAGAGCCTGCTGACCCAGGTGCGCGCCGA
GGACCTCAACATCGCGCCGCGCAAGGCGCTGCCGAGCCGCTGCCCGCAACCTCCCGCCGGTCACTAC
ATGCACATCTACGAGACGGAGGGCTTACGCTGGGCGTGTTCCTGCTCAAGAGCGGCACGTGCATCCCGC
TGCACGACCACCCGGGCATGCACGGTATGCTCAAGGTGCTGTACGGCACGGTCCGCATCAGCTGCATGGA
CAAGCTGGACACGGGGCCGGGCATCGGCGGCCCGCCAGAGCAGTTCGAGCCCCGCTGCAGCCC
TTGGAGCGGGAGGCCGTGCGACCGGGCGTGTGCTTCCCGGGCCGAGTACACCGAGGCCAGTGGGCCCT
GCGTGTCACTCCACACCGGGACAACCTGCACCAGATTGATGCCGTGGACGGGCCAGCTGCCTTCTGGA
CATCTGGCCCCACCCTACGACCGGAGGACGGCCGGGACTGCCACTATTACCGTGTAGTGGAGCCCATC
AGACCCAAGGAGGCTTCCGGCTCTGCTGCGACCTTCCCGAGAAGTGTGGCTCCTGGAGACACCACAGG
CCGACGACTTCTGGTGCAGGGAGAGCCCTATCCAGGCCCAAGTCTACCT

ACGCGTACGCGGCCGCTCGAG - GFP Tag - GTTTAA



[View online »](#)

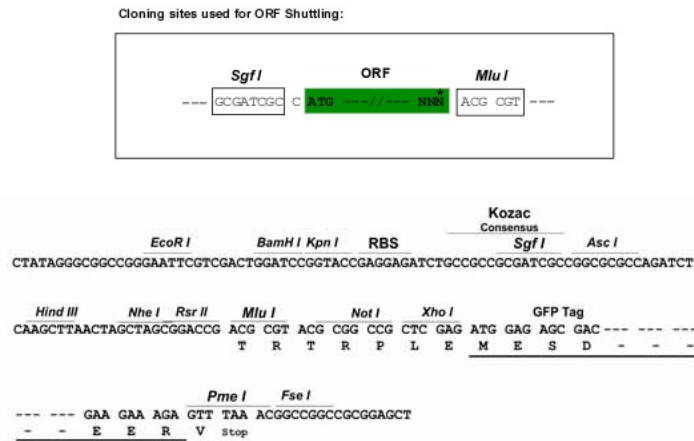
Protein Sequence: >MG203214 representing NM_001005419
 Red=Cloning site Green=Tags(s)

MASLIQRIARQACLFRGSSTGSEGPAPGFENLSLLKSLLTQVRAEDLNIAPRKALPQPLPRNLPPVTY
 MHIYETEGFSLGVFLKSGTCIPLHDHPGMHGMLKVL YGTVRISCMDKLDTGAGHRRPPEQQFEPPLQP
 LEREAVRPGVLRSAEYTEASGPCVLT PHRDNLHQIDAVDGPAAFLDILAPPYDPEDGRDCHYYRVVEPI
 RPKEASGSACDLPREVWLLETQADDFWCEGEPYPGPKVLP

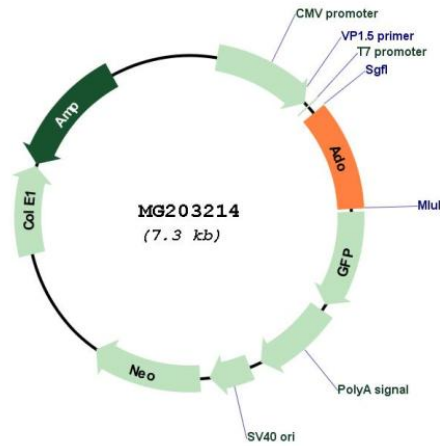
TRTRPLE - GFP Tag - V

Restriction Sites: SgfI-MluI

Cloning Scheme:



Plasmid Map:



ACCN: NM_001005419

ORF Size: 753 bp

OTI Disclaimer:	The molecular sequence of this clone aligns with the gene accession number as a point of reference only. However, individual transcript sequences of the same gene can differ through naturally occurring variations (e.g. polymorphisms), each with its own valid existence. This clone is substantially in agreement with the reference, but a complete review of all prevailing variants is recommended prior to use. More info
OTI Annotation:	This clone was engineered to express the complete ORF with an expression tag. Expression varies depending on the nature of the gene.
RefSeq:	NM_001005419.1 , NP_001005419.1
RefSeq Size:	3849 bp
RefSeq ORF:	771 bp
Locus ID:	211488
UniProt ID:	Q6PDY2