

Product datasheet for **MG203191**

Sbds (NM_023248) Mouse Tagged ORF Clone

Product data:

Product Type: Expression Plasmids
Product Name: Sbds (NM_023248) Mouse Tagged ORF Clone
Tag: TurboGFP
Symbol: Sbds
Synonyms: 4733401P19Rik; AI836084; CGI-97; SDS
Mammalian Cell Selection: Neomycin
Vector: pCMV6-AC-GFP (PS100010)
E. coli Selection: Ampicillin (100 ug/mL)
ORF Nucleotide Sequence: >MG203191 representing NM_023248
 Red=Cloning site Blue=ORF Green=Tags(s)

TTTTGTAATACGACTCACTATAGGGCGCCGGGAATTCGTCGACTGGATCCGGTACCGAGGAGATCTGCC
 GCC**CGATCGCC**

ATGTCGATCTTCACCCCCACCAACCAGATCCGACTGACCAATGTGGCCGTGGTGC GGATGAAGCGGGGAG
 GGAAGCGCTTCGAAATCGCCTGCTATAAAAACAAGGTCGTCGGCTGGCGGAGTGGCGTGGAAAAAGACCT
 TGATGAAGTTCTGCAGACCCATTTCAGTGGTTGTAATGTTTCAAAGGTCAGGTTGCCAAGAAGGAAGAC
 CTCATCAGTGCATTTGGACAGACGACCAGACTGAAATCTGCAAGCAGATTTTGACTAAAGGAGAAGTTC
 AAGTGTGAGATAAAGAACGGCACACACAGCTGGAGCAGATGTTTAGGGATATCGCCACCATTGTGGCAGA
 CAAGTGTGTGAACCCAGAAACAAAGAGACCTTACACCGTTATCCTCATCGAGAGGCCATGAAGGACATC
 CACTACTCCGTGAAACCAACAAGAGCACAAAGCAACAGGCTTTGGAAGTGATAAAGCAGCTGAAAGAGA
 AGATGAAGATAGAGCGGGCCACATGCGATTGCGCTTCATCCTGCCAGTGAACGAAGGGAAGAAGCTGAA
 GGAGAAGCTGAAGCCACTGATGAAGGTGGTGGAGAGTGAGGACTACAGCCAGCAGCTGGAGATCGTGTGC
 CTCATCGACCCAGGCTGCTTCAGAGAAATTGATGAGCTAATAAAAAAGGAAACGAAAGGCCAGGGTTCTC
 TGAAGTGCTCAGTCTGAAGGACGTGGAGGAAGGCGATGAGAAGTTTGAA

ACGCGTACGCGGCCGCTCGAG - GFP Tag - GTTTAA



[View online »](#)

Protein Sequence: >MG203191 representing NM_023248
 Red=Cloning site Green=Tags(s)

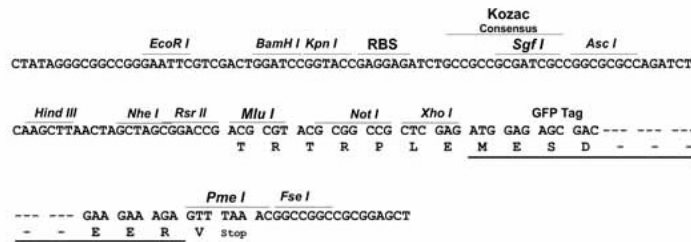
MSIFPTPTNQIRLTNVAVVRMKRGGKRFEIACYKNKVVGWRSVVEKDLDEVLQTHSVFVNVSKGQVAKKED
 LISAFGTDDQTEICKQILTKGEVQVSDKERHTQLEQMFQDIATIVADKCVNPETKRPYTVILIERAMKDI
 HYSVKPNKSTKQQALEVIKQLKEKMKIERAHMRLRFILPVNEGKLLKELKPLMKVVESEDYSQQLEIVC
 LIDPGCFREIDELIKKETKGRGSLEVELSLKDVEEGDEKFE

TRTRPLE - GFP Tag - V

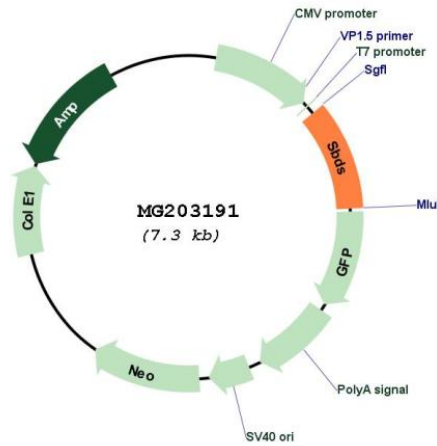
Restriction Sites: SgfI-MluI

Cloning Scheme:

Cloning sites used for ORF Shutting:



Plasmid Map:



ACCN: NM_023248

ORF Size: 750 bp

OTI Disclaimer:	The molecular sequence of this clone aligns with the gene accession number as a point of reference only. However, individual transcript sequences of the same gene can differ through naturally occurring variations (e.g. polymorphisms), each with its own valid existence. This clone is substantially in agreement with the reference, but a complete review of all prevailing variants is recommended prior to use. More info
OTI Annotation:	This clone was engineered to express the complete ORF with an expression tag. Expression varies depending on the nature of the gene.
Components:	The ORF clone is ion-exchange column purified and shipped in a 2D barcoded Matrix tube containing 10ug of transfection-ready, dried plasmid DNA (reconstitute with 100 ul of water).
Reconstitution Method:	<ol style="list-style-type: none">1. Centrifuge at 5,000xg for 5min.2. Carefully open the tube and add 100ul of sterile water to dissolve the DNA.3. Close the tube and incubate for 10 minutes at room temperature.4. Briefly vortex the tube and then do a quick spin (less than 5000xg) to concentrate the liquid at the bottom.5. Store the suspended plasmid at -20°C. The DNA is stable for at least one year from date of shipping when stored at -20°C.
RefSeq:	NM_023248.2
RefSeq Size:	1495 bp
RefSeq ORF:	753 bp
Locus ID:	66711
UniProt ID:	P70122
Cytogenetics:	5 G1.3
Gene Summary:	This gene encodes a protein that is necessary for ribosome function and maintaining normal levels of protein synthesis. The encoded protein may function to activate ribosomes for translation, and may be involved in cellular response to stress and DNA damage. Loss of this gene is embryonic lethal while deficiency of the encoded protein in the pancreas is associated with symptoms of Shwachman-Diamond syndrome. [provided by RefSeq, Dec 2015]