

Product datasheet for **MG203190**

Gosr1 (NM_016810) Mouse Tagged ORF Clone

Product data:

Product Type: Expression Plasmids
Product Name: Gosr1 (NM_016810) Mouse Tagged ORF Clone
Tag: TurboGFP
Symbol: Gosr1
Synonyms: AI414660; AI426320; BB145494; GOS-28; GOSRI; GS28
Vector: pCMV6-AC-GFP (PS100010)
E. coli Selection: Ampicillin (100 ug/mL)
Cell Selection: Neomycin
ORF Nucleotide Sequence: >MG203190 representing NM_016810
Red=Cloning site Blue=ORF Green=Tags(s)

TTTTGTAATACGACTCACTATAGGGCGGCCGGGAATTCGTCGACTGGATCCGGTACCGAGGAGATCTGCC
GCC**GCGATCGC**C

ATGGCGGCAGGAACCAGCAATTACTGGGAAGATCTCAGGAAACAAGCTCGGCAGCTGGAAAACGAACTTG
ACCTGAAACTCGTTTCCTTCAGTAACTCTGTACGAGCTACAGCCACAGCGGCTCACGGGATGGAGGACG
CGATAGGTACAGTTCTGACACAACCCGCTATTAATGGATCAAGCCAAGACAGAATGTTTGAGACAATG
GCAATTGAAATTGAACAGCTTTTGGCAAGGCTTACAGGAGTAAACGACAAAATGGCAGAGTACACCCACA
GTGCAGGGGTGCCCTCCCTGAATGCAGCCCTGATGCACACGCTGCAGCGACACAGAGACATTCTGCAGGA
TTATACACACGAATTTTCATAAAACCAAAGCAAACCTTTACGGCAATACGGGAAAGGGAGAATCTCATGGGA
TCAGTACGGAAAGATATTGAGTCATATAAAAGCGGGTCTGGAGTAAACAACAGGAGAACGGAACCTGTTTC
TGAAAGAGCATGACCACCTTCGAAACTCTGATCGTCTGATAGAAGAAACAATAAGCATTGCTATGGCAAC
AAAAGAGAATATGACTTCCCAGAGAGGAATGCTCAAGTCAATTCACAGCAAGATGAACACTCTGGCCAAC
CGCTTTCCTGCCGTGAACAGCCTGATACAAAGGATCAACCTTAGGAAACGGCGTGACTCGCTCATCCTTG
GAGGTGCATTGGCATCTGCACCATCTGTTGCTGCTGTATGCGTTCAC

ACGCGTACGCGGCCGCTCGAG - GFP Tag - GTTTAA



[View online »](#)

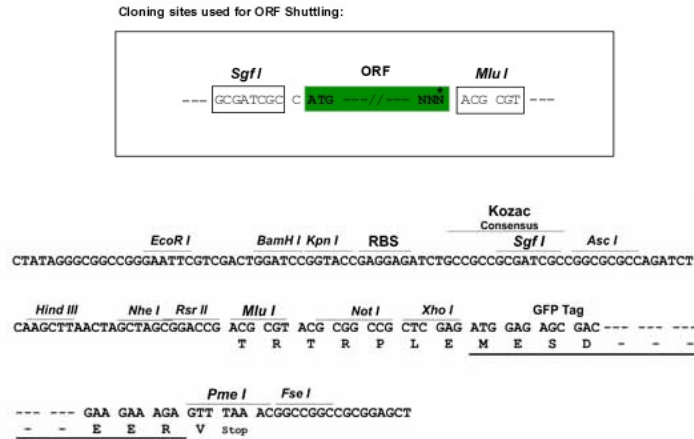
Protein Sequence: >MG203190 representing NM_016810
 Red=Cloning site Green=Tags(s)

MAAGTSNYWEDLRKQARQLENELDLKLVSFSLKCTSYSHSGSRDGGDRYSSDTPLLNGSSQDRMFETM
 AIEIEQLLARLTGVNDKMAEYTHSAGVPSLNAALMHTLQRHRDILQDYTHEFHKTKANFTAIRERENLMG
 SVRKDIESYKSGSGVNNRRTFLKEHDHLRNSDRLEIETISIAMATKENMTSQRGMLKSIHMKMNTLAN
 RFPVNSLIQRINLRKRRDLSLILGGVIGICTILLLLLYAFH

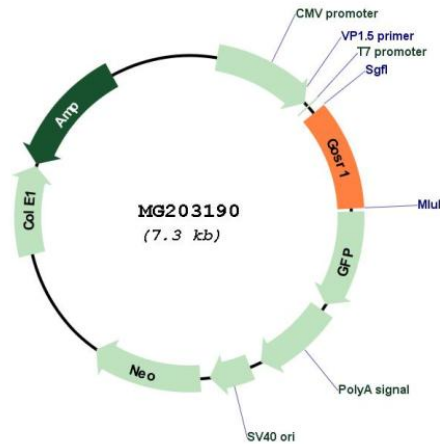
TRTRPLE - GFP Tag - V

Restriction Sites: SgfI-MluI

Cloning Scheme:



Plasmid Map:



ACCN: NM_016810

ORF Size: 750 bp

OTI Disclaimer:	The molecular sequence of this clone aligns with the gene accession number as a point of reference only. However, individual transcript sequences of the same gene can differ through naturally occurring variations (e.g. polymorphisms), each with its own valid existence. This clone is substantially in agreement with the reference, but a complete review of all prevailing variants is recommended prior to use. More info
OTI Annotation:	This clone was engineered to express the complete ORF with an expression tag. Expression varies depending on the nature of the gene.
RefSeq:	NM_016810.4
RefSeq Size:	4265 bp
RefSeq ORF:	753 bp
Locus ID:	53334
UniProt ID:	O88630
Gene Summary:	Involved in transport from the ER to the Golgi apparatus as well as in intra-Golgi transport. It belongs to a super-family of proteins called t-SNAREs or soluble NSF (N-ethylmaleimide-sensitive factor) attachment protein receptor. May play a protective role against hydrogen peroxide induced cytotoxicity under glutathione depleted conditions in neuronal cells by regulating the intracellular ROS levels via inhibition of p38 MAPK (MAPK11, MAPK12, MAPK13 and MAPK14). Participates in docking and fusion stage of ER to cis-Golgi transport. Plays an important physiological role in VLDL-transport vesicle-Golgi fusion and thus in VLDL delivery to the hepatic cis-Golgi (By similarity).[UniProtKB/Swiss-Prot Function]