

## Product datasheet for **MG203189**

### **Pgap2 (NM\_145583) Mouse Tagged ORF Clone**

#### Product data:

Product Type:	Expression Plasmids
Product Name:	Pgap2 (NM_145583) Mouse Tagged ORF Clone
Tag:	TurboGFP
Symbol:	Pgap2
Synonyms:	1810006G21Rik; C76649; Frag1
Vector:	pCMV6-AC-GFP (PS100010)
E. coli Selection:	Ampicillin (100 ug/mL)
Cell Selection:	Neomycin
ORF Nucleotide Sequence:	>MG203189 representing NM_145583 Red=Cloning site Blue=ORF Green=Tags(s)

TTTTGTAATACGACTCACTATAGGGCGGCCGGGAATTCGTCGACTGGATCCGGTACCGAGGAGATCTGCC  
GCC**CGGATCGCC**

ATGTACCAGGTCCCCTGACATTGGACCGGGATGGGACCCTAGTCCGGCTCCGCTTCACTATGGTGGCCC  
TGATCACTGTCTGCTGTCCACTTGTGCGCTTCTTCTTCTGCATCCTGTGGTCCCTGCTCTTTCACCTCAA  
GGAGACAACATCTACACTGTGGGGTGCCAATTACCTGCCATCAGTGAGCTCCGCCATTGGTGGGGAG  
GTCCCCAACGCTACGTGTGGCGTTTCTGCATTGGCCTGCACTCGGCACCCCGCTTCTTGACAGCCTTCG  
CCTATTGGAACCACTACCTCAGCTGTGCGTCTCCATGTCCGGGTTACCGCCTTCTCTGCCGATTAACCT  
CAGTCTCAATGTGGTGGAGAACCCTCGCGCTGCTCGTGCTCACCTACGTCTCCTCCTCCGAGGACTTCACC  
ATCCACGAAAATGCTTTCATTGTGTTTATCGCGGCATCCCTCGGTTACATGCTCCTCACCTGCATTCTCT  
GGCGGCTGACCAAGAAGCACACAGATCGCAAGTCTACAGCTGGAAACAGCGGCTCTTCGTCATCAACT  
CATCTCCTTCTTCTCGGCGCTGGCTGTCTACTCCGGCACAACATGTATTGTGAGGCTGGAGTGTATACC  
ATCTTTGCCATCCTGGAGTACACTGTTGTCCTAACCAACATGGCGTTCACATGACAGCCTGGTGGGACT  
TCGGGAACAAAGAGCTGCTAATAACCTCTCAGCCTGAGGAAAAGAGATTC

**ACGCGT**ACGCGGCCGCTCGAG - GFP Tag - GTTTAA



[View online »](#)

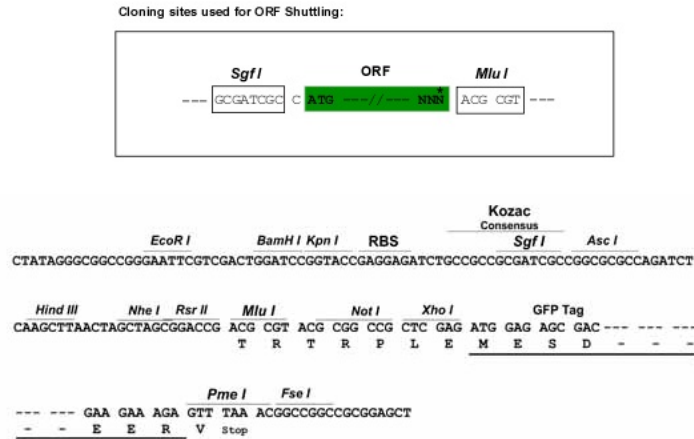
Protein Sequence: >MG203189 representing NM\_145583  
 Red=Cloning site Green=Tags(s)

MYQVPLTLDRDGLVRLRFTMVALITVCCPLVAFFFCILWLLFHFKETTSTHCGVPNYLPSVSSAIGGE  
 VPQRYVWRFCIGLHSA PRFLTAFAYWNHYLSCASPCGYRLLCRINFSLNVVENLALLVLTYYVSSSEDF  
 IHENAFIVFIAASLGYMLLTICILWRLTKKHTDRKSYSWKQRLFVINFI SFFSALAVYFRHNMYCEAGVYT  
 IFAILEYTVVLTNMAFHMTAWWDFGNKELLITSQPEEKRF

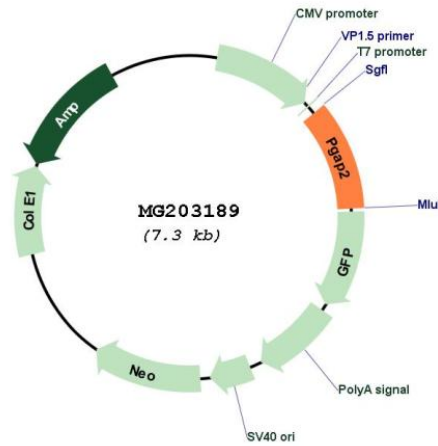
TRTRPLE - GFP Tag - V

Restriction Sites: SgfI-MluI

Cloning Scheme:



Plasmid Map:



ACCN: NM\_145583

ORF Size: 750 bp

<b>OTI Disclaimer:</b>	The molecular sequence of this clone aligns with the gene accession number as a point of reference only. However, individual transcript sequences of the same gene can differ through naturally occurring variations (e.g. polymorphisms), each with its own valid existence. This clone is substantially in agreement with the reference, but a complete review of all prevailing variants is recommended prior to use. <a href="#">More info</a>
<b>OTI Annotation:</b>	This clone was engineered to express the complete ORF with an expression tag. Expression varies depending on the nature of the gene.
<b>RefSeq:</b>	<a href="#">NM_145583.3</a>
<b>RefSeq Size:</b>	1184 bp
<b>RefSeq ORF:</b>	753 bp
<b>Locus ID:</b>	233575
<b>UniProt ID:</b>	<a href="#">Q3TQR0</a> , <a href="#">Q3U6W8</a>
<b>Gene Summary:</b>	Involved in the lipid remodeling steps of GPI-anchor maturation. Required for stable expression of GPI-anchored proteins at the cell surface (By similarity).[UniProtKB/Swiss-Prot Function]