

## Product datasheet for **MG203175**

### **Gtf2f2 (NM\_026816) Mouse Tagged ORF Clone**

#### Product data:

Product Type:	Expression Plasmids
Product Name:	Gtf2f2 (NM_026816) Mouse Tagged ORF Clone
Tag:	TurboGFP
Symbol:	Gtf2f2
Synonyms:	1110031C13Rik; AI326315
Vector:	pCMV6-AC-GFP (PS100010)
E. coli Selection:	Ampicillin (100 ug/mL)
Cell Selection:	Neomycin
ORF Nucleotide Sequence:	>MG203175 representing NM_026816 Red=Cloning site Blue=ORF Green=Tags(s)

TTTTGTAATACGACTCACTATAGGGCGGCCGGGAATTCGTCGACTGGATCCGGTACCGAGGAGATCTGCC  
GCC**CGATCGC**

ATGGCGGAGCGCGGGAACTCGATCTGACGGGCGCCAAACAGAACACCGCGTGTGGCTGGTCAAGGTTCTAAATATTTGTCCAGCAATGGGCAAAGCCTCTGGAAGAGGTGAAGTTGGGAACTGAGGATTGCCAA  
AAATCAAGGAAGGACTGAGGTATCATTTACTTTGAACGAGGATCTTGCAAATATTCATGACATCGGTGGG  
AAACCAGCTTCAGTCAGTGCTCCTAGAGAACCCATTTGTCTTGCAAAGTGTGGCGGACAGACATTAA  
CAGTGTTTACGGAGAGCTCCTCAGATAAACTGTCATTGGAAGGAATAGTGGTGCAGAGAGCGGAATGCCG  
GCCTGCTGCCAGTGAGAACTACATGAAATTAAGAGATTGCAAATAGAAGAATCTTCGAAACCTGTAAGG  
CTCTCACAAACAGCTGGACAAAGTTGTAACAACCAATTACAAGCCTGTTGCTAACCATCAGTACAATATTG  
AATATGAAAGGAAGAAGAAAGAGGATGGAAAGCGAGCTCGGCGAGACAAACAACATGTCCTAGACATGCT  
GTTCTCTGCCTTTGAGAAGCATCAGTACTATAATCTCAAGGACTTGGTGGACATCACAAGCAGCCTGTG  
GGATACCTGAAAGAAATCTTGAAGAAATTGGCATTGAGAAATGAAAAGGAATTCACAAGAACACATGGG  
AGCTGAAGCCAGAGTACAGGCATTACCAACAGAAGAGAAGAGCGAC

**ACGCGT**ACGCGGCCGCTCGAG - GFP Tag - GTTTAA



[View online »](#)

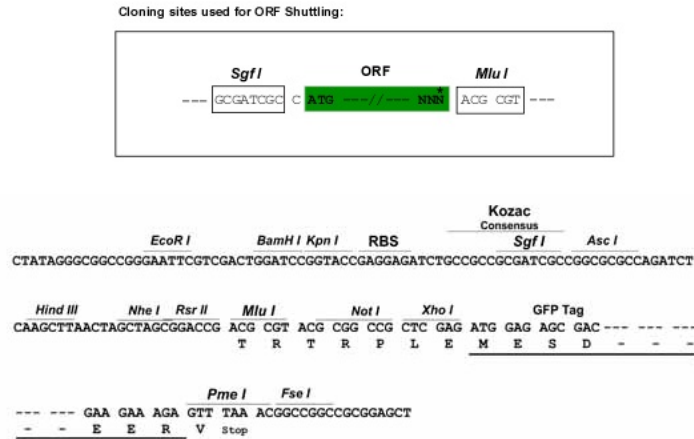
Protein Sequence: >MG203175 representing NM\_026816  
 Red=Cloning site Green=Tags(s)

MAERGELDLTGAKQNTGVWLKVKPKYLSQQWAKASGRGEVGLRIAKNQGRTEVSFTLNEDLANIHDIGG  
 KPASVSAPREHPFVLQSVGGQTLTVFTESSDKLSLEGI VVQRAECRPAASENYMKLRKLEESSKPV  
 LSQQLDKVVTNTYKPVANHQYNI EYERKKKEDGKRARADKQHVLDMLFSAFEKHQYYNLKDLVDITKQPV  
 GYLKEILKEIGIQNVKGIHKNTWELKPEYRHYQTEEKSD

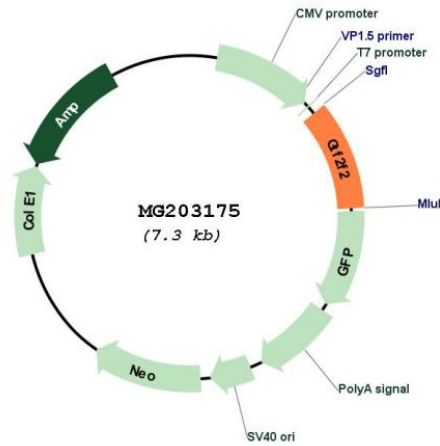
TRTRPLE - GFP Tag - V

Restriction Sites: SgfI-MluI

Cloning Scheme:



Plasmid Map:



ACCN: NM\_026816

ORF Size: 747 bp

<b>OTI Disclaimer:</b>	The molecular sequence of this clone aligns with the gene accession number as a point of reference only. However, individual transcript sequences of the same gene can differ through naturally occurring variations (e.g. polymorphisms), each with its own valid existence. This clone is substantially in agreement with the reference, but a complete review of all prevailing variants is recommended prior to use. <a href="#">More info</a>
<b>OTI Annotation:</b>	This clone was engineered to express the complete ORF with an expression tag. Expression varies depending on the nature of the gene.
<b>RefSeq:</b>	<a href="#">NM_026816.1</a>
<b>RefSeq Size:</b>	1468 bp
<b>RefSeq ORF:</b>	750 bp
<b>Locus ID:</b>	68705
<b>UniProt ID:</b>	<a href="#">Q8R0A0</a> , <a href="#">Q3UMJ4</a>
<b>Gene Summary:</b>	TFIIF is a general transcription initiation factor that binds to RNA polymerase II and helps to recruit it to the initiation complex in collaboration with TFIIB. It promotes transcription elongation. This subunit shows ATP-dependent DNA-helicase activity (By similarity). [UniProtKB/Swiss-Prot Function]