

Product datasheet for **MG203157**

Rtp4 (BC024872) Mouse Tagged ORF Clone

Product data:

Product Type: Expression Plasmids
Product Name: Rtp4 (BC024872) Mouse Tagged ORF Clone
Tag: TurboGFP
Symbol: Rtp4
Synonyms: 5830458K16Rik; Ifrg28
Mammalian Cell Selection: Neomycin
Vector: pCMV6-AC-GFP (PS100010)
E. coli Selection: Ampicillin (100 ug/mL)
ORF Nucleotide Sequence: >MG203157 representing BC024872
Red=Cloning site Blue=ORF Green=Tags(s)

TTTTGTAATACGACTCACTATAGGGCGGCCGGAATTCGTCGACTGGATCCGGTACCGAGGAGATCTGCC
GCC**CGATCGCC**

ATGCTGTTCCCCGATGACTTCAGTACTTGGGAGCAGACATTTCAAGAAGTGCAGGAGGAGAAGCCCG
GGGCCAAGTGGAGCCTGCATTTGGATAAGAACATTGTACCAGATGGTGCAGCCCTGGGATGGAGGCAGCA
CCAGCAGACAGTGTGGCAGGTTCCAGTGTCCAGATGCTGCAGAAGTTGGACCTCTGCTCAGGTGATG
ATCTTGTGCCACATGTACCAGGACACTTTGAAATCGCAGGGCCAGGCACGCATGAGGATCTTTGGTCAGA
AGTGCCAGAAGTGTGGATGTCAATTTGAGACTCCCAAGTTCTCCACAGAGATCATCAAAGAATTCT
GAATAACCTAGTTAATTATATTCTGCAGAGATACTATGGACACAGGAAGATAGCATTGACCTTGAATGCA
TCTTTGGGTGAGAAGGTGACTTTGGATGGTCCCCACGACATACGCAATTGTGAGGCATGCAGTCTAACT
CTCATGGAAGATGTGCCCTTGCATACAAAGTAAAACCACCCAGATCCCCATCTCCATTACCAAAGAGTTC
CTCCCCATCAAAGAGCTGCCCTCCTCCGCTCAGAACCAGGAATATGGATTTTGGGAATAGAAGTTCAG
GATTTTGGGAATAGAAGTTCAGGGATGCAGAGAGCCCCCAACGTGAAATAGGGCCACCACTATTTCT
TGTTTTGTCTATTGCTGATTTGCCCTTTTAGTCTTTTCACTAGA

ACGCGTACGCGGCCGCTCGAG - GFP Tag - GTTTAA



[View online »](#)

Protein Sequence: >MG203157 representing BC024872
 Red=Cloning site Green=Tags(s)

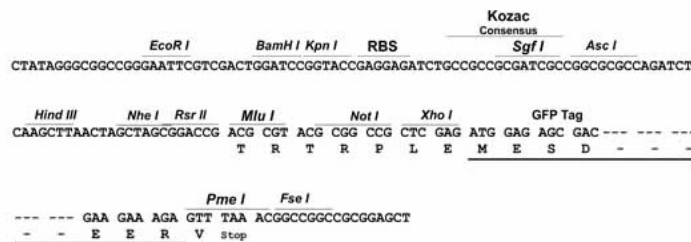
MLFPDDFSTWEQTFQELMQEEKPGAKWSLHLDKNI VPDGAALGWRQHQQTVLGRFQCSRCCRSWTS AQVM
 ILCHMYQDTLKSQGOARMRIFGQKCKFCGQFETPKFSTEIIKRILNVLVNYILQRYYGHRKIALTLNA
 SLGEKVTLDGPHDIRNCEACSLNSHGRCALAYKVKPPRSPSPLPKSSSPKSCPPPPPQNRNMDFGNRTFQ
 DFGNRTFQGCREPPQREIGPPLFLFLSIAAFALFSLFTR

TRTRPLE - GFP Tag - V

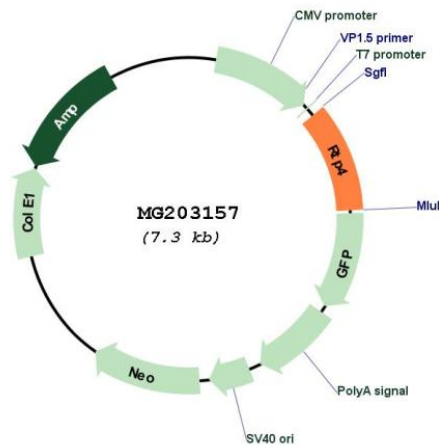
Restriction Sites: SgfI-MluI

Cloning Scheme:

Cloning sites used for ORF Shutting:



Plasmid Map:



ACCN: BC024872

ORF Size: 749 bp

OTI Disclaimer:	The molecular sequence of this clone aligns with the gene accession number as a point of reference only. However, individual transcript sequences of the same gene can differ through naturally occurring variations (e.g. polymorphisms), each with its own valid existence. This clone is substantially in agreement with the reference, but a complete review of all prevailing variants is recommended prior to use. More info
OTI Annotation:	This clone was engineered to express the complete ORF with an expression tag. Expression varies depending on the nature of the gene.
Components:	The ORF clone is ion-exchange column purified and shipped in a 2D barcoded Matrix tube containing 10ug of transfection-ready, dried plasmid DNA (reconstitute with 100 ul of water).
Reconstitution Method:	<ol style="list-style-type: none">1. Centrifuge at 5,000xg for 5min.2. Carefully open the tube and add 100ul of sterile water to dissolve the DNA.3. Close the tube and incubate for 10 minutes at room temperature.4. Briefly vortex the tube and then do a quick spin (less than 5000xg) to concentrate the liquid at the bottom.5. Store the suspended plasmid at -20°C. The DNA is stable for at least one year from date of shipping when stored at -20°C.
RefSeq:	BC024872 , AAH24872
RefSeq Size:	1651 bp
RefSeq ORF:	749 bp
Locus ID:	67775
Cytogenetics:	16 B1
Gene Summary:	Probable chaperone protein which facilitates trafficking and functional cell surface expression of some G-protein coupled receptors (GPCRs). Promotes functional expression of the bitter taste receptor TAS2R16 (By similarity). Also promotes functional expression of the opioid receptor heterodimer OPRD1-OPRM1 (PubMed:18836069).[UniProtKB/Swiss-Prot Function]