

## Product datasheet for **MG203125**

### Zfp637 (BC021601) Mouse Tagged ORF Clone

#### Product data:

**Product Type:** Expression Plasmids  
**Product Name:** Zfp637 (BC021601) Mouse Tagged ORF Clone  
**Tag:** TurboGFP  
**Symbol:** Zfp637  
**Synonyms:** MGC54806  
**Mammalian Cell Selection:** Neomycin  
**Vector:** pCMV6-AC-GFP (PS100010)  
**E. coli Selection:** Ampicillin (100 ug/mL)  
**ORF Nucleotide Sequence:** >MG203125 representing BC021601  
Red=Cloning site Blue=ORF Green=Tags(s)

TTTTGTAATACGACTCACTATAGGGCGGCCGGAATTCGTCGACTGGATCCGGTACCGAGGAGATCTGCC  
GCC**CGATCGCC**

ATGACAGAAGCCACAAGTATGATCCTTCAGAGGCCACAGGATCCTCAAGCTGGGATTTCCAGAGCTCTT  
TCAGAAGAGAGAAGCTGGAACAAAAGTCCCGGAGTCTAAGGCCCTCCAGGAAGACTCACCTGGAGTGAG  
GCAGAAGGTCTATGATTGCCAGGAATGTGGGAAGTCTTCCGGCAGAAAGGGAGCCTAACCTGCACGAG  
AGAATCCACACTGGTCAGAAGCCCTTTGAGTGCACCCAGTGTGGGAAAAGCTTCAGGGCCAAGGGCAACC  
TGTTACACATCAGCGGATCCACACAGGAGAGAAGCCCTATCAGTGCAAAGAGTGTGGGAAAAGCTTCAG  
TCAGCGAGGCAGCCTGGCTGTCCACGAGAGACTCCACACTGGACAGAAACCTACGAGTGTGCCATTTGC  
CAGAGGAGCTTCCGAAATCAAAGTAACCTCGCCGTGCACCGAAGAGTTCACAGCGGTGAGAAGCCCTATA  
GATGCGACCAGTGTGAAAAGCTTTCAGCCAGAAAGGAAGCTTAATTGTGCACATCCGCGTCCACACGGG  
TCTGAAGCCCTACGCGTGTCCACTGCAGGAAGAGCTTCCATACCAGGGGCAACTGTCTCCTGCATGGA  
AAAGTCCACACGGGAGAGACACCCTATCTCTGTGGCCAGTGTGGGAAAAGTTTCACTCAGAGAGGGAGCC  
TGGCTGTGCACCGAAGCTGCTCACAACGGCTCACTCTG

AGCGG**ACCG**ACGCGTACGCGGCCGCTCGAG - GFP Tag - GTTTAA



[View online »](#)

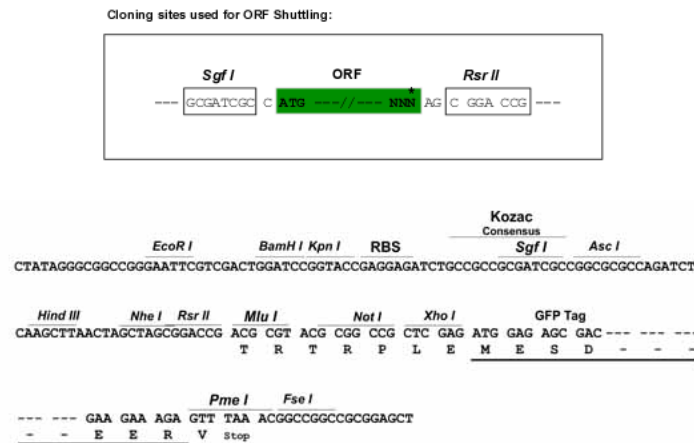
**Protein Sequence:** >MG203125 representing BC021601  
 Red=Cloning site Green=Tags(s)

MTEAHKYDPSEATGSSSWDFQSSFRREKLEQKSPESKALQEDSPGVRQKVYDCQECGKSFQRQKGSLLTHE  
 RIHTGQKPFECTQCGKSFRAKGNLVTHQRIHTGEKPYQCKEKGKSF SQRGSLAVHERLHTGQKPYECAIC  
 QRSFRNQSNLAVHRRVHSGEKPYRCDQCGKAFS QKGS L I VHIRVHTGLKPYACSHCRKSFHTRGNCLLHG  
 KVHTGETPYL CGQCGKSF TQRGSLAVHQRSCSQRLLTL

SGPTRRRLE - GFP Tag - V

**Restriction Sites:** SgfI-RsrII

**Cloning Scheme:**



**ACCN:** BC021601

**ORF Size:** 741 bp

**OTI Disclaimer:** The molecular sequence of this clone aligns with the gene accession number as a point of reference only. However, individual transcript sequences of the same gene can differ through naturally occurring variations (e.g. polymorphisms), each with its own valid existence. This clone is substantially in agreement with the reference, but a complete review of all prevailing variants is recommended prior to use. [More info](#)

**OTI Annotation:** This clone was engineered to express the complete ORF with an expression tag. Expression varies depending on the nature of the gene.

**Components:** The ORF clone is ion-exchange column purified and shipped in a 2D barcoded Matrix tube containing 10ug of transfection-ready, dried plasmid DNA (reconstitute with 100 ul of water).

**Reconstitution Method:**

1. Centrifuge at 5,000xg for 5min.
2. Carefully open the tube and add 100ul of sterile water to dissolve the DNA.
3. Close the tube and incubate for 10 minutes at room temperature.
4. Briefly vortex the tube and then do a quick spin (less than 5000xg) to concentrate the liquid at the bottom.
5. Store the suspended plasmid at -20°C. The DNA is stable for at least one year from date of shipping when stored at -20°C.

**RefSeq:** [BC021601.1](#)

**RefSeq Size:** 1150 bp

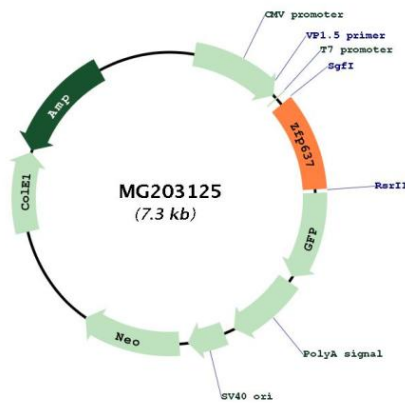
**RefSeq ORF:** 743 bp

**Locus ID:** 232337

**Cytogenetics:** 6 F1

**Gene Summary:** May be involved in transcriptional regulation.[UniProtKB/Swiss-Prot Function]

**Product images:**



Circular map for MG203125