

## Product datasheet for **MG203109**

### Ras11b (NM\_026878) Mouse Tagged ORF Clone

#### Product data:

Product Type:	Expression Plasmids
Product Name:	Ras11b (NM_026878) Mouse Tagged ORF Clone
Tag:	TurboGFP
Symbol:	Ras11b
Synonyms:	1190017B18Rik
Mammalian Cell Selection:	Neomycin
Vector:	pCMV6-AC-GFP (PS100010)
E. coli Selection:	Ampicillin (100 ug/mL)
ORF Nucleotide Sequence:	>MG203109 representing NM_026878 Red=Cloning site Blue=ORF Green=Tags(s)

TTTTGTAATACGACTCACTATAGGGCGGCCGGAATTCGTCGACTGGATCCGGTACCGAGGAGATCTGCC  
GCC**CGATCGCC**

ATGCGCCTCATCCAGAACATGTGTACCATCGCAGAGTACCCCGCCCAGGCAGCACCGCTGCCGACTGCT  
GCCTGGGGGCTGCGGGCCCGGCTCGTTAAGATCGCCGTGGTAGGGCCAGCGGCTGGCAAGACCGC  
TTTGGTGGTCCGATTCTCACTAAACGATTCATCGGGGACTACGAACGAAATGCAGGTAATCTCTACACA  
AGACAAGTTCACATAGAAGGAGAAACGCTGGCTATTCAGGTCCAGGACACTCCGGGCATCCAGGTGCACG  
AGAATGGCTTGAGTTGCAGCGAGCAGTTGAATCGCTGCATTCGCTGGGCAGATGCCGTCTCCTCGTGTT  
CTCCATCAGGACCACAAGAGCTACGAATCATTAGCCAGCTCCACCAGCACGTGCAGCAGCTGCACCCG  
GGCACTCGGCTGCCTGTGGTGTGGTGGCTAACAAAGCTGACCTCCTACACGTAAGCAGGTGGACCCCTC  
AGCTTGGCCTGCAACTGGCCAGCATGCTCGGCTGCTCCTTCTATGAAGTATCTGTGAGTAAAAATTACAA  
CGACGTCTACAATGCTTTCCATGTCTGTGCAAGAAGTGAAGCCCAAGCAGCAGCCAGCAGCACCCCC  
GAGAAACGCAGAACTTCCTCATCCCCAGACCAAGTCGCCCAACATGCAAGACCTGAAGAGGAGGTTTA  
AGCAGGCTCTGTCTGCCAAAGTGAAGACTGTACAGTCCGGT

**ACGCGT**ACGCGGCCGCTCGAG - GFP Tag - GTTTAA



[View online »](#)

**Protein Sequence:** >MG203109 representing NM\_026878  
 Red=Cloning site Green=Tags(s)

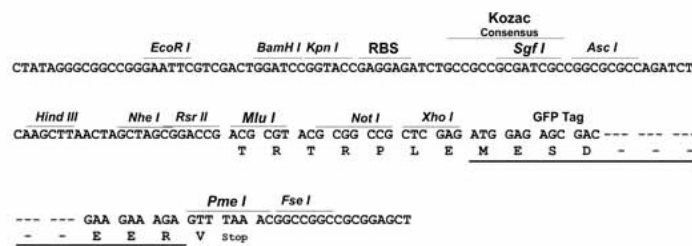
MRLIQNMCTIAEYPAPGSTAADCCGLGAAGRRLVKIAVVGASGVGKTALVVRFLTKRFIGDYERNAGNLYT  
 RQVHIEGETLAIQVQDTPGIQVHENGLSCSEQLNRCIRWADAVLVFSITDHKSYELISQLHQHVQQLHP  
 GTRLPVVLVANKADLLHVKQVDPQLGLQLASMLGCSFYEVSVSENYNDVYNAFHVLCKEVSPKQQPSSTP  
 EKRRTSLIPRPKSPNMQDLKRRFKQALS AKVRTVTSV

TRTRPLE - GFP Tag - V

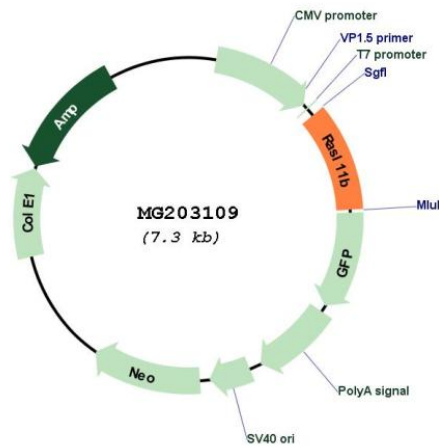
**Restriction Sites:** SgfI-MluI

**Cloning Scheme:**

Cloning sites used for ORF Shutting:



**Plasmid Map:**



**ACCN:** NM\_026878

**ORF Size:** 741 bp

<b>OTI Disclaimer:</b>	The molecular sequence of this clone aligns with the gene accession number as a point of reference only. However, individual transcript sequences of the same gene can differ through naturally occurring variations (e.g. polymorphisms), each with its own valid existence. This clone is substantially in agreement with the reference, but a complete review of all prevailing variants is recommended prior to use. <a href="#">More info</a>
<b>OTI Annotation:</b>	This clone was engineered to express the complete ORF with an expression tag. Expression varies depending on the nature of the gene.
<b>Components:</b>	The ORF clone is ion-exchange column purified and shipped in a 2D barcoded Matrix tube containing 10ug of transfection-ready, dried plasmid DNA (reconstitute with 100 ul of water).
<b>Reconstitution Method:</b>	<ol style="list-style-type: none"><li>1. Centrifuge at 5,000xg for 5min.</li><li>2. Carefully open the tube and add 100ul of sterile water to dissolve the DNA.</li><li>3. Close the tube and incubate for 10 minutes at room temperature.</li><li>4. Briefly vortex the tube and then do a quick spin (less than 5000xg) to concentrate the liquid at the bottom.</li><li>5. Store the suspended plasmid at -20°C. The DNA is stable for at least one year from date of shipping when stored at -20°C.</li></ol>
<b>RefSeq:</b>	<a href="#">NM_026878.1</a> , <a href="#">NP_081154.1</a>
<b>RefSeq Size:</b>	1860 bp
<b>RefSeq ORF:</b>	744 bp
<b>Locus ID:</b>	68939
<b>UniProt ID:</b>	<a href="#">Q922H7</a>
<b>Cytogenetics:</b>	5 C3.3