

Product datasheet for **MG203094**

Ywhah (BC008187) Mouse Tagged ORF Clone

Product data:

Product Type: Expression Plasmids
 Product Name: Ywhah (BC008187) Mouse Tagged ORF Clone
 Tag: TurboGFP
 Symbol: Ywhah
 Mammalian Cell Selection: Neomycin
 Vector: pCMV6-AC-GFP (PS100010)
 E. coli Selection: Ampicillin (100 ug/mL)
 ORF Nucleotide Sequence: >MG203094 representing BC008187
 Red=Cloning site Blue=ORF Green=Tags(s)

TTTTGTAATACGACTCACTATAGGGCGGCCGGGAATTCGTCGACTGGATCCGGTACCGAGGAGATCTGCC
 GCC**CGATCGCC**

ATGGGGGATCGAGAGCAGCTGCTGCAGCGGGCGGACTGGCGGAGCAGGCGGAGCGCTACGACGATATGG
 CCTCCGCCATGAAGGCGGTGACAGAGCTGAATGAACCACTATCTAACGAAGATCGAAATCTCCTCTCTGT
 GGCCTACAAGAAATGTAGTTGGTGCCAGGCGATCTTCTGGAGGGTTATTAGTAGCATTGAGCAGAAAACC
 ATGGCAGATGGGAATGAGAAGAAGTTGGAGAAAGTTAAAGCCTACCGGGAGAAGATTGAAAAGAGCTGG
 AGACAGTTTGCAATGATGCTTTGGCTCTGCTTGACAAGTTCCCTTATCAAGAACTGCAATGATTTTCAGTA
 TGAGAGCAAGGTGTTCTACCTGAAAATGAAGGGCGATTACTACCGCTACCTGGCAGAGGTGGCTTCTGGG
 GAGAAGAAAAACAGTGTGGTTGAAGCTTCTGAGGCCGCGTATAAGGAAGCCTTCGAAATCAGCAAAGAGC
 ACATGCAGCCAACACACCCCATCCGGCTTGGCCTGGCCCTCAATTTTTCTGTGTTCTACTATGAGATCCA
 GAATGCACCAGAGCAAGCCTGCCTCTTAGCCAAACAAGCCTTCGATGATGCTATAGCTGAGCTGGACACA
 TTAACGAGGATTCCTATAAGGACTCCACTCTCATGCAGTTGCTGCGAGACAACCTCACCTCTGGA
 CGAGCGACCAGCAGGATGAAGAAGCAGGAGAAGGCAAC

ACGCGTACGCGGCCGCTCGAG - GFP Tag - GTTTAA

Protein Sequence: >MG203094 representing BC008187
 Red=Cloning site Green=Tags(s)

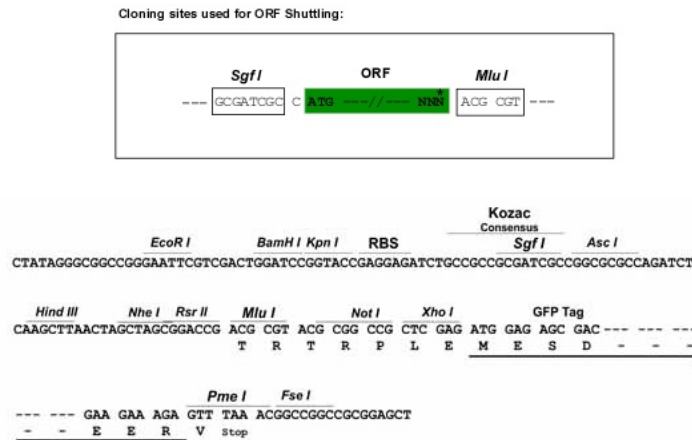
MGDREQLLQRARLAEQAERYDDMASAMKAVTELNEPLSNEDRNLLSVAYKNVVGARRSSWRVISSIEQKT
 MADGNEKKLEKVKAYREIEKELETVCNDVLLALLDKFLIKNCNDFQYESKVFYLMKMGDYRYLAEVASG
 EKKNSVVEASEAAYKEAFEISKEHMQPTHPIRLGLALNFSVFYIEIQNAPEQAQLLAKQAFDDAIAELDT
 LNEDSYKDSTLIMQLLRDNLTLWTSQQDEEAGEGN

TRTRPLE - GFP Tag - V

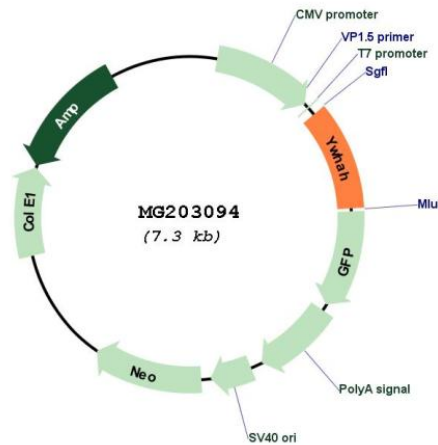


Restriction Sites: SgfI-MluI

Cloning Scheme:



Plasmid Map:



ACCN: BC008187

ORF Size: 740 bp

OTI Disclaimer: The molecular sequence of this clone aligns with the gene accession number as a point of reference only. However, individual transcript sequences of the same gene can differ through naturally occurring variations (e.g. polymorphisms), each with its own valid existence. This clone is substantially in agreement with the reference, but a complete review of all prevailing variants is recommended prior to use. [More info](#)

OTI Annotation: This clone was engineered to express the complete ORF with an expression tag. Expression varies depending on the nature of the gene.

Components:	The ORF clone is ion-exchange column purified and shipped in a 2D barcoded Matrix tube containing 10ug of transfection-ready, dried plasmid DNA (reconstitute with 100 ul of water).
Reconstitution Method:	<ol style="list-style-type: none">1. Centrifuge at 5,000xg for 5min.2. Carefully open the tube and add 100ul of sterile water to dissolve the DNA.3. Close the tube and incubate for 10 minutes at room temperature.4. Briefly vortex the tube and then do a quick spin (less than 5000xg) to concentrate the liquid at the bottom.5. Store the suspended plasmid at -20°C. The DNA is stable for at least one year from date of shipping when stored at -20°C.
RefSeq:	<u>BC008187</u> , <u>AAH08187</u>
RefSeq Size:	1668 bp
RefSeq ORF:	740 bp
Locus ID:	22629
Cytogenetics:	5 B1
Gene Summary:	Adapter protein implicated in the regulation of a large spectrum of both general and specialized signaling pathways. Binds to a large number of partners, usually by recognition of a phosphoserine or phosphothreonine motif. Binding generally results in the modulation of the activity of the binding partner. Negatively regulates the kinase activity of PDPK1 (By similarity).[UniProtKB/Swiss-Prot Function]