

## Product datasheet for **MG203060**

### Cnpy4 (NM\_178612) Mouse Tagged ORF Clone

#### Product data:

Product Type:	Expression Plasmids
Product Name:	Cnpy4 (NM_178612) Mouse Tagged ORF Clone
Tag:	TurboGFP
Symbol:	Cnpy4
Synonyms:	2610019P18Rik
Mammalian Cell Selection:	Neomycin
Vector:	pCMV6-AC-GFP (PS100010)
E. coli Selection:	Ampicillin (100 ug/mL)
ORF Nucleotide Sequence:	>MG203060 representing NM_178612 Red=Cloning site Blue=ORF Green=Tags(s)

TTTTGTAATACGACTCACTATAGGGCGCCGGGAATTCGTCGACTGGATCCGGTACCGAGGAGATCTGCC  
GCC**CGATCGCC**

ATGTGTGGACTGCGTTTTATCATGGACCTGTGCGGCTGGAGATACTGCTTTTCATCCTGGCAGCGTACG  
GTGCTTGGGCTGAGGGCACAAAAGAGGAGGAAGATGACACAGAACGTTTGCCAGCAAATGCGAAGTGTG  
TAAGCTGCTGAGCATGGAGCTCCAGGAAGCGTTGAGTCGAACTGGCCGATCCCGAGAAGTCTGGAGCTG  
GGTCAGGTGCTAGACACTGGCAAGAGGAAGAGACACGTGCCTTACAGCCTCTCTGAGACGCGGCTAGAAG  
AGGCTTTGGAGAATTTGTGCGAGCGGATCCTGGATTACAATGTTTCATGCTGAACGCAAGGGCTCACTAAG  
ATACGCCAAGGGTCAAAGTCAGACTATGGCAACTGAAAGGCCTGGTCCAGAAGGGAGTAAAAGTGGAT  
CTGGGAATCCCTTTGGAGCTGTGGGACGAGCCAGTGTGGAGGTCACATTCTCAAGAAGCAGTGTGAGA  
CGATGCTGGAGGAGTTTGAAGATGTTGTAGGGGACTGGTACTTCCACCATCAGGAGCAGCCCTCCAGCA  
TTTTCTCTGTGAGCGGCATGTGCTTCCAGCCTCTGAAACTGCTTGTCTACGGGAAGCTTGGACTGGAAG  
GAGAAGATCAGTGATGGCAGGAGGAGGAGATGACGAAGAGGAGGAAGAAGAAGAAGAGATAACCAAGA  
CTTCAGGCAATCCAAGCATGACCCAGAAGATCTT

**ACGCGT**ACGCGGCCGCTCGAG - GFP Tag - GTTTAA



[View online »](#)

**Protein Sequence:** >MG203060 representing NM\_178612  
 Red=Cloning site Green=Tags(s)

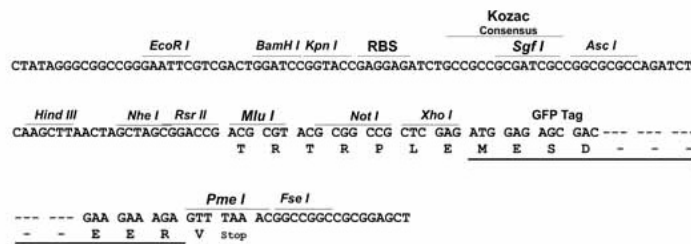
MCGLRFIMGPVRLLEILLFILAAYGAWAEATKEEEDDTERLPSKCEVCKLLSMELQEALSR TGRSREVLEL  
 GQVLDTGKRKRHPYSLSETRLEEALENLCERILDYNVHAERKGSRLRYAKGQSQTMATL KGLVQKGVKVD  
 LGIPLLELWDEPSVEVTFLLKKQCETMLEEFEDVVDWYFHHQEQLQHFLCERHVLPASETAC LREAWTGK  
 EKISDQGEEADDEEEEEEEITKTSGNPKHDPEDL

TRTRPLE - GFP Tag - V

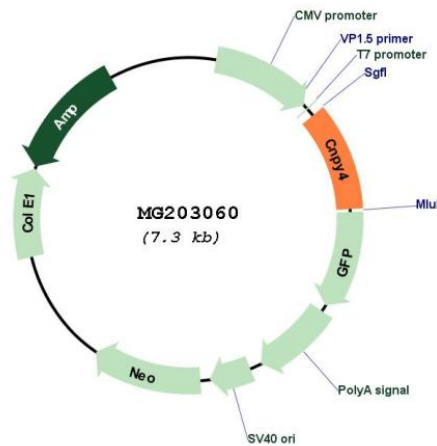
**Restriction Sites:** Sgfl-MluI

**Cloning Scheme:**

Cloning sites used for ORF Shutting:



**Plasmid Map:**



**ACCN:** NM\_178612

**ORF Size:** 735 bp

<b>OTI Disclaimer:</b>	The molecular sequence of this clone aligns with the gene accession number as a point of reference only. However, individual transcript sequences of the same gene can differ through naturally occurring variations (e.g. polymorphisms), each with its own valid existence. This clone is substantially in agreement with the reference, but a complete review of all prevailing variants is recommended prior to use. <a href="#">More info</a>
<b>OTI Annotation:</b>	This clone was engineered to express the complete ORF with an expression tag. Expression varies depending on the nature of the gene.
<b>Components:</b>	The ORF clone is ion-exchange column purified and shipped in a 2D barcoded Matrix tube containing 10ug of transfection-ready, dried plasmid DNA (reconstitute with 100 ul of water).
<b>Reconstitution Method:</b>	<ol style="list-style-type: none"><li>1. Centrifuge at 5,000xg for 5min.</li><li>2. Carefully open the tube and add 100ul of sterile water to dissolve the DNA.</li><li>3. Close the tube and incubate for 10 minutes at room temperature.</li><li>4. Briefly vortex the tube and then do a quick spin (less than 5000xg) to concentrate the liquid at the bottom.</li><li>5. Store the suspended plasmid at -20°C. The DNA is stable for at least one year from date of shipping when stored at -20°C.</li></ol>
<b>RefSeq:</b>	<a href="#">NM_178612.4</a> , <a href="#">NP_848727.1</a>
<b>RefSeq Size:</b>	1958 bp
<b>RefSeq ORF:</b>	738 bp
<b>Locus ID:</b>	66455
<b>UniProt ID:</b>	<a href="#">Q8BQ47</a>
<b>Cytogenetics:</b>	5 G2
<b>Gene Summary:</b>	Plays a role in the regulation of the cell surface expression of TLR4.[UniProtKB/Swiss-Prot Function]