

## Product datasheet for **MG203028**

### Med19 (NM\_025885) Mouse Tagged ORF Clone

#### Product data:

**Product Type:** Expression Plasmids  
**Product Name:** Med19 (NM\_025885) Mouse Tagged ORF Clone  
**Tag:** TurboGFP  
**Symbol:** Med19  
**Synonyms:** 2410018M14Rik; 3110040A13Rik; LCMR1  
**Mammalian Cell Selection:** Neomycin  
**Vector:** pCMV6-AC-GFP (PS100010)  
**E. coli Selection:** Ampicillin (100 ug/mL)  
**ORF Nucleotide Sequence:** >MG203028 representing NM\_025885  
Red=Cloning site Blue=ORF Green=Tags(s)

TTTTGTAATACGACTCACTATAGGGCGCCGGGAATTCGTCGACTGGATCCGGTACCGAGGAGATCTGCC  
GCC**CGATCGCC**

ATGGAGAACTTCACGGCACTGTTTGGAGCTCAGACTGACCCCCACCGCCACCAAGCGCCCTAGGCTTTG  
GGCCTGGAAGCCACCCCGCCACCCCTCCTCCTCCGGGAGGTGGTCCAGGGCAGCCCCGCCCTCGAC  
GGCAACCTCGGCCCGCAGGAGCGGATAAGTCGACGGCTGGAAGTGCCCTTCTACCTGATCGGGAA  
TTGCCAGGCAGCAGAGCTGACGGGCAGACCAATTTAATCACACACTACAACCTGGAGCAGGCCTATA  
ATAAGTTCTGTGGGAAGAAAGTGAAGGAGAAGCTAAGTAACTTCTGCTGACCTGCCAGGGATGATTGA  
TCTCCCTGGCTCTCATGACAACAGCAGCCTCCGATCCCTCATTGAGAAGCCTCCTATTCTTGGTGGCTCT  
TTAATCCAATCACAGGGACCATGCTGTCTGGTTTCCGCCTCCACACTGGCCCGTTGCCAGAGCAGTGTC  
GTCTGATGCATATTCAGCCACCCAAGAAGAAGAAATAAGCATAAGCACAAACAGAGCCGCCACCCAGGATCC  
TGTTCCCCCAGAAACACCATCTGATTGATCACAAGAAGAAGAAAAAGAAGAAAGAGGAGGATCCTGAA  
CGAAAAAGGAAGAAGAAAGAAAGAAGAAGAAGAACCGACATAGTCCAGACCACCCAGGTATGGGCA  
GCTCTCAAGCCAGCAGCAGCAGCAGCCTCCGC

**ACGCGT**ACGCGGCCGCTCGAG - GFP Tag - GTTTAA



[View online »](#)

**Protein Sequence:** >MG203028 representing NM\_025885  
 Red=Cloning site Green=Tags(s)

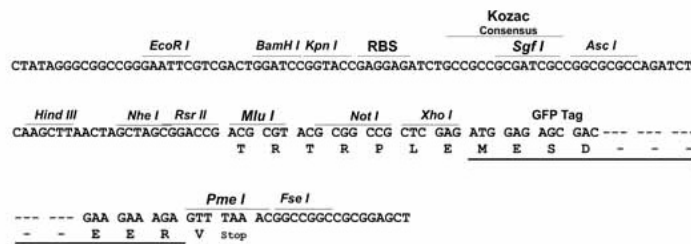
MENFTALFGAQTDP PPPPSALGF GPKPPPPPPPPGGGPGAAPPSTATSAPAGADKSTAGSGPFYLMRE  
 LPGSTELTGSTNLI THYNLEQAYNKFCGKVKYKELSNFLPDLPGMIDLPGSHDNSSLRSLIEKPPILGGS  
 FNPITGTL SGFRLHTGPLPEQCRLMHIQPPKKNKHKHKQSRTQDPVPPETP SDSDHKKKKKKKEEDPE  
 RKRRKKKKKKKKNRHSPDHGPMGSSQASSSSSLR

TRTRPLE - GFP Tag - V

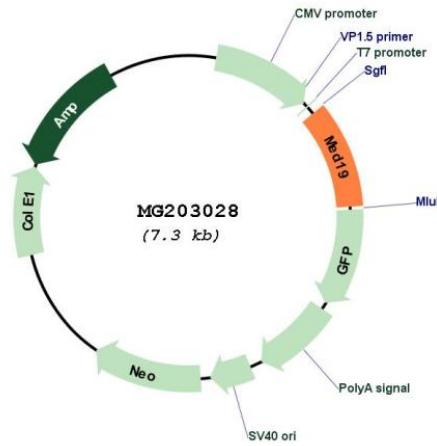
**Restriction Sites:** SgfI-MluI

**Cloning Scheme:**

Cloning sites used for ORF Shutting:



**Plasmid Map:**



**ACCN:** NM\_025885

**ORF Size:** 732 bp

<b>OTI Disclaimer:</b>	The molecular sequence of this clone aligns with the gene accession number as a point of reference only. However, individual transcript sequences of the same gene can differ through naturally occurring variations (e.g. polymorphisms), each with its own valid existence. This clone is substantially in agreement with the reference, but a complete review of all prevailing variants is recommended prior to use. <a href="#">More info</a>
<b>OTI Annotation:</b>	This clone was engineered to express the complete ORF with an expression tag. Expression varies depending on the nature of the gene.
<b>Components:</b>	The ORF clone is ion-exchange column purified and shipped in a 2D barcoded Matrix tube containing 10ug of transfection-ready, dried plasmid DNA (reconstitute with 100 ul of water).
<b>Reconstitution Method:</b>	<ol style="list-style-type: none"><li>1. Centrifuge at 5,000xg for 5min.</li><li>2. Carefully open the tube and add 100ul of sterile water to dissolve the DNA.</li><li>3. Close the tube and incubate for 10 minutes at room temperature.</li><li>4. Briefly vortex the tube and then do a quick spin (less than 5000xg) to concentrate the liquid at the bottom.</li><li>5. Store the suspended plasmid at -20°C. The DNA is stable for at least one year from date of shipping when stored at -20°C.</li></ol>
<b>RefSeq:</b>	<a href="#">NM_025885.3</a>
<b>RefSeq Size:</b>	2036 bp
<b>RefSeq ORF:</b>	735 bp
<b>Locus ID:</b>	381379
<b>UniProt ID:</b>	<a href="#">Q8C1S0</a>
<b>Cytogenetics:</b>	2 D
<b>Gene Summary:</b>	Component of the Mediator complex, a coactivator involved in the regulated transcription of nearly all RNA polymerase II-dependent genes. Mediator functions as a bridge to convey information from gene-specific regulatory proteins to the basal RNA polymerase II transcription machinery. Mediator is recruited to promoters by direct interactions with regulatory proteins and serves as a scaffold for the assembly of a functional preinitiation complex with RNA polymerase II and the general transcription factors (By similarity). [UniProtKB/Swiss-Prot Function]