

## Product datasheet for **MG203016**

### Tpk1 (NM\_013861) Mouse Tagged ORF Clone

#### Product data:

**Product Type:** Expression Plasmids  
**Product Name:** Tpk1 (NM\_013861) Mouse Tagged ORF Clone  
**Tag:** TurboGFP  
**Symbol:** Tpk1  
**Mammalian Cell Selection:** Neomycin  
**Vector:** pCMV6-AC-GFP (PS100010)  
**E. coli Selection:** Ampicillin (100 ug/mL)  
**ORF Nucleotide Sequence:** >MG203016 representing NM\_013861  
Red=Cloning site Blue=ORF Green=Tags(s)

TTTTGTAATACGACTCACTATAGGGCGGCCGGGAATTCGTCGACTGGATCCGGTACCGAGGAGATCTGCC  
GCCGCGATCGCC

ATGGAGCATGCCTTTACCCCGTTGGAACCCCTGCTACCTACGGGGAACCTGAAATACTGCCTTGTGGTTC  
 TTAATCAGCCTTTGGATGCACGATTTCCGCATCTTTGGAAAAAGCTCTCTTAAGAGCCTGTGCTGATGG  
 GGGTGCCAACCACTTATATGATCTCACTGAAGGAGAGAGAAAAGCTTCTTGCTGAATTCGTCAGTGGG  
 GACTTTGATTCTATTAGGCCTGAAGTCAAAGAGTACTACACCAAGAAGGGCTGTGATCTTATTTCAACT  
 CTGACCAAGACCACACTGACTTTACCAAGTGTCTTCAAGTCTCAAAGGAAGATAGAGGAAAAGGAAT  
 GCAGGTTGACGTATTGTGACACTGGGAGGTCTCGGTGGGCGTTTTGACCAAATCATGGCCTCTGTGAAT  
 ACCCTTTTCCAAGCCACTCACATCACTCCTGTGCCGATTATAATAATCCAAAAGGACTCTCTCATCTACC  
 TCCTCCAACCCGGGAAGCACAGGCTCCATGTAGACACTGGAATGGAAGGGAGCTGGTGTGGCCTGATTCC  
 TGTTGGACAGCCTTGCAACCAGGTGACGACAACAGGCCTGAAATGGAACCTCACAAATGATGTTCTTGGC  
 TTTGGAACACTGGTCAGTACTTCTAACACCTACGATGGGTCCGGCCTTGTCACTGTGAAACTGACCACC  
 CACTCCTCTGGACCATGGCCATCAAGAGC

ACGCGTACGCGGCCGCTCGAG - GFP Tag - GTTTAA

**Protein Sequence:** >MG203016 representing NM\_013861  
Red=Cloning site Green=Tags(s)

MEHAFTPLEPLPTGNLKYCLVVLNQPLDARFRHLWKKALLRACADGGANHLYDLTEGERESFLPEFVSG  
 DFDSIRPEVKEYYTKKGCGLISTPDQDHTDFTKCLQVLQRKIEEKELQVDVIVTLGGLGGRFDQIMASVN  
 TLFQATHITPVPPIIIIQKDSLIIYLLQPGKHRLHVDTGMEGSWCGLIPVQPCNQVTTTGLKWNLTNDVLG  
 FGLTVSTNNTYDGSGLVTVDHPLLWTMAIKS

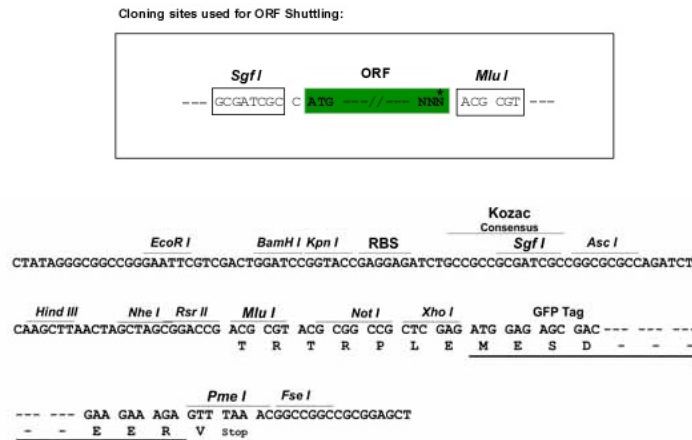
TRTRPLE - GFP Tag - V



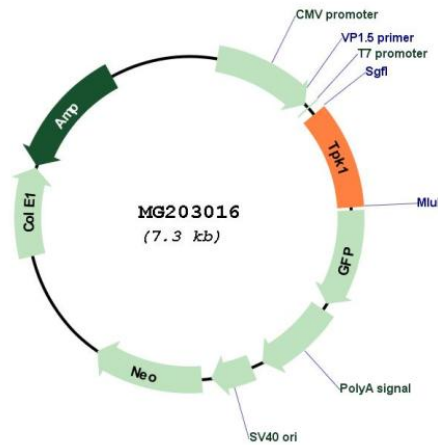
[View online »](#)

Restriction Sites: SgfI-MluI

Cloning Scheme:



Plasmid Map:



ACCN: NM\_013861

ORF Size: 729 bp

OTI Disclaimer: The molecular sequence of this clone aligns with the gene accession number as a point of reference only. However, individual transcript sequences of the same gene can differ through naturally occurring variations (e.g. polymorphisms), each with its own valid existence. This clone is substantially in agreement with the reference, but a complete review of all prevailing variants is recommended prior to use. [More info](#)

OTI Annotation: This clone was engineered to express the complete ORF with an expression tag. Expression varies depending on the nature of the gene.

<b>Components:</b>	The ORF clone is ion-exchange column purified and shipped in a 2D barcoded Matrix tube containing 10ug of transfection-ready, dried plasmid DNA (reconstitute with 100 ul of water).
<b>Reconstitution Method:</b>	<ol style="list-style-type: none"><li>1. Centrifuge at 5,000xg for 5min.</li><li>2. Carefully open the tube and add 100ul of sterile water to dissolve the DNA.</li><li>3. Close the tube and incubate for 10 minutes at room temperature.</li><li>4. Briefly vortex the tube and then do a quick spin (less than 5000xg) to concentrate the liquid at the bottom.</li><li>5. Store the suspended plasmid at -20°C. The DNA is stable for at least one year from date of shipping when stored at -20°C.</li></ol>
<b>RefSeq:</b>	<a href="#">NM_013861.4</a>
<b>RefSeq Size:</b>	2563 bp
<b>RefSeq ORF:</b>	732 bp
<b>Locus ID:</b>	29807
<b>UniProt ID:</b>	<a href="#">Q9R0M5</a>
<b>Cytogenetics:</b>	6 B2.1
<b>Gene Summary:</b>	Catalyzes the phosphorylation of thiamine to thiamine pyrophosphate. Can also catalyze the phosphorylation of pyrithiamine to pyrithiamine pyrophosphate.[UniProtKB/Swiss-Prot Function]