

Product datasheet for **MG203010**

Rtl6 (NM_177630) Mouse Tagged ORF Clone

Product data:

Product Type: Expression Plasmids
Product Name: Rtl6 (NM_177630) Mouse Tagged ORF Clone
Tag: TurboGFP
Symbol: Rtl6
Synonyms: BC058638; Ldoc1l; Mar6; Mart6
Mammalian Cell Selection: Neomycin
Vector: pCMV6-AC-GFP (PS100010)
E. coli Selection: Ampicillin (100 ug/mL)
ORF Nucleotide Sequence: >MG203010 representing NM_177630
Red=Cloning site Blue=ORF Green=Tags(s)

TTTTGTAATACGACTCACTATAGGGCGCCGGGAATTCGTCGACTGGATCCGGTACCGAGGAGATCTGCC
GCC**CGATCGCC**

ATGGTCCAACCTCGGACCTCCAAAAGTAAAGCCAGCCTCTGCCCTGGTGCCAGCGCTCAGATGGATG
ACGTAGTTGACACCCTGACCTCTCTGCGCCTCACCAACTCCGCGCTGAGGCGGAGGCCTCCACTGAG
GGCGGAGAAGGCCAACCTCACCAACATGCTGGAGAGTGTGATGGCCGAACAACTCTGCTGCGCACCCGA
GCGCGCATCCCTGGCGCTCTACAGATTACTCCACCTATCTCTGCCATCACCTCCAATGGACCCGACCCA
TGACCACGCCACCACCTCACTGCCTGAACCTTCTCAGGAGACCCTGGACAGTTGGCAGGGTTCTGAT
GCAGATGGACAGGTTTCATGATTTTTCAAGCCTCCCGCTTCCCGGTGAAGCCGAGAGAGTGGCCTTCTCT
GTATCCCGTCTGACTGGGAGGGCGAGAAGTGGGCCATCCCCACATGCAACCAGACAGCCCTTTGCGAA
ACAATTACCAGGGGTTTCTGGCTGAGCTCCGCAGAACCTACAAGTCCCGCTGAGGCACTCAAGGCGAGC
ACAAATCCGGAAGACATCCGCGTCCAATAGGGCTGTGCGGGAGCGAGAGCGGGAGCGCCAGATGTTGTGT
CGCCAATGGCCGAGCTGGCACAGGATCCTGCCCGTGCATCCAGCCTCCAACGGGACCAATCCCGCAC
CAGCCTTGCCCTCTCGTGGCCGGAACCTT

ACGCGTACGCGGCCGCTCGAG - GFP Tag - GTTTAA



[View online »](#)

Protein Sequence: >MG203010 representing NM_177630
Red=Cloning site Green=Tags(s)

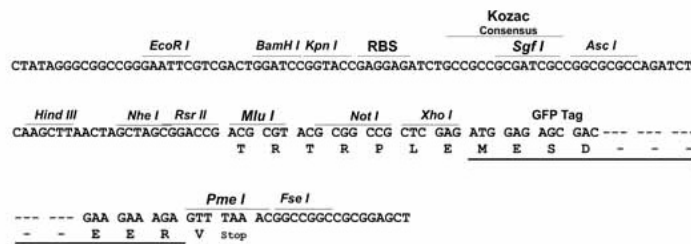
MVQPRTSKTESPASAPGASQAQMDVVDTLTSRLTNSALRREASTLRAEKANLTNMLESVMAELTLLRTR
 ARIPGALQITPPISAITSNTRPMTTPTSLPEPFGDGPQLAGFLMQMDRFMIFQASRFPGEAERVAFL
 VSRLTGEAEKWAIPHMQPDSPLRNNYQGF LAELRRTYKSPLRHSRRAQIRKTSASNRAVRERERERQMLC
 RQLAAAGTGSCPVHPASNGTNPAPALPSRGRNL

TRTRPLE - GFP Tag - V

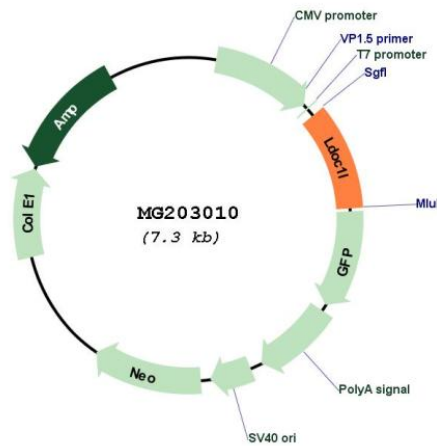
Restriction Sites: SgfI-MluI

Cloning Scheme:

Cloning sites used for ORF Shutting:



Plasmid Map:



ACCN: NM_177630

ORF Size: 729 bp

OTI Disclaimer:	The molecular sequence of this clone aligns with the gene accession number as a point of reference only. However, individual transcript sequences of the same gene can differ through naturally occurring variations (e.g. polymorphisms), each with its own valid existence. This clone is substantially in agreement with the reference, but a complete review of all prevailing variants is recommended prior to use. More info
OTI Annotation:	This clone was engineered to express the complete ORF with an expression tag. Expression varies depending on the nature of the gene.
Components:	The ORF clone is ion-exchange column purified and shipped in a 2D barcoded Matrix tube containing 10ug of transfection-ready, dried plasmid DNA (reconstitute with 100 ul of water).
Reconstitution Method:	<ol style="list-style-type: none">1. Centrifuge at 5,000xg for 5min.2. Carefully open the tube and add 100ul of sterile water to dissolve the DNA.3. Close the tube and incubate for 10 minutes at room temperature.4. Briefly vortex the tube and then do a quick spin (less than 5000xg) to concentrate the liquid at the bottom.5. Store the suspended plasmid at -20°C. The DNA is stable for at least one year from date of shipping when stored at -20°C.
RefSeq:	NM_177630.4
RefSeq Size:	4447 bp
RefSeq ORF:	732 bp
Locus ID:	223732
UniProt ID:	Q505G4
Cytogenetics:	15 E2