

Product datasheet for **MG202966**

Efhd1 (NM_028889) Mouse Tagged ORF Clone

Product data:

Product Type: Expression Plasmids
Product Name: Efhd1 (NM_028889) Mouse Tagged ORF Clone
Tag: TurboGFP
Symbol: Efhd1
Synonyms: 4931430I01Rik; AI452351; mitocalcin; PP3051
Mammalian Cell Selection: Neomycin
Vector: pCMV6-AC-GFP (PS100010)
E. coli Selection: Ampicillin (100 ug/mL)
ORF Nucleotide Sequence: >MG202966 representing NM_028889
Red=Cloning site Blue=ORF Green=Tags(s)

TTTTGTAATACGACTCACTATAGGGCGCCGGGAATTCGTCGACTGGATCCGGTACCGAGGAGATCTGCC
GCC**CGATCGCC**

ATGTCCAGCGAGGAGCTGGCCTGCAAGCTGCAGCGCCGGTTGAGACTTGAGGTGCGGGCAGAGACCGACC
AGGGCGACCCAGCCTGCACCCTGCGATGCCCGAGCCGGGCACCCGGAGCCTGAACCGCCTGCCCGGGC
GCCACAGCCAGCGGGACTCCGAACCTGAACCTCAAGCTGAGCCGAGGCTGGACATCCACCAGGGTACA
GCGCGCCGGCCGCTCTAAGGTCTTCAATCCCTACACCGAGTCCCGGAGTTCAGCCGCCGCTCTCTGA
AGGATCTGGAGAAGATGTTCAAACGTATGATGCTGGAAGGGACGGCTTTATCGACTGATGGAGCTGAA
ACTCATGATGGAGAACTGGGGGCCCTCAGACCCACCTGGGCCTGAAGAGCATGATCAAGGAGGTGGAT
GAGGACTTCGACGGGAAGCTCAGCTTCCGGGAGTTCCTGCTCATTTCACAAGGCTGCTGCTGGTGGAGC
TGCAGGAGGACAGTGGGTTGCTGGCACTGGCCAAGTTTTCCGAGATTGATGTCGCCCTGGAAGGTGTGAG
AGGTGCCAAGAAGCTTCTCGAAGCCAAGGCCAGGCCCTTGTCATGTTCCAGTAAGTTCGAAGCTGAGTTA
AAAGCTGAGCAAGAAGAGCGGAAACGGGAGGAGGAGGCCCGGAGGCTCCGCCAGGCAGCCTTCGGGAGC
TCAAGGCAGCTTTCAGCGCG

ACGCGTACGCGGCCGCTCGAG - GFP Tag - GTTTAA



[View online »](#)

Protein Sequence: >MG202966 representing NM_028889
 Red=Cloning site Green=Tags(s)

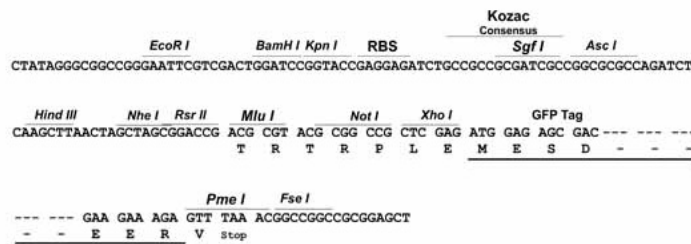
MSSEELACKLQRRRLRLEVRAETDQGDQPAPCDAPAGHPEPEPPARAPTASADSELNLKLSRRLDIHQGT
 ARPGRSKVFNPYTEFPEFSRRLKLDLEKMFKTYDAGRDFIDLMEKLMMEKLGAPQTHLGLKSMIKEVD
 EDFDGLKSFREFLLIFHKAAGELQEDSGLLALAKFSEIDVALEGVRGAKNFFEAQAQALSCSSKFEAEL
 KAEQEERKREEEARLRQAARFRELKAAFSA

TRTRPLE - GFP Tag - V

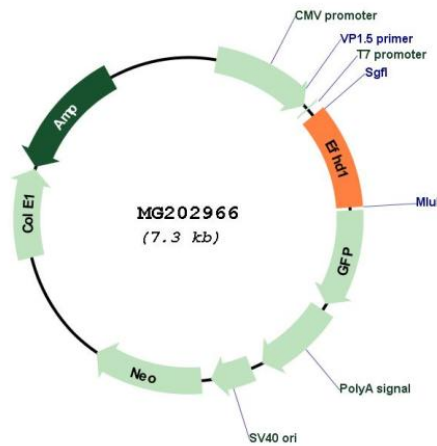
Restriction Sites: SgfI-MluI

Cloning Scheme:

Cloning sites used for ORF Shutting:



Plasmid Map:



ACCN: NM_028889

ORF Size: 720 bp

OTI Disclaimer:	The molecular sequence of this clone aligns with the gene accession number as a point of reference only. However, individual transcript sequences of the same gene can differ through naturally occurring variations (e.g. polymorphisms), each with its own valid existence. This clone is substantially in agreement with the reference, but a complete review of all prevailing variants is recommended prior to use. More info
OTI Annotation:	This clone was engineered to express the complete ORF with an expression tag. Expression varies depending on the nature of the gene.
Components:	The ORF clone is ion-exchange column purified and shipped in a 2D barcoded Matrix tube containing 10ug of transfection-ready, dried plasmid DNA (reconstitute with 100 ul of water).
Reconstitution Method:	<ol style="list-style-type: none">1. Centrifuge at 5,000xg for 5min.2. Carefully open the tube and add 100ul of sterile water to dissolve the DNA.3. Close the tube and incubate for 10 minutes at room temperature.4. Briefly vortex the tube and then do a quick spin (less than 5000xg) to concentrate the liquid at the bottom.5. Store the suspended plasmid at -20°C. The DNA is stable for at least one year from date of shipping when stored at -20°C.
RefSeq:	NM_028889.2 , NP_083165.1
RefSeq Size:	1805 bp
RefSeq ORF:	723 bp
Locus ID:	98363
UniProt ID:	Q9D4J1
Cytogenetics:	1 C5
Gene Summary:	Acts as a calcium sensor for mitochondrial flash (mitoflash) activation, an event characterized by stochastic bursts of superoxide production (By similarity). May play a role in neuronal differentiation (PubMed:16336229).[UniProtKB/Swiss-Prot Function]