

Product datasheet for **MG202957**

1700021F05Rik (NM_026411) Mouse Tagged ORF Clone

Product data:

Product Type: Expression Plasmids
Tag: TurboGFP
Symbol: 1700021F05Rik
Mammalian Cell Selection: Neomycin
Vector: pCMV6-AC-GFP (PS100010)
E. coli Selection: Ampicillin (100 ug/mL)

ORF Nucleotide Sequence: >MG202957 representing NM_026411
Red=Cloning site Blue=ORF Green=Tags(s)

TTTTGTAATACGACTCACTATAGGGCGGCCGGAATTCGTCGACTGGATCCGGTACCGAGGAGATCTGCC
GCC**CGATCGCC**

ATGGCCGTGCCTGGTGTCTCAGACTGCTCACAGGTGCTCTAAGGAAGCCAGATGCCTGGACCAGACTCTGGG
GTGTGATTCAGGGACATCGTCACACAACTTTGTGCTTCCTGGAACCGATACTGTATTTTCCAGTAC
CAAGTTAAACACATCAAATTATAAAACACTTTTCCGTAACATTTTCTCTGCGACTCCAGAGCTTTTA
GTATCTCCAGAATGTTATTTTCCATTTTCTATACGACTCAAAGCAATATAAACTCCAAAAATCTACGA
AAAAGACCTGCAAAAAGAGGCAGACGAAGAGGACTCCGACGAGGAGACCAGTTACCCGAGAGGAGCGA
GCAGGAGGAGGAGCTTGAGAGTGAGCCTGGTGTGGCAAGGACTACAAAGACCTGAAAAGGTGGTGCAG
TCTTTCCGGTACGACGTATCCTGAAGACGGCCTTGACGTGGGGAGAAACAAAGTAGAAGATGCATTCT
ACAAAGGTGAACTCAGACTGAATGGGAGAAGTTGTGGAAGAAAAGCAGAACGGTGAAGGTGGGAGATC
CTTGGATCTCATCACTGGAGAGAACAAGAGACAGGAACAGAGGTGGTGTGCGAATTCTCTGAAAAG
GTCTATGAAGAGAAGACTGAGAACGACAAGCACCAGGTTGGTGTGCGCCGATGGAAGAGCTTAAAGCTGC
CTAAAAAGACTCTGTCTAAA

ACGCGTACGCGGCCGCTCGAG - GFP Tag - GTTTAA

Protein Sequence: >MG202957 representing NM_026411
Red=Cloning site Green=Tags(s)

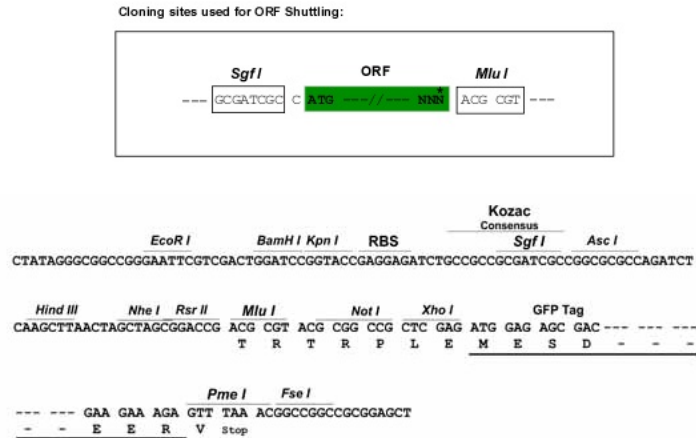
MAVPGVRLLTGALRKPDAWTRLWGVIQGTSSHKLCAWNRYLFSSTKLNTSNYKTLFRNIFSLRPELL
VSPCYFPFSIRLKSINSKKSTKTLQKEADEEDSDEETSYPERSEQEELESEPGVAKDYKDLKVVQ
SFRYDVIKLTGLDVGRNKVEDAFYKGLRLNGEKLWKSRTVKVGDLDLITGENKETGTEVVMRILLKK
VYEKTENDKHRVLRWVSLKLPKKTLSK

TRTRPLE - GFP Tag - V



Restriction Sites: SgfI-MluI

Cloning Scheme:



ACCN: NM_026411

ORF Size: 720 bp

OTI Disclaimer: The molecular sequence of this clone aligns with the gene accession number as a point of reference only. However, individual transcript sequences of the same gene can differ through naturally occurring variations (e.g. polymorphisms), each with its own valid existence. This clone is substantially in agreement with the reference, but a complete review of all prevailing variants is recommended prior to use. [More info](#)

OTI Annotation: This clone was engineered to express the complete ORF with an expression tag. Expression varies depending on the nature of the gene.

Components: The ORF clone is ion-exchange column purified and shipped in a 2D barcoded Matrix tube containing 10ug of transfection-ready, dried plasmid DNA (reconstitute with 100 ul of water).

Reconstitution Method:

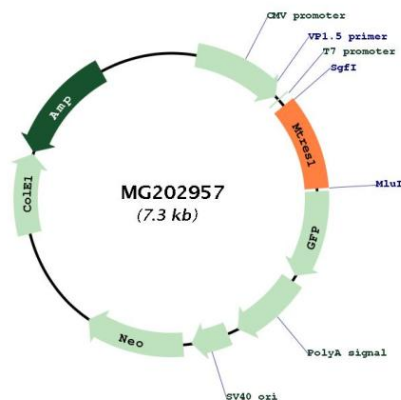
1. Centrifuge at 5,000xg for 5min.
2. Carefully open the tube and add 100ul of sterile water to dissolve the DNA.
3. Close the tube and incubate for 10 minutes at room temperature.
4. Briefly vortex the tube and then do a quick spin (less than 5000xg) to concentrate the liquid at the bottom.
5. Store the suspended plasmid at -20°C. The DNA is stable for at least one year from date of shipping when stored at -20°C.

Note: Plasmids are not sterile. For experiments where strict sterility is required, filtration with 0.22um filter is required.

RefSeq:	NM_026411.2
RefSeq Size:	898 bp
RefSeq ORF:	723 bp
Locus ID:	67851
UniProt ID:	Q9CQF4
Cytogenetics:	10 B2

Gene Summary: Mitochondrial RNA-binding protein involved in mitochondrial transcription regulation. Functions as a protective factor to maintain proper mitochondrial RNA level during stress. Acts at the transcription level and its protective function depends on its RNA binding ability. [UniProtKB/Swiss-Prot Function]

Product images:



Circular map for MG202957