

Product datasheet for **MG202897**

Rab23 (BC025578) Mouse Tagged ORF Clone

Product data:

Product Type: Expression Plasmids
Product Name: Rab23 (BC025578) Mouse Tagged ORF Clone
Tag: TurboGFP
Symbol: Rab23
Synonyms: AW545388; opb; opb2
Mammalian Cell Selection: Neomycin
Vector: pCMV6-AC-GFP (PS100010)
E. coli Selection: Ampicillin (100 ug/mL)
ORF Nucleotide Sequence: >MG202897 representing BC025578
Red=Cloning site Blue=ORF Green=Tags(s)

TTTTGTAATACGACTCACTATAGGGCGGCCGGAATTCGTCGACTGGATCCGGTACCGAGGAGATCTGCC
GCC**CGATCGCC**

ATGTTGGAGGAAGATATGGAAGTGGCCATCAAGATGGTGGTGGTGGGAATGGGGCGTTGGAAAGTCGA
GCATGATTCAGCGCTACTGCAAAGGCATTTTCACAAAAGACTACAAGAAAACCATCGGCGTAGACTTTTT
GGAGCGACAGATTCAGGTTAATGATGAAGATGTAAGGCTAATGTTATGGGACACTGCAGGTCAAGAGGAG
TTTGATGCAATCACGAAGGCCTACTATCGAGGAGCCCAGGCTTGTGTGCTTGTGTTTTCTACCACAGACA
GGGAATCTTTTGAAGCGATTTCCAGCTGGAGAGAAAAAGTAGTAGCGGAGTTGGAGATATACCAACCGC
ACTGGTGCAAAACAAGATCGATCTGCTGGATGATTCATGCATCAAAAATGAGGAAGCGGAGGGACTGGCC
AAAAGGCTAAAGCTGAGGTTCTACCGGACGTCCGTGAAGGAGGACCTCAACGTGAGTGAAGTTTTTAAAT
ATTTGGCTGAGAAACACCTACAAAACTCAAACAATAAACCGAAGATCCAGAACAGACACACTCAAG
TAGTAACAAGATTGGTGTCTTAAATGCATCGGTCGGAAGTCACTTGGGCCAGAATTCAAGTTCCTTAAT
GGTGGCGATGTCATCAACCTTAGACCTAACAACAAGGACCAAGAGAACCAGAAACCTTTCAGCAGCT
GTAGTGTACCC

ACGCGTACGCGGCCGCTCGAG - GFP Tag - GTTTAA



[View online »](#)

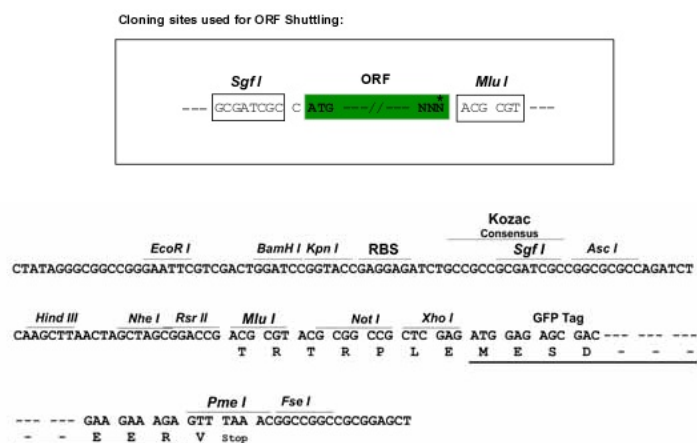
Protein Sequence: >MG202897 representing BC025578
 Red=Cloning site Green=Tags(s)

MLEEDMEVAIKMVVVNGAVGKSSMIQRYCKGIFTKDYKKTIGVDFLERQIQVNDEDVRLMLWDTAGQEE
 FDAITKAYYRGAQACVLVFSTTDRESFEAISSWREKVVAEVDIPTALVQNKIDLLDDSCIKNEEAEGLA
 KRLKLRFYRTSVKEDLNVEVFKYLAEKHLQKLKQQITEDPEQTHSSSNKIGVFNASVGSHLGQNSSSLN
 GGDVINLRPNKQRTKRTRNPFSSCSVP

TRTRPLE - GFP Tag - V

Restriction Sites: SgfI-MluI

Cloning Scheme:



ACCN: BC025578

ORF Size: 711 bp

OTI Disclaimer: The molecular sequence of this clone aligns with the gene accession number as a point of reference only. However, individual transcript sequences of the same gene can differ through naturally occurring variations (e.g. polymorphisms), each with its own valid existence. This clone is substantially in agreement with the reference, but a complete review of all prevailing variants is recommended prior to use. [More info](#)

OTI Annotation: This clone was engineered to express the complete ORF with an expression tag. Expression varies depending on the nature of the gene.

Components: The ORF clone is ion-exchange column purified and shipped in a 2D barcoded Matrix tube containing 10ug of transfection-ready, dried plasmid DNA (reconstitute with 100 ul of water).

Reconstitution Method:

1. Centrifuge at 5,000xg for 5min.
2. Carefully open the tube and add 100ul of sterile water to dissolve the DNA.
3. Close the tube and incubate for 10 minutes at room temperature.
4. Briefly vortex the tube and then do a quick spin (less than 5000xg) to concentrate the liquid at the bottom.
5. Store the suspended plasmid at -20°C. The DNA is stable for at least one year from date of shipping when stored at -20°C.

RefSeq: [BC025578](#), [AAH25578](#)

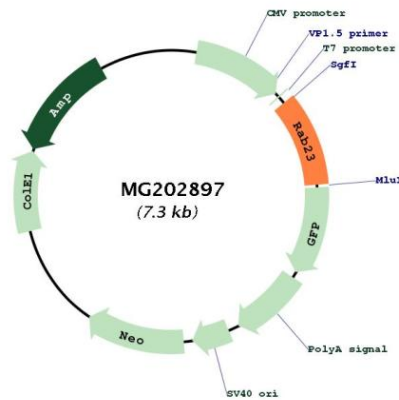
RefSeq Size: 2452 bp

RefSeq ORF: 713 bp

Locus ID: 19335

Cytogenetics: 1 12.8 cM

Product images:



Circular map for MG202897