

Product datasheet for **MG202891**

1700019N19Rik (NM_026208) Mouse Tagged ORF Clone

Product data:

Product Type: Expression Plasmids
Product Name: 1700019N19Rik (NM_026208) Mouse Tagged ORF Clone
Tag: TurboGFP
Symbol: 1700019N19Rik
Mammalian Cell Selection: Neomycin
Vector: pCMV6-AC-GFP (PS100010)
E. coli Selection: Ampicillin (100 ug/mL)
ORF Nucleotide Sequence: >MG202891 representing NM_026208
 Red=Cloning site Blue=ORF Green=Tags(s)

TTTTGTAATACGACTCACTATAGGGCGGCCGGAATTCGTCGACTGGATCCGGTACCGAGGAGATCTGCC
 GCC**CGATCGCC**

ATGCTCAAGCCAGCGGAGAGTAAATGGAGTCTCCAAGACCTTCATGAGAAAGCTGCCATCACTCCAG
 GATACTGCGGCTTCATACCATGGCTCAGTTGCCAGGAAAGCTCCAGCGAGGACCGCATGAATCCCTGTGT
 GAAAGCGTTCCAGGAGAGAACGCAGAGATACAAGGAGGACCAGCAGGGATTAAGTGTCTGTGGCCAAC
 ACCCCACCCCTGAAGCCCATCTGTTCTGAGGACACGGTCTGTGGGTGTTGCATGAGTATGCCAAGAAGT
 ACCACCCCTGACTCTGGAATGCAAAAACGAGAAGAAACCGCTGCAGGAGCCCCCTATCCCTGGCTGGGC
 AGGCTACCTGCCAGAGCTAGGGTCACTGAATTTGGCTATGCCACAAGGTATACCATCATGGCCAAAAAG
 TGCTACAAGGACTTCTGGATTTGGTGGAGCAAGCCAAGAGGGCTCAGCTGAAGCCATATGAGCAAACAT
 ACGATGTGAGGGCTGCCAGCCTCTTAGCCCTTCTCAAAAATCTTGAGCTGCAAGGTCTCTACCCGC
 ATTTCCAGAATTCTGGGCCAGGTCAAACACCCCAAGTGAAGACCCCAAGCTCCAGGCCCTGTGGT
 TGTGCTCAGTGGTCCAGCCAGTCATGCAGCAGGAATGTGTATGGGGAGCCACCATCCTTAGCAAAGGCTT
 TGCCGAGAGC

ACGCGTACGCGGCCGCTCGAG - GFP Tag - GTTTAA

Protein Sequence: >MG202891 representing NM_026208
 Red=Cloning site Green=Tags(s)

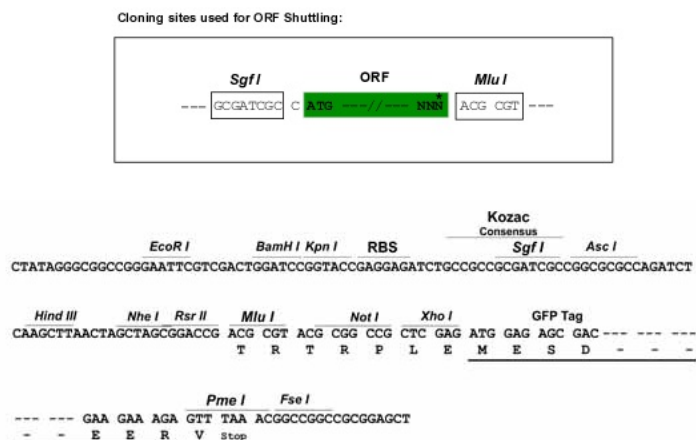
MLKPAESKMESPKTFMRKLPITPGYCGFIPWLSQESSSEDRMNPVKAFQERTQRYKEDQQGLNCSVAN
 TPPLKPICS EDTVLWVLEHYAKKYHPLTLECKNEKKPLQEPPIGWAGYLPRARVTEFGYATRYTIMAKK
 CYKDFLDLVEQAKRAQLKPYEQTYDVRAAQPLSPSSKILQLQLSPAFPEFSGPGQTPPSEDPQAPRPGC
 CAQWSSQSCSRNVYGEPPSLAKAFAES

TRTRPLE - GFP Tag - V

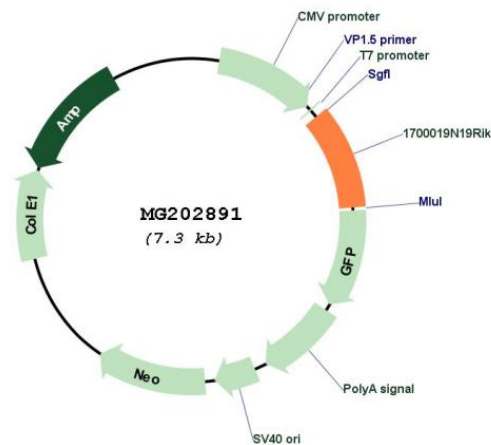


Restriction Sites: SgfI-MluI

Cloning Scheme:



Plasmid Map:



ACCN: NM_026208

ORF Size: 711 bp

OTI Disclaimer: The molecular sequence of this clone aligns with the gene accession number as a point of reference only. However, individual transcript sequences of the same gene can differ through naturally occurring variations (e.g. polymorphisms), each with its own valid existence. This clone is substantially in agreement with the reference, but a complete review of all prevailing variants is recommended prior to use. [More info](#)

OTI Annotation: This clone was engineered to express the complete ORF with an expression tag. Expression varies depending on the nature of the gene.

Components:	The ORF clone is ion-exchange column purified and shipped in a 2D barcoded Matrix tube containing 10ug of transfection-ready, dried plasmid DNA (reconstitute with 100 ul of water).
Reconstitution Method:	<ol style="list-style-type: none">1. Centrifuge at 5,000xg for 5min.2. Carefully open the tube and add 100ul of sterile water to dissolve the DNA.3. Close the tube and incubate for 10 minutes at room temperature.4. Briefly vortex the tube and then do a quick spin (less than 5000xg) to concentrate the liquid at the bottom.5. Store the suspended plasmid at -20°C. The DNA is stable for at least one year from date of shipping when stored at -20°C.
RefSeq:	<u>NM_026208.2</u> , <u>NP_080484.1</u>
RefSeq Size:	923 bp
RefSeq ORF:	714 bp
Locus ID:	67507
UniProt ID:	<u>Q9CQT6</u>
Cytogenetics:	19 D2