

Product datasheet for **MG202886**

Gamt (NM_010255) Mouse Tagged ORF Clone

Product data:

Product Type:	Expression Plasmids
Product Name:	Gamt (NM_010255) Mouse Tagged ORF Clone
Tag:	TurboGFP
Symbol:	Gamt
Synonyms:	AA571402; Spintz1
Mammalian Cell Selection:	Neomycin
Vector:	pCMV6-AC-GFP (PS100010)
E. coli Selection:	Ampicillin (100 ug/mL)
ORF Nucleotide Sequence:	>MG202886 representing NM_010255 Red=Cloning site Blue=ORF Green=Tags(s)

TTTTGTAATACGACTCACTATAGGGCGGCCGGAATTCGTCGACTGGATCCGGTACCGAGGAGATCTGCC
GCC**CGATCGCC**

ATGAGCTCTTCTGCAGCTAGCCCGCTCTTCGCGCCCGGCGAGGACTGCGGCCCGCGTGGCGCGCGGCC
CCGCGGCCTATGACCGTCTGACACGCACCTGCAAATCCTGGCAAGCCAGTGATGGAGCGTTGGGAGAC
CCCCTATATGCATGCGCTAGCGGCGCTGCTGCCTCCAGAGGGGGCCGGTCTTGAAGTGGCTTCGGT
ATGGCCATTGCAGCCTCCAGGGTCAACAGGCCCCATAGAGGAACACTGGATTATTGAGTGCAATGATG
GGGTCTCCAGCGTCTACAAGACTGGGCCCTGCGGCAGCCACATAAGGTTGTTCCCTTGAAGGCCTGTG
GGAGGAGTGGCACCTACCCTGCCTGACGGTCACTTTGATGGGATTCTATATGACACGTACCCGCTGTCT
GAAGAGGCCTGGCACACTCACCAGTTCAACTTTATTAAGAATCATGCCTTCGCTTGAAGACCGGGG
GCGTCCTCACCTACTGCAACCTCACGTCCTGGGGGAGCTCATGAAGTCAAATACACAGACATCACCAC
CATGTTTGAGGAGACGCAGGTGCCTGCACTGCAGGAAGCTGGCTTCTGAAAGAAAACATCTGCACAGAG
GTGATGGCACTGGTGCCCCAGCCGACTGCCGCTACTATGCCTTCCTCAGATGATCACACCCTGGTCA
CCAAGCAC

AGCGGACCGACGCGTACGCGGCCGCTCGAG - GFP Tag - GTTTAA



[View online »](#)

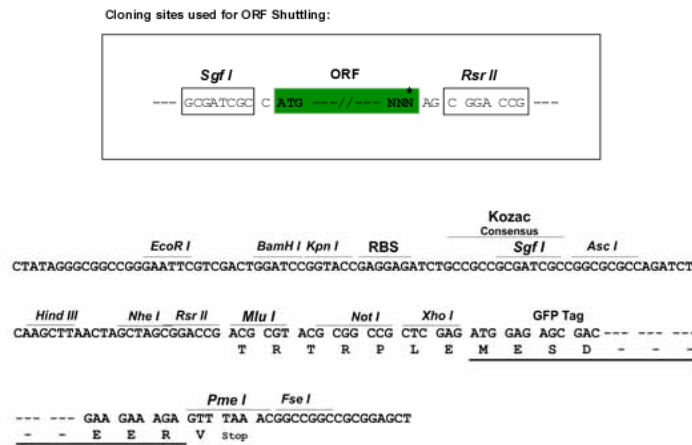
Protein Sequence: >MG202886 representing NM_010255
 Red=Cloning site Green=Tags(s)

MSSSAASPLFAPGEDCGPAWRAAPAAAYDASDTHLQILGKPVMERWETPYMHALAAAAASRGGRVLEVGF
 MAIAASRVQQAPIEEHWIIECNDGVFQRLQDWALRQPHKVVPLKGLWEEVAPTLPDGHFDGILYDTPLS
 EEAWHTHQFNFIKNHAFRLKKTGGVLTVCNLTSWGELMKSKYTDITTMFEETQVPALQEAGFLKENICTE
 VMALVPPADCRYAFQPMITPLVTKH

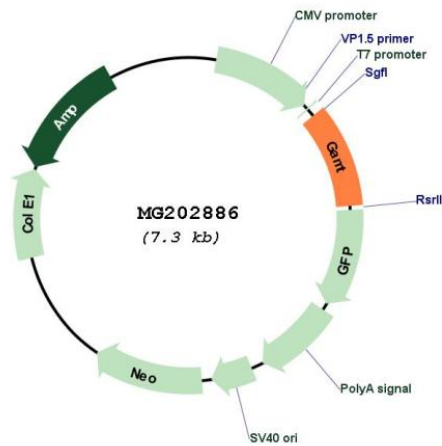
SGPTRRRLE - GFP Tag - V

Restriction Sites: SgfI-RsrII

Cloning Scheme:



Plasmid Map:



ACCN: NM_010255

ORF Size: 708 bp

OTI Disclaimer:	The molecular sequence of this clone aligns with the gene accession number as a point of reference only. However, individual transcript sequences of the same gene can differ through naturally occurring variations (e.g. polymorphisms), each with its own valid existence. This clone is substantially in agreement with the reference, but a complete review of all prevailing variants is recommended prior to use. More info
OTI Annotation:	This clone was engineered to express the complete ORF with an expression tag. Expression varies depending on the nature of the gene.
Components:	The ORF clone is ion-exchange column purified and shipped in a 2D barcoded Matrix tube containing 10ug of transfection-ready, dried plasmid DNA (reconstitute with 100 ul of water).
Reconstitution Method:	<ol style="list-style-type: none">1. Centrifuge at 5,000xg for 5min.2. Carefully open the tube and add 100ul of sterile water to dissolve the DNA.3. Close the tube and incubate for 10 minutes at room temperature.4. Briefly vortex the tube and then do a quick spin (less than 5000xg) to concentrate the liquid at the bottom.5. Store the suspended plasmid at -20°C. The DNA is stable for at least one year from date of shipping when stored at -20°C.
RefSeq:	NM_010255.4
RefSeq Size:	939 bp
RefSeq ORF:	711 bp
Locus ID:	14431
UniProt ID:	O35969
Cytogenetics:	10 39.72 cM
Gene Summary:	Converts guanidinoacetate to creatine, using S-adenosylmethionine as the methyl donor. Important in nervous system development.[UniProtKB/Swiss-Prot Function]