

Product datasheet for **MG202832**

Otub2 (NM_026580) Mouse Tagged ORF Clone

Product data:

Product Type: Expression Plasmids
Product Name: Otub2 (NM_026580) Mouse Tagged ORF Clone
Tag: TurboGFP
Symbol: Otub2
Synonyms: 2010015L18Rik; 4930586I02Rik; AI413508; AW557219; OTB2; OTU2
Mammalian Cell Selection: Neomycin
Vector: pCMV6-AC-GFP (PS100010)
E. coli Selection: Ampicillin (100 ug/mL)
ORF Nucleotide Sequence: >MG202832 representing NM_026580
 Red=Cloning site Blue=ORF Green=Tags(s)

TTTTGTAATACGACTCACTATAGGGCGCCGGAATTCGTCGACTGGATCCGGTACCGAGGAGATCTGCC
 GCC**CGATCGCC**

ATGAGTGAACATCTTTCAACCTAATATCAGAAAAATGTGACATTCTATCCATTCTTCGGGATCATCCTG
 AAAACAGGATTTACCAGAGGAAAATCCAGGAACCTCAGCAAAGATTCACCTCGATCCGGAAGACCAAAGG
 AGACGGAAACTGCTTCTACAGGGCCTTAGGCTATTCCTACCTGGAGTCTTGCTGGGCAAGAGCAGAGAG
 ATCCTCAAGTTCAAAGAGCGTGTGCTACAGACCCAAATGACCTTCTGGCTGCCGGCTTTGAGGAACACA
 AGTTCAGAACTTCTTTAATGCTTTTTACAGTGTGGTTGAGCTGGTAGAGAAGGATAGCTCAGTGTCCAG
 CCTGCTGAAGGTGTTCAATGACCAGAGTTCCTCGACCGAATCGTGCAGTCTTACGCCTCTCAGTGC
 GCCTTCATCAGGAACCGAGCTGACTTCTCCGACATTTTCATTGATGAGGAGATGGACATCAAGACTTCT
 GCACTCACGAAGTAGAGCCCATGGCCATGGAGTGTGACCACGTGCAGATCACAGCCCTGTGCGAGGCACT
 CAACATTGCTCTGCAGGTAGAGTACGTGACGAGATGGACACCGCTCTGAACCACCACGTGTTCCCCGAG
 GCTGCCATCCCTTCGGTTTATCTGCTCTATAAAACATCCCACTACAACATCCTTTACGCAGCCGAGAAAC
 AC

ACGCGTACGCGGCCGCTCGAG - GFP Tag - GTTTAA



[View online »](#)

Protein Sequence: >MG202832 representing NM_026580
 Red=Cloning site Green=Tags(s)

MSETSNLISEKCDILSILRDHPENRIYQRKIQELSKRFTSIRKTKGDGNCFYRALGYSYLESLLGKSRE
 ILKFKERVLQTPNDLLAAGFEEHKFRNFFNAFYSVVELVEKDSSVSSLLKVFNDSQSSDRIVQFLRLTS
 AFIRNRADFFRHFIDEEMDIKDFCTHEVEPMAMECDHVQITALSQLNIALQVEYVDEMDTALNHHVFP
 AAIPSVYLLYKTSHYNILYAAEKH

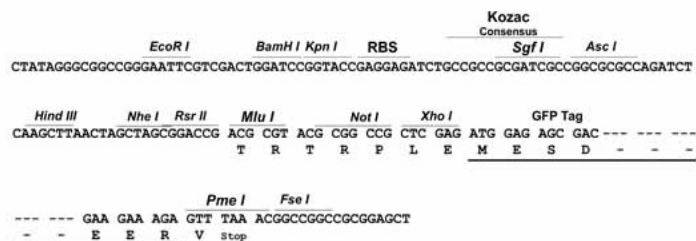
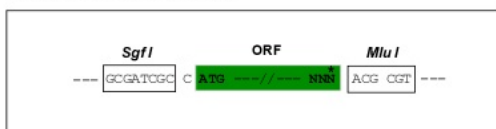
TRTRPLE - GFP Tag - V

Chromatograms: https://cdn.origene.com/chromatograms/ja2301_e05.zip

Restriction Sites: SgfI-MluI

Cloning Scheme:

Cloning sites used for ORF Shutting:



ACCN: NM_026580

ORF Size: 702 bp

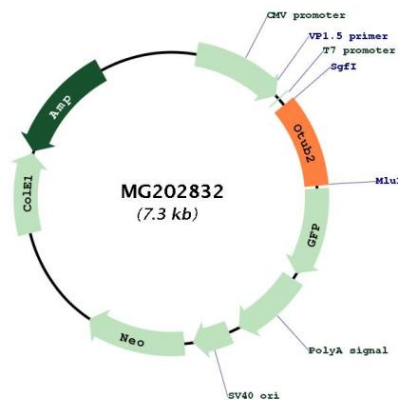
OTI Disclaimer: Due to the inherent nature of this plasmid, standard methods to replicate additional amounts of DNA in E. coli are highly likely to result in mutations and/or rearrangements. Therefore, OriGene does not guarantee the capability to replicate this plasmid DNA. Additional amounts of DNA can be purchased from OriGene with batch-specific, full-sequence verification at a reduced cost. Please contact our customer care team at custsupport@origene.com or by calling 301.340.3188 option 3 for pricing and delivery.

The molecular sequence of this clone aligns with the gene accession number as a point of reference only. However, individual transcript sequences of the same gene can differ through naturally occurring variations (e.g. polymorphisms), each with its own valid existence. This clone is substantially in agreement with the reference, but a complete review of all prevailing variants is recommended prior to use. [More info](#)

OTI Annotation: This clone was engineered to express the complete ORF with an expression tag. Expression varies depending on the nature of the gene.

Components:	The ORF clone is ion-exchange column purified and shipped in a 2D barcoded Matrix tube containing 10ug of transfection-ready, dried plasmid DNA (reconstitute with 100 ul of water).
Reconstitution Method:	<ol style="list-style-type: none">1. Centrifuge at 5,000xg for 5min.2. Carefully open the tube and add 100ul of sterile water to dissolve the DNA.3. Close the tube and incubate for 10 minutes at room temperature.4. Briefly vortex the tube and then do a quick spin (less than 5000xg) to concentrate the liquid at the bottom.5. Store the suspended plasmid at -20°C. The DNA is stable for at least one year from date of shipping when stored at -20°C.
RefSeq:	<u>NM_026580.4, NP_080856.1</u>
RefSeq Size:	2813 bp
RefSeq ORF:	705 bp
Locus ID:	68149
UniProt ID:	<u>Q9CQX0</u>
Cytogenetics:	12 E
Gene Summary:	Hydrolase that can remove conjugated ubiquitin from proteins in vitro and may therefore play an important regulatory role at the level of protein turnover by preventing degradation. Mediates deubiquitination of 'Lys-11', 'Lys-48' and 'Lys-63'-linked polyubiquitin chains, with a preference for 'Lys-63'-linked polyubiquitin chains (By similarity).[UniProtKB/Swiss-Prot Function]

Product images:



Circular map for MG202832