

## Product datasheet for **MG202828**

### Ubtd2 (NM\_173784) Mouse Tagged ORF Clone

#### Product data:

Product Type:	Expression Plasmids
Product Name:	Ubtd2 (NM_173784) Mouse Tagged ORF Clone
Tag:	TurboGFP
Symbol:	Ubtd2
Synonyms:	4930571L24; 9630054F20Rik; AI645720
Mammalian Cell Selection:	Neomycin
Vector:	pCMV6-AC-GFP (PS100010)
E. coli Selection:	Ampicillin (100 ug/mL)
ORF Nucleotide Sequence:	>MG202828 representing NM_173784 Red=Cloning site Blue=ORF Green=Tags(s)

TTTTGTAATACGACTCACTATAGGGCGGCCGGAATTCGTCGACTGGATCCGGTACCGAGGAGATCTGCC  
GCC**CGATCGCC**

ATGGGCGGGTGCCTGGGCGCCAGCAGACTCTTCGGGCAGCCTCAACGAGAACTCGGACGGCACGGGAG  
TTGCTCTAGGTCGTAACAGCCTTTGAAAAGGAGAAACCAAATGAAAAGTGACTATCCCATGACAGA  
TGGACAACTGCGCAGCAAGAGGGATGAATTCTGGGACTGCACCAGCTTTGAAGGCCGAAAGAGATC  
TGGGATGCCTTGAAGCCGCTGCACATGCTTTGAAAGCAATGATCATGAACTGGCACAGGCAATCATTG  
ACGGTCAAACATAAACTACCACCGGTGCACTGACAGAGTGCTACGATGAGCTGGGAAACCGGTACCA  
GCTGCCAGTCTATTGCCTGGCACCACCAATCAACATGATAGAGGAAAAGAGTGACATAGAGACTCTTGAT  
ATTCCTGAGCCACCTCCAATTCTGGACACGAATCTCAGCTCCGCTGCGGCTCTCCACAGGCAAAGACC  
TCAGGCTCGTGGTCCGCAGCACAGACAGTGTTCACATGAAGAGGCGCTTACACGCCACAGAGGGCGT  
GGAGCCAGGCAGCCAGCGCTGGTTCTTCTGCGCAGGCTCTCACGGATAAGATGAAGCTGGAGGAGCTG  
AAGATCCCAAGGACTATGTGGTGCAGTTATAGTGAGCCAGCCTGTGCAAACCCCAACACCAGTGGAGA  
AC

**ACGCGT**ACGCGGCCGCTCGAG - GFP Tag - GTTTAA



[View online »](#)

**Protein Sequence:** >MG202828 representing NM\_173784  
Red=Cloning site Green=Tags(s)

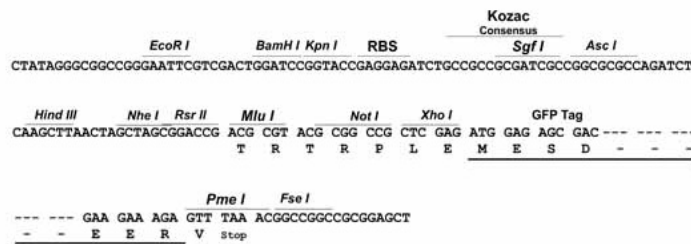
MGGCVGAQHDSSGSLNENSDGTGVALGRNQPLKKEKPKWKSDYPMTDQQLRSKRDEFWDTAPAFEGRKEI  
 WDALKAAAHAFESNDHELAQAIIDGANITLPHGALTECYDELGNRYQLPVYCLAPPINMIEEKSDIETLD  
 IPEPPNSGHESQLRLRLSTGKDLRLVVRSTDTVFHMKRRLHATEGVEPGSQRWFFSGRPLTDKMKLEEL  
 KIPKDYVVQVIVSQPVQTPVFN

TRTRPLE - GFP Tag - V

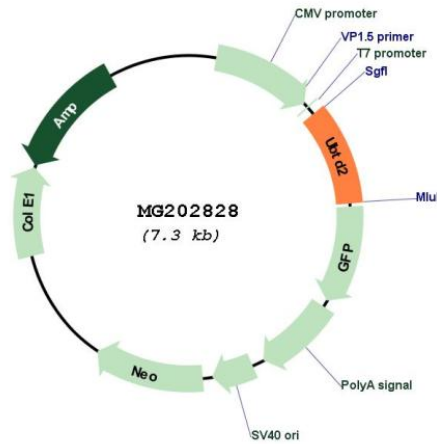
**Restriction Sites:** SgfI-MluI

**Cloning Scheme:**

Cloning sites used for ORF Shutting:



**Plasmid Map:**



**ACCN:** NM\_173784

**ORF Size:** 702 bp

<b>OTI Disclaimer:</b>	The molecular sequence of this clone aligns with the gene accession number as a point of reference only. However, individual transcript sequences of the same gene can differ through naturally occurring variations (e.g. polymorphisms), each with its own valid existence. This clone is substantially in agreement with the reference, but a complete review of all prevailing variants is recommended prior to use. <a href="#">More info</a>
<b>OTI Annotation:</b>	This clone was engineered to express the complete ORF with an expression tag. Expression varies depending on the nature of the gene.
<b>Components:</b>	The ORF clone is ion-exchange column purified and shipped in a 2D barcoded Matrix tube containing 10ug of transfection-ready, dried plasmid DNA (reconstitute with 100 ul of water).
<b>Reconstitution Method:</b>	<ol style="list-style-type: none"><li>1. Centrifuge at 5,000xg for 5min.</li><li>2. Carefully open the tube and add 100ul of sterile water to dissolve the DNA.</li><li>3. Close the tube and incubate for 10 minutes at room temperature.</li><li>4. Briefly vortex the tube and then do a quick spin (less than 5000xg) to concentrate the liquid at the bottom.</li><li>5. Store the suspended plasmid at -20°C. The DNA is stable for at least one year from date of shipping when stored at -20°C.</li></ol>
<b>RefSeq:</b>	<a href="#">NM_173784.4</a>
<b>RefSeq Size:</b>	3056 bp
<b>RefSeq ORF:</b>	705 bp
<b>Locus ID:</b>	327900
<b>UniProt ID:</b>	<a href="#">Q6PGH0</a>
<b>Cytogenetics:</b>	11 A4