

Product datasheet for **MG202817**

Stard6 (NM_029019) Mouse Tagged ORF Clone

Product data:

Product Type:	Expression Plasmids
Tag:	TurboGFP
Symbol:	Stard6
Synonyms:	1700011K09Rik; 4833424I06Rik; 4933429L05Rik; AI644424
Mammalian Cell Selection:	Neomycin
Vector:	pCMV6-AC-GFP (PS100010)
E. coli Selection:	Ampicillin (100 ug/mL)

ORF Nucleotide Sequence: >MG202817 representing NM_029019
Red=Cloning site Blue=ORF Green=Tags(s)

TTTTGTAATACGACTACTATAGGGCGCCGGGAATTCGTGACTGGATCCGGTACCGAGGAGATCTGCC
GCCGCGATCGCC

ATGGACTATAAGGCAATTGCCCAACAACTGCTGAACAAGTTTTAGCTTACAATCAAGACCTATCTGGCT
GGAAACTCATTAAATCTCAAAAAAGGTAAGTGTTCAGCAAGACCTCTAGAATATCCACGGAAACCT
ATACCGCGTTGAAGGAATAATCCAGAATCAGCAGCTCATCTCTGACTTCTCTTCAAACATGATCAC
AGAGTCTCATGGGACAAATCATTGAAAGGGTTCAATGTGATACACAAGATTGATTCGGACACACTCATAT
GCCACACCATTACACAAAAGTTTTGCCATGGGCTCAATTTCCCTAGAGACTTTATCGACTTAGTACACAT
CAAGCACTATGAAAGGAACGTGGACATTATCAGTACTAAAAGTGTGGACTTCCAGGATATGCTCCAAC
TCGACTTATATCCGTGGCTTAAATCATCCCTCTGGCTATGTGTTCACCTCTGAAGGAAAACCCAGCCT
ATTCCAAGCTAGTGATTTTTGTCCAGACAGAGATGAAAGGAAAATTGCCTGCATCGGTAATTGAAAAGTC
TATGCCTTCCAACCTAGTAAGCTTCTCTCAATGTGAAAGATGGCGTAAAGACGTACAGAATCCACCC
ATACGTGCCCGGCACAGTTCGCACTCTGTGCACAAAAAGAAAGGACATTCTGCCATTAACCC

ACGCGTACGCGGCCGCTCGAG - GFP Tag - GTTTAA

Protein Sequence: >MG202817 representing NM_029019
Red=Cloning site Green=Tags(s)

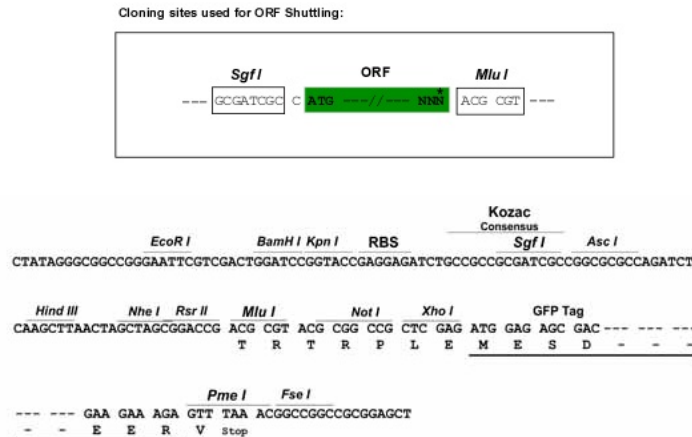
MDYKAIQQTAEQVLAYNQDL SGWKLKIKSSKVTVSSKTSRIFHGNLYRVEGIIPESAAHLSDFLFKHDH
RVSWDKSLKGFNVIHKIDS TLICHTITQSFAMGSI SPRDFIDL VHIKHYERNVDIIISTKSVD FPGYAPT
STYIRGFNHPSGYVCSPLKENPAYS KLVI FVQTEMKGKLPASVIEKSMPSNLV SFLLNKVDG VKTYRIPP
IRARHSSHSSVHKKKEGHS AIKP

TRTRPLE - GFP Tag - V



Restriction Sites: SgfI-MluI

Cloning Scheme:



ACCN: NM_029019

ORF Size: 699 bp

OTI Disclaimer: The molecular sequence of this clone aligns with the gene accession number as a point of reference only. However, individual transcript sequences of the same gene can differ through naturally occurring variations (e.g. polymorphisms), each with its own valid existence. This clone is substantially in agreement with the reference, but a complete review of all prevailing variants is recommended prior to use. [More info](#)

OTI Annotation: This clone was engineered to express the complete ORF with an expression tag. Expression varies depending on the nature of the gene.

Components: The ORF clone is ion-exchange column purified and shipped in a 2D barcoded Matrix tube containing 10ug of transfection-ready, dried plasmid DNA (reconstitute with 100 ul of water).

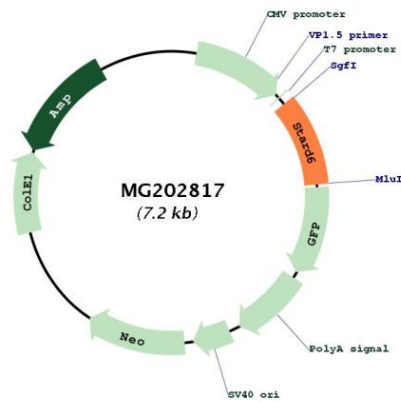
Reconstitution Method:

1. Centrifuge at 5,000xg for 5min.
2. Carefully open the tube and add 100ul of sterile water to dissolve the DNA.
3. Close the tube and incubate for 10 minutes at room temperature.
4. Briefly vortex the tube and then do a quick spin (less than 5000xg) to concentrate the liquid at the bottom.
5. Store the suspended plasmid at -20°C. The DNA is stable for at least one year from date of shipping when stored at -20°C.

Note: Plasmids are not sterile. For experiments where strict sterility is required, filtration with 0.22um filter is required.

RefSeq: [NM_029019.4](#), [NP_083295.1](#)

RefSeq Size:	1402 bp
RefSeq ORF:	702 bp
Locus ID:	170461
UniProt ID:	P59096
Cytogenetics:	18 44.44 cM
Gene Summary:	May be involved in the intracellular transport of sterols or other lipids. May bind cholesterol or other sterols (By similarity).[UniProtKB/Swiss-Prot Function]

Product images:

Circular map for MG202817