

## Product datasheet for **MG202816**

### Msra (NM\_026322) Mouse Tagged ORF Clone

#### Product data:

Product Type:	Expression Plasmids
Product Name:	Msra (NM_026322) Mouse Tagged ORF Clone
Tag:	TurboGFP
Symbol:	Msra
Synonyms:	2310045J23Rik; 6530413P12Rik; MSR-A
Mammalian Cell Selection:	Neomycin
Vector:	pCMV6-AC-GFP (PS100010)
E. coli Selection:	Ampicillin (100 ug/mL)
ORF Nucleotide Sequence:	>MG202816 representing NM_026322 Red=Cloning site Blue=ORF Green=Tags(s)

TTTTGTAATACGACTCACTATAGGGCGCCGGAATTCGTCGACTGGATCCGGTACCGAGGAGATCTGCC  
GCC**CGATCGCC**

ATGCTCTCCGCTCTAGAAGGGCTCTCCAGCTCCTCTCTAGCGCCAACCCGGTACGGAGGATGGGCGACT  
CAGCTTCGAAAGTCATCTCCGCAGAGGAAGCCTTGCCGGGACGCACCGAGCCGATCCCTGTAACAGCCAA  
ACACCATGTCAGTGGCAACAGAACGGTTGAACCTTCCAGAGGGAACACAGATGGCTGTATTTGGAATG  
GGCTGCTTCTGGGAGCTGAGCGCAAGTCTGGGTCTTAAAAGGAGTGTACTCAACCAAGTGGGCTTTG  
CAGGAGGCCACACACGCAATCCACCTACAAGAGGTCTGCTCAGAAAAAAGTGGCCACGCCGAAGTCGT  
CCGGTGTGTACCGCCAGAGCACATCAGCTTTGAGGAACTGCTCAAGTCTTCTGGGAGAAATCACGAC  
CCGACCAAGGCATGCGCCAAGGCAATGACTTTGGTACACAGTACCGGTACGAGTCTATCCACATCCG  
CCGTGCAGATGGAAGCAGCCCTGAGATCCAAGGAAGAATACAAAAGTTCTTTCAAAGCATAAATTTGG  
CCCCATCACCACCGACATCCGAGAGGGACAAGTGTCTACTATGCCGAAGACTACCACGACAACTCTG  
AGCAAGAACCAGACGGCTACTGTGGCCTCGGGGTACTGGAGTTTCTGCCCGATGGCCATTAATAAAA

**ACGCGT**ACGCGGGCCGCTCGAG - GFP Tag - GTTTAA



[View online »](#)

**Protein Sequence:** >MG202816 representing NM\_026322  
 Red=Cloning site Green=Tags(s)

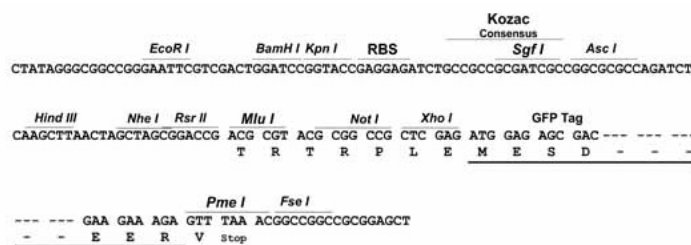
MLSASRRALQLLSSANPVRMGSASKVISAEALPGRTEPIPVTAKHHVSGNRTVEPFPEGTQMAVFGM  
 GCFWGAERKFVWLKGVYSTQVGFAGGHRNPTYKEVCSEKTGHAEVVRVVYRPEHISFEELLKVFWENHD  
 PTQGMRQGNDFGTQYRSVYPTSAVQMEALRSKEEYQKVLSKHNFGPITTDIREQVVFYEAEDYHQOYL  
 SKNPDGYCGLGGTGVSCPMAIKK

TRTRPLE - GFP Tag - V

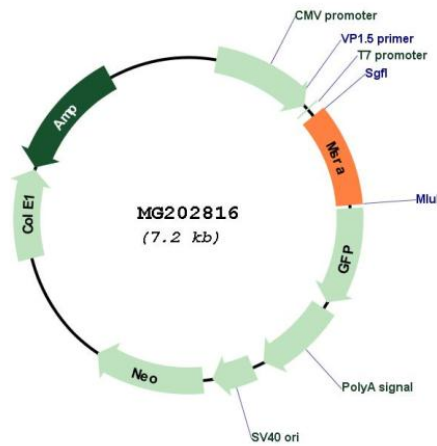
**Restriction Sites:** SgfI-MluI

**Cloning Scheme:**

Cloning sites used for ORF Shuttling:



**Plasmid Map:**



**ACCN:** NM\_026322

**ORF Size:** 699 bp

<b>OTI Disclaimer:</b>	The molecular sequence of this clone aligns with the gene accession number as a point of reference only. However, individual transcript sequences of the same gene can differ through naturally occurring variations (e.g. polymorphisms), each with its own valid existence. This clone is substantially in agreement with the reference, but a complete review of all prevailing variants is recommended prior to use. <a href="#">More info</a>
<b>OTI Annotation:</b>	This clone was engineered to express the complete ORF with an expression tag. Expression varies depending on the nature of the gene.
<b>Components:</b>	The ORF clone is ion-exchange column purified and shipped in a 2D barcoded Matrix tube containing 10ug of transfection-ready, dried plasmid DNA (reconstitute with 100 ul of water).
<b>Reconstitution Method:</b>	<ol style="list-style-type: none"><li>1. Centrifuge at 5,000xg for 5min.</li><li>2. Carefully open the tube and add 100ul of sterile water to dissolve the DNA.</li><li>3. Close the tube and incubate for 10 minutes at room temperature.</li><li>4. Briefly vortex the tube and then do a quick spin (less than 5000xg) to concentrate the liquid at the bottom.</li><li>5. Store the suspended plasmid at -20°C. The DNA is stable for at least one year from date of shipping when stored at -20°C.</li></ol>
<b>RefSeq:</b>	<a href="#">NM_026322.4</a> , <a href="#">NP_080598.2</a>
<b>RefSeq Size:</b>	1890 bp
<b>RefSeq ORF:</b>	702 bp
<b>Locus ID:</b>	110265
<b>UniProt ID:</b>	<a href="#">Q9D6Y7</a>
<b>Cytogenetics:</b>	14 33.36 cM
<b>Gene Summary:</b>	Has an important function as a repair enzyme for proteins that have been inactivated by oxidation. Catalyzes the reversible oxidation-reduction of methionine sulfoxide in proteins to methionine (By similarity).[UniProtKB/Swiss-Prot Function]