

## Product datasheet for **MG202792**

### Csn2 (NM\_009972) Mouse Tagged ORF Clone

#### Product data:

Product Type:	Expression Plasmids
Product Name:	Csn2 (NM_009972) Mouse Tagged ORF Clone
Tag:	TurboGFP
Symbol:	Csn2
Synonyms:	Csnb
Mammalian Cell Selection:	Neomycin
Vector:	pCMV6-AC-GFP (PS100010)
E. coli Selection:	Ampicillin (100 ug/mL)
ORF Nucleotide Sequence:	>MG202792 representing NM_009972 Red=Cloning site Blue=ORF Green=Tags(s)

TTTTGTAATACGACTCACTATAGGGCGCCGGAATTCGTCGACTGGATCCGGTACCGAGGAGATCTGCC  
GCC**CGATCGCC**

ATGAAGGTCTTCATCCTCGCCTGCCTTGCCCTTGCTCTTGCAAGAGAGACTACATTTACTGTATCCT  
CTGAGACTGATAGTATTTCCAGTGAGGAATCTGTTGAACATATCAATGAGCAGAACTTCAGAAGGTGAA  
TCTCATGGGACAGCTGCAGGCAGAGGATGTGCTCCAGGCTAAAGTTCCTCCAGCATCCAGTCACAGCCC  
CAGGCCTTCCATATGCTCAGGCTCAAACCATCTCTTGCAATCCCGTCCCACAAAACATCCAGCCTATTG  
CTCAACCCCTGTGGTGCATCTCTTGGCCTGTCAATTTCTCCTGAACTGGAATCCTTAAAGCTAA  
AGCCACCATCCTTCCCAAGCACAAACAGATGCCCTCCTTAACTCTGAACTGTGCTCCGCTCATAAAC  
TCTCAAATCCCCAGCCTTGCCAGTCTTGTAATCTGCACCTTCTCAGTCTCTGGTCCAGCTCCTGGCAC  
AGGTTGTTCAAGCCTTTCTCAGACTCACCTGGTTTCTTCTCAGACCCAGCTGTCTTCTCAGTCCAA  
AGTTCTGTACTTTCTGCAGCAAGTAGCACCTTCTTCCACAAGATATGTCTGTCCAAGACCTTCTGCAG  
TACCTAGAACTTCTTAACCCACCGTCCAATTCCTGCCACTCCACAACATTCCGTTTCTGTG

**ACGCGT**ACGCGGCCGCTCGAG - GFP Tag - GTTTAA



[View online »](#)

**Protein Sequence:** >MG202792 representing NM\_009972  
 Red=Cloning site Green=Tags(s)

MKVFILACLVALALARETTFTVSSETDISSEESVEHINEQKLQKVNLMGQLQAEDVLQAKVHSSIQSQP  
 QAFPYAQAQTISCNPVQNIQPIAQPPVPSLGPVISPESFLKAKATILPKHKQMPLLNSETVLRLLIN  
 SQIPSLASLANLHLPQSLVQLLAQVVQAFQTHLVSSQTQLSLPQSKVL YFLQQVAPFLPQDMSVQDLLQ  
 YLELLNPTVQFPATPQHSVSV

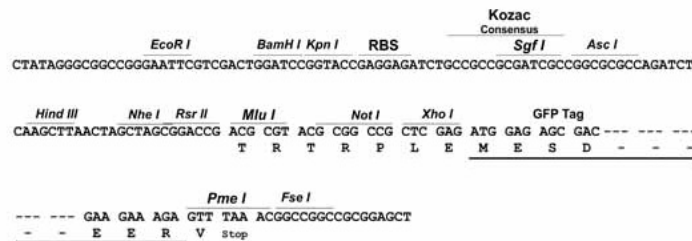
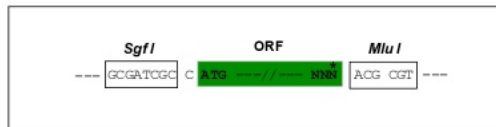
TRTRPLE - GFP Tag - V

**Chromatograms:** [https://cdn.origene.com/chromatograms/ja2727\\_c06.zip](https://cdn.origene.com/chromatograms/ja2727_c06.zip)

**Restriction Sites:** SgfI-MluI

**Cloning Scheme:**

Cloning sites used for ORF Shuttling:



**ACCN:** NM\_009972

**ORF Size:** 693 bp

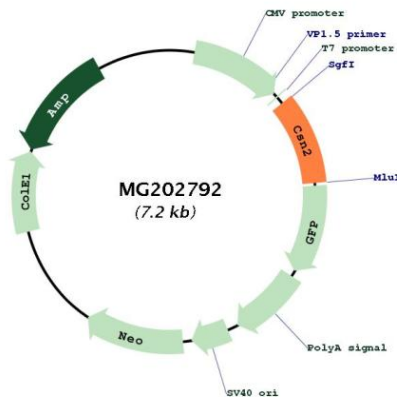
**OTI Disclaimer:** Due to the inherent nature of this plasmid, standard methods to replicate additional amounts of DNA in E. coli are highly likely to result in mutations and/or rearrangements. Therefore, OriGene does not guarantee the capability to replicate this plasmid DNA. Additional amounts of DNA can be purchased from OriGene with batch-specific, full-sequence verification at a reduced cost. Please contact our customer care team at [custsupport@origene.com](mailto:custsupport@origene.com) or by calling 301.340.3188 option 3 for pricing and delivery.

The molecular sequence of this clone aligns with the gene accession number as a point of reference only. However, individual transcript sequences of the same gene can differ through naturally occurring variations (e.g. polymorphisms), each with its own valid existence. This clone is substantially in agreement with the reference, but a complete review of all prevailing variants is recommended prior to use. [More info](#)

**OTI Annotation:** This clone was engineered to express the complete ORF with an expression tag. Expression varies depending on the nature of the gene.

- Components:** The ORF clone is ion-exchange column purified and shipped in a 2D barcoded Matrix tube containing 10ug of transfection-ready, dried plasmid DNA (reconstitute with 100 ul of water).
- Reconstitution Method:**
1. Centrifuge at 5,000xg for 5min.
  2. Carefully open the tube and add 100ul of sterile water to dissolve the DNA.
  3. Close the tube and incubate for 10 minutes at room temperature.
  4. Briefly vortex the tube and then do a quick spin (less than 5000xg) to concentrate the liquid at the bottom.
  5. Store the suspended plasmid at -20°C. The DNA is stable for at least one year from date of shipping when stored at -20°C.
- RefSeq:** [NM\\_009972.2](#)
- RefSeq Size:** 1129 bp
- RefSeq ORF:** 696 bp
- Locus ID:** 12991
- UniProt ID:** [P10598](#)
- Cytogenetics:** 5 43.56 cM
- Gene Summary:** Important role in determination of the surface properties of the casein micelles. [UniProtKB/Swiss-Prot Function]

**Product images:**



Circular map for MG202792