

## Product datasheet for **MG202633**

### Rce1 (BC004060) Mouse Tagged ORF Clone

#### Product data:

**Product Type:** Expression Plasmids  
**Product Name:** Rce1 (BC004060) Mouse Tagged ORF Clone  
**Tag:** TurboGFP  
**Symbol:** Rce1  
**Synonyms:** D19Ertd98e; D19Ertd283e  
**Mammalian Cell Selection:** Neomycin  
**Vector:** pCMV6-AC-GFP (PS100010)  
**E. coli Selection:** Ampicillin (100 ug/mL)  
**ORF Nucleotide Sequence:** >MG202633 representing BC004060  
 Red=Cloning site Blue=ORF Green=Tags(s)

TTTTGTAATACGACTCACTATAGGGCGGCCGGAATTCGTCGACTGGATCCGGTACCGAGGAGATCTGCC  
 GCC**CGATCGCC**

ATGGGCTTCAGGCTGGAGGGCATTTCACAGCAGCGCTGCTGCCCTGCTGCTAACTATGATCCTTTTCC  
 TGGGTCCACTGATGCAGCTCTCTATGGATTGCCCTTGTGACCTGACAGATGGGCTGAAGTTGCTCCTGGC  
 CCCTCGTTCTTGGGCCCGCTGCCTCACAGACATGCGCTGGCTACGAAACCAAGTTATTGCACCGCTGACA  
 GAGGAGCTGGTGTCCGGGCTTGCATGCTGCCATGCTAGCTCCGTGCACGGGTCTGGCCCTGCTGTGT  
 TCACCTGCCACTCTTTTTGGAGTCGCCATTTTCACCACATTATTGAGCAGCTGCGCTCCGCCAGAG  
 CAGTGTGGGAAGTATCTTCGTGTCTGCAGCGTTCAGTTCCTACACCGCTGTCTTCGGTGCTTATACA  
 GCTTTCCTCTTACCCGACAGGACACCTGATAGGGCCGTTCTCTGCCACTCTTCTGCAACTACATGG  
 GCTTCCCTGCAGTGTGTGCAGCCCTGGAGCATCCACAGAAGTGGCCACTGCTGGCAGGCTATGCCCTCGG  
 TGTGGGACTTTTCTGCTTCTGCTTCAACCCCTGACAGACCCCAAGCTCTATGGCAGCCTTCTCTTTGT  
 ATGCTTTTGAAAGAACAGGGGCTCAGAGACCCTACTGTGCTCC

**ACGCGTACGCGGCCGCTCGAG** - GFP Tag - GTTTAA



[View online »](#)

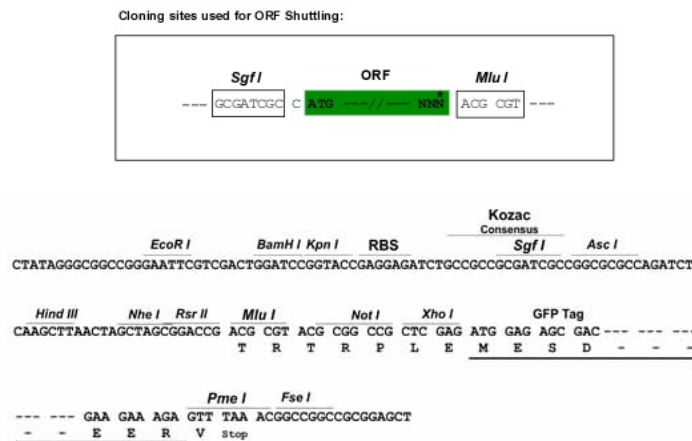
**Protein Sequence:** >MG202633 representing BC004060  
Red=Cloning site Green=Tags(s)

MGFRLEGIFPAALLPLLLTMLIFLGPLMQLSMDPCDLTDGLKVV LAPRSWARCLTDMRWLRNQVIAPLT  
 EELVFRACMLPMLAPCTGLGPAVFTCP LFFGVAHFHHIIEQLRFRQSSVGSIFVSAAFQFSYTA VFGAYT  
 AFLFIRTGHLIGPVLC HSFCNYMGFPVCAALEHPQKWPLLAGYALGVGLFLLLLLQPLTDPKLYGSLPLC  
 MLLERTGASETL LCS

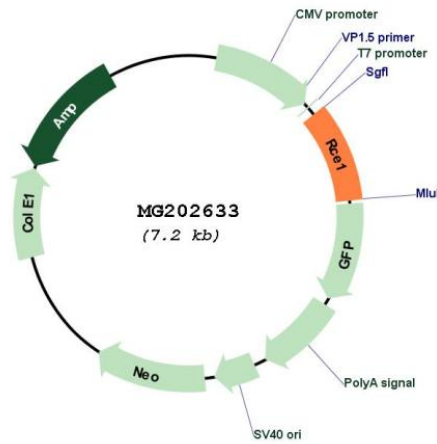
TRTRPLE - GFP Tag - V

**Restriction Sites:** SgfI-MluI

**Cloning Scheme:**



**Plasmid Map:**



**ACCN:** BC004060

**ORF Size:** 677 bp

<b>OTI Disclaimer:</b>	The molecular sequence of this clone aligns with the gene accession number as a point of reference only. However, individual transcript sequences of the same gene can differ through naturally occurring variations (e.g. polymorphisms), each with its own valid existence. This clone is substantially in agreement with the reference, but a complete review of all prevailing variants is recommended prior to use. <a href="#">More info</a>
<b>OTI Annotation:</b>	This clone was engineered to express the complete ORF with an expression tag. Expression varies depending on the nature of the gene.
<b>Components:</b>	The ORF clone is ion-exchange column purified and shipped in a 2D barcoded Matrix tube containing 10ug of transfection-ready, dried plasmid DNA (reconstitute with 100 ul of water).
<b>Reconstitution Method:</b>	<ol style="list-style-type: none"><li>1. Centrifuge at 5,000xg for 5min.</li><li>2. Carefully open the tube and add 100ul of sterile water to dissolve the DNA.</li><li>3. Close the tube and incubate for 10 minutes at room temperature.</li><li>4. Briefly vortex the tube and then do a quick spin (less than 5000xg) to concentrate the liquid at the bottom.</li><li>5. Store the suspended plasmid at -20°C. The DNA is stable for at least one year from date of shipping when stored at -20°C.</li></ol>
<b>RefSeq:</b>	<a href="#">BC004060</a> , <a href="#">AAH04060</a>
<b>RefSeq Size:</b>	1303 bp
<b>RefSeq ORF:</b>	677 bp
<b>Locus ID:</b>	19671
<b>Cytogenetics:</b>	19 A
<b>Gene Summary:</b>	Proteolytically removes the C-terminal three residues of farnesylated and geranylated proteins. Seems to be able to process K-Ras, N-Ras, H-Ras, RAP1B and G-gamma-1 (By similarity).[UniProtKB/Swiss-Prot Function]