

Product datasheet for **MG202597**

Hoxb6 (NM_008269) Mouse Tagged ORF Clone

Product data:

Product Type: Expression Plasmids
Product Name: Hoxb6 (NM_008269) Mouse Tagged ORF Clone
Tag: TurboGFP
Symbol: Hoxb6
Synonyms: Hox-2.2
Mammalian Cell Selection: Neomycin
Vector: pCMV6-AC-GFP (PS100010)
E. coli Selection: Ampicillin (100 ug/mL)
ORF Nucleotide Sequence: >MG202597 representing NM_008269
Red=Cloning site Blue=ORF Green=Tags(s)

TTTTGTAATACGACTCACTATAGGGCGCCGGAATTCGTCGACTGGATCCGGTACCGAGGAGATCTGCC
GCC**CGATCGCC**

ATGAGTTCCTATTTTCGTGAACCTCACCTTCCCCGTCACCTCTGGCCAGCGGGCAGGAGTCCTTCTGGGCC
AGCTGCCGCTCTACTCGTCTGGCTATGCGGACCCGCTGCGGCACTACCCGCGCCTTATGGGCCGGGACC
CGGCCAGGACAAGGGCTTTCGGCGTCTCCTATTACCCACCAGCCGGCGGGCTACGGCCGGGCGGC
CCCTGTGATTATGGCCGGCGCTGCCTTCTACCGGGAGAAGGACGCGGCTGCGCTCTCCGGCGCCG
ACGAGCCGCCCGTTCCACCCGAGCCGCGCAAGTCCGACTGCGCACAGGACAAGAGCGTGTTCGGAGA
GACCGAGGAGCAGAAGTGTCCACGCCGCTACCCGTGGATGCAGCGCATGAATTTCGTGCAACAGTTC
TCTTTTGGGCCACGGTTCGGCGAGGCCGACCTACACACGCTACCAGACCTGGAGCTGGAGAAGG
AATTTCACTATAATCGCTACCTGACCCGCGCGGCATAGAGATCGCGCACGCCCTGTGCCTGACCGA
GCGGCAGATCAAGATTTGGTTTCAGAACC GGCGCATGAAGTGAAAAAGGAGAGCAAAGTCTCAGTGCC
TCTCAGCTCAGTTCGGAGGAGGAGGAAAAAGCCAGCCGAG

ACGCGTACGCGGCCGCTCGAG - GFP Tag - GTTTAA



[View online »](#)

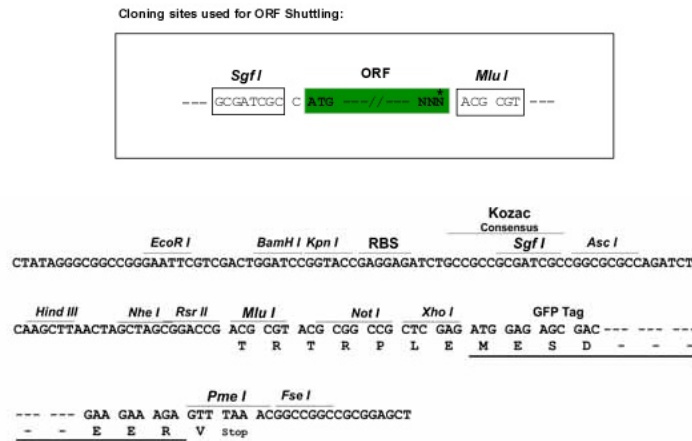
Protein Sequence: >MG202597 representing NM_008269
 Red=Cloning site Green=Tags(s)

MSSYFVNSTFPVTLASGQESFLGQLPLYSSGYADPLRHYPAPYGPQDKGFAASSYPPAGGGYGRAA
 PCDYGPAPAFYREKDAACALSGADEPPPFHPEPRKSDCAQDKSVFGETEEQKCSTPVYPMQRMNSCNS
 SFGPSGRRGRQTYTRYQTLELEKEFHYNRYLTRRRRIEIAHALCLTERQIKIWFQNRMRMKWKESKLLSA
 SQLSAEEEEKPAE

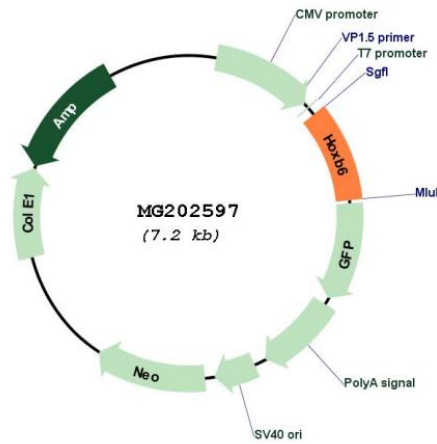
TRTRPLE - GFP Tag - V

Restriction Sites: SgfI-MluI

Cloning Scheme:



Plasmid Map:



ACCN: NM_008269

ORF Size: 672 bp

| | |
|-------------------------------|---|
| OTI Disclaimer: | The molecular sequence of this clone aligns with the gene accession number as a point of reference only. However, individual transcript sequences of the same gene can differ through naturally occurring variations (e.g. polymorphisms), each with its own valid existence. This clone is substantially in agreement with the reference, but a complete review of all prevailing variants is recommended prior to use. More info |
| OTI Annotation: | This clone was engineered to express the complete ORF with an expression tag. Expression varies depending on the nature of the gene. |
| Components: | The ORF clone is ion-exchange column purified and shipped in a 2D barcoded Matrix tube containing 10ug of transfection-ready, dried plasmid DNA (reconstitute with 100 ul of water). |
| Reconstitution Method: | <ol style="list-style-type: none">1. Centrifuge at 5,000xg for 5min.2. Carefully open the tube and add 100ul of sterile water to dissolve the DNA.3. Close the tube and incubate for 10 minutes at room temperature.4. Briefly vortex the tube and then do a quick spin (less than 5000xg) to concentrate the liquid at the bottom.5. Store the suspended plasmid at -20°C. The DNA is stable for at least one year from date of shipping when stored at -20°C. |
| RefSeq: | NM_008269.2 |
| RefSeq Size: | 1344 bp |
| RefSeq ORF: | 675 bp |
| Locus ID: | 15414 |
| UniProt ID: | P09023 |
| Cytogenetics: | 11 59.82 cM |
| Gene Summary: | Sequence-specific transcription factor which is part of a developmental regulatory system that provides cells with specific positional identities on the anterior-posterior axis. [UniProtKB/Swiss-Prot Function] |