

Product datasheet for **MG202589**

Sigmar1 (NM_011014) Mouse Tagged ORF Clone

Product data:

Product Type:	Expression Plasmids
Product Name:	Sigmar1 (NM_011014) Mouse Tagged ORF Clone
Tag:	TurboGFP
Symbol:	Sigmar1
Synonyms:	mSig; O; Oprs1; Si; Sig1R; sigma1R
Mammalian Cell Selection:	Neomycin
Vector:	pCMV6-AC-GFP (PS100010)
E. coli Selection:	Ampicillin (100 ug/mL)
ORF Nucleotide Sequence:	>MG202589 representing NM_011014 Red=Cloning site Blue=ORF Green=Tags(s)

TTTTGTAATACGACTCACTATAGGGCGGCCGGAATTCGTCGACTGGATCCGGTACCGAGGAGATCTGCC
 GCC**CGATCGCC**

ATGCCGTGGGCCGCGGGACGGCGGTGGGCATGGATCACCTGATTCTGACTATTATCGCAGTGCTGATCC
 AGGCCGCCTGTTGTGGCTGGGCACTCAAACCTTCGTCTTCTCTAGAGAAGAAATAGCGCAGCTTGCTCG
 ACAGTATGCGGGGCTGGACCATGAGCTTGCCTTCTCTCGGCTGATCGTGGAGCTGCGGAGGCTGCACCCA
 GGCCACGTGCTGCCGGATGAGGAGCTGCAGTGGGTATTTGTGAACGCGGGCGGCTGGATGGCGCCATGT
 GTATTCTGCACGCCTCGCTGTCTGAGTACGTGCTGCTCTTCGGCACCGCCCTGGGCTCCCATGGCCATTC
 GGGACGATACTGGGCTGAGATTTCTGACACCATCATCTCTGGCACCTTCCACCAATGGAAAGAGGGCACC
 ACGAAAAGTGAGGTCTTCTACCCAGGAGAGACAGTTGTACACGGGCTGGAGAAGCAACGGCTCTGGAGT
 GGGGACCAACACGTGGATGGTGGAGTACGGCCGGGTGTTATTCGTCTACCTGTTCTTTGCACTAGC
 CGACACTTTCTTCAGACCCAGGACTACCTCACACTTCTATACCTTCGGGCCTATGCCCGGGGCCTC
 CGGCTTGAGCTTACCACCTACCTCTTTGGCCAAGACTCC

ACGCGTACGCGGCGGCTCGAG - GFP Tag - GTTTAA


[View online »](#)

Protein Sequence: >MG202589 representing NM_011014
 Red=Cloning site Green=Tags(s)

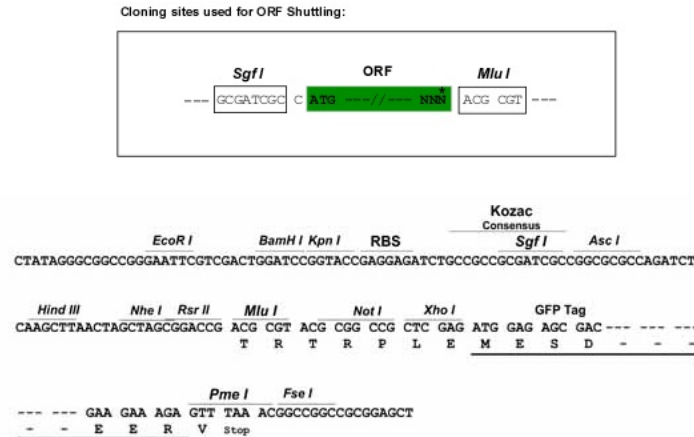
MPWAAGRRWAWITLILTIIAVLIQAAWLWLTQNFVFSREEIAQLARQYAGLDHELAFSRLIVELRRLHP
 GHVLPDEELQWVFVNAGGWMGAMCILHASLSEYVLLFGTALGSHGHSGRYWAEISDTIISGTFHQWKEGT
 TKSEVFPGETVVHGPGEATALEWGPNTWMVEYGRGVIPSTLFFALADTFFSTQDYLTLFYTLRAYARGL
 RLELTTYLFGQDS

TRTRPLE – GFP Tag – V

Chromatograms: https://cdn.origene.com/chromatograms/ja1671_a12.zip

Restriction Sites: SgfI-MluI

Cloning Scheme:



ACCN: NM_011014

ORF Size: 669 bp

OTI Disclaimer: The molecular sequence of this clone aligns with the gene accession number as a point of reference only. However, individual transcript sequences of the same gene can differ through naturally occurring variations (e.g. polymorphisms), each with its own valid existence. This clone is substantially in agreement with the reference, but a complete review of all prevailing variants is recommended prior to use. [More info](#)

OTI Annotation: This clone was engineered to express the complete ORF with an expression tag. Expression varies depending on the nature of the gene.

Components: The ORF clone is ion-exchange column purified and shipped in a 2D barcoded Matrix tube containing 10ug of transfection-ready, dried plasmid DNA (reconstitute with 100 ul of water).

Reconstitution Method:

1. Centrifuge at 5,000xg for 5min.
2. Carefully open the tube and add 100ul of sterile water to dissolve the DNA.
3. Close the tube and incubate for 10 minutes at room temperature.
4. Briefly vortex the tube and then do a quick spin (less than 5000xg) to concentrate the liquid at the bottom.
5. Store the suspended plasmid at -20°C. The DNA is stable for at least one year from date of shipping when stored at -20°C.

RefSeq: [NM_011014.3](#)

RefSeq Size: 1591 bp

RefSeq ORF: 672 bp

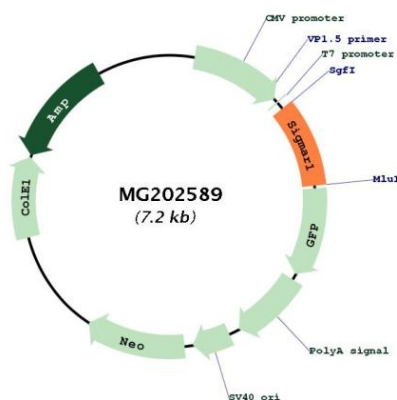
Locus ID: 18391

UniProt ID: [O55242](#)

Cytogenetics: 4 A5

Gene Summary: This gene encodes a transmembrane protein located in the endoplasmic reticulum. The encoded protein is a receptor that binds several endogenous ligands, including N,N-dimethyltryptamine, progesterone and pregnenolone and a variety of non-opiate compounds. The encoded protein plays a role in regulating the activity of ion channels, acting as a chaperone and protecting cells from oxidative stress. In humans, this receptor has been associated with Alzheimer's and Parkinson's diseases, stroke and numerous disease conditions such as depression, pain and addiction. Alternative splicing results in multiple transcript variants encoding different isoforms.[provided by RefSeq, Nov 2013]

Product images:



Circular map for MG202589