

Product datasheet for **MG202577**

Rab32 (NM_026405) Mouse Tagged ORF Clone

Product data:

Product Type: Expression Plasmids
Product Name: Rab32 (NM_026405) Mouse Tagged ORF Clone
Tag: TurboGFP
Symbol: Rab32
Synonyms: 2810011A17Rik; AU022057
Mammalian Cell Selection: Neomycin
Vector: pCMV6-AC-GFP (PS100010)
E. coli Selection: Ampicillin (100 ug/mL)
ORF Nucleotide Sequence: >MG202577 representing NM_026405
Red=Cloning site Blue=ORF Green=Tags(s)

TTTTGTAATACGACTCACTATAGGGCGGCCGGAATTCGTCGACTGGATCCGGTACCGAGGAGATCTGCC
GCC**CGATCGCC**

ATGGCGGGCGAGGGACTAGGGCAACAGGGCGCGTCGGCCACCGCGGCCGGAGACCCGAGAGCACCTCT
TTAAGGTGCTGGTCATCGGCGAGCTCGGCGTGGTAAGACGAGCATCATCAAGCGCTACGTGCACCAGCT
CTTCTCCAGCACTACCGCGCCACCATTGGCGTGGACTTCGCCCTCAAAGTTCTCAACTGGGACAGCAGG
ACGCTCGTGCCCTGCAGCTGTGGGATATCGCGGGACAGGAACGGTTTGGCAACATGACTCGAGTATACT
ATAAGGAAGCTCTTGGAGCATTTGTAGTCTTTGATATATCAAGAAGTTCTACATTTGATGCAGTCCTAAA
ATGGAAAACGATCTGGATAGTAAAGTTTCATCTTCCCAACGGCAGCCCCATTCTGCTGTCTCCTAGCT
AACAAATGTGACCAGAAGAAGGACAACAGCCAGAGTCCTTCCAGATGGACCAGTTTTGTAAAGACCATG
GCTTCAGTGGATGGTTTGAACCTCTGCCAAGGATAATATAAACATCGACGAGGCCACCCGCTTCTAGT
GGAAAACATGCTTCAAACCAGCAAAGCTTTCCTAGTGAAGAAATCGACCTGGACAGAATTAACCTGGTA
GAGGAGCCCCCAACAAGGCCAGGTCCCAGTGTCTGC

ACGCGTACGCGGCCGCTCGAG - GFP Tag - GTTTAA



[View online »](#)

Protein Sequence: >MG202577 representing NM_026405
 Red=Cloning site Green=Tags(s)

MAGEGLGQQGASATAAPETREHLFKVLVIGELGVGKTSIIKRYVHQLFSQHYRATIGVDFALKVLNWDSR
 TLVRLQLWDIAGQERFGNMTRVYKEALGAFVVFDIRSSTFDVAVLKWKNDLDSKVHLPNGSPIPAVLLA
 NKCDQKKDNSQSPSQMDQFCKDHGFSWFETSAKDNINIDEATRFLVENMLANQQSFPSEEIDLDRIKLV
 EEPPTTKPRSQCC

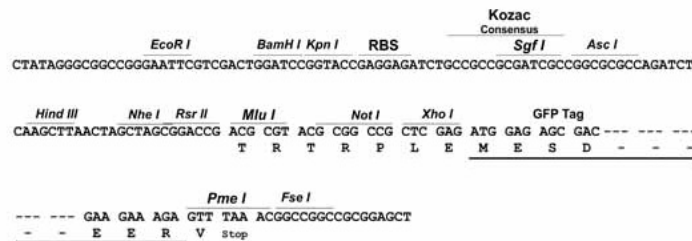
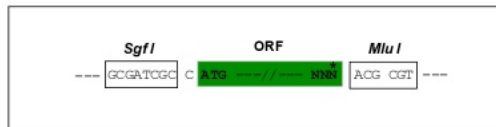
TRTRPLE - GFP Tag - V

Chromatograms: https://cdn.origene.com/chromatograms/ja1768_a06.zip

Restriction Sites: SgfI-MluI

Cloning Scheme:

Cloning sites used for ORF Shuttling:



ACCN: NM_026405

ORF Size: 669 bp

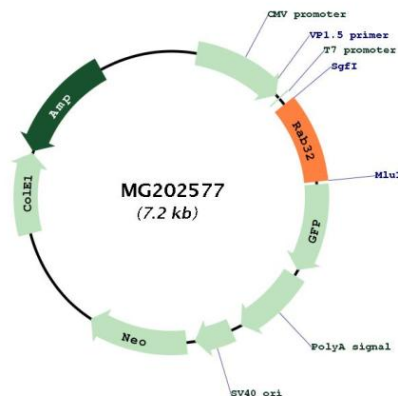
OTI Disclaimer: Due to the inherent nature of this plasmid, standard methods to replicate additional amounts of DNA in E. coli are highly likely to result in mutations and/or rearrangements. Therefore, OriGene does not guarantee the capability to replicate this plasmid DNA. Additional amounts of DNA can be purchased from OriGene with batch-specific, full-sequence verification at a reduced cost. Please contact our customer care team at custsupport@origene.com or by calling 301.340.3188 option 3 for pricing and delivery.

The molecular sequence of this clone aligns with the gene accession number as a point of reference only. However, individual transcript sequences of the same gene can differ through naturally occurring variations (e.g. polymorphisms), each with its own valid existence. This clone is substantially in agreement with the reference, but a complete review of all prevailing variants is recommended prior to use. [More info](#)

OTI Annotation: This clone was engineered to express the complete ORF with an expression tag. Expression varies depending on the nature of the gene.

Components:	The ORF clone is ion-exchange column purified and shipped in a 2D barcoded Matrix tube containing 10ug of transfection-ready, dried plasmid DNA (reconstitute with 100 ul of water).
Reconstitution Method:	<ol style="list-style-type: none">1. Centrifuge at 5,000xg for 5min.2. Carefully open the tube and add 100ul of sterile water to dissolve the DNA.3. Close the tube and incubate for 10 minutes at room temperature.4. Briefly vortex the tube and then do a quick spin (less than 5000xg) to concentrate the liquid at the bottom.5. Store the suspended plasmid at -20°C. The DNA is stable for at least one year from date of shipping when stored at -20°C.
RefSeq:	NM_026405.2 , NP_080681.1
RefSeq Size:	2055 bp
RefSeq ORF:	672 bp
Locus ID:	67844
UniProt ID:	Q9CZE3
Cytogenetics:	10 A1
Gene Summary:	Acts as an A-kinase anchoring protein by binding to the type II regulatory subunit of protein kinase A and anchoring it to the mitochondrion. Also involved in synchronization of mitochondrial fission. Plays a role in the maturation of phagosomes that engulf pathogens, such as S.aureus and Mycobacterium (By similarity). Plays an important role in the control of melanin production and melanosome biogenesis (By similarity). In concert with RAB38, regulates the proper trafficking of melanogenic enzymes TYR, TYRP1 and DCT/TYRP2 to melanosomes in melanocytes (PubMed:26620560).[UniProtKB/Swiss-Prot Function]

Product images:



Circular map for MG202577