

## Product datasheet for **MG202518**

### **Gca (NM\_145523) Mouse Tagged ORF Clone**

#### Product data:

**Product Type:** Expression Plasmids  
**Tag:** TurboGFP  
**Symbol:** Gca  
**Synonyms:** 5133401E04Rik; AI573844  
**Mammalian Cell Selection:** Neomycin  
**Vector:** pCMV6-AC-GFP (PS100010)  
**E. coli Selection:** Ampicillin (100 ug/mL)

**ORF Nucleotide Sequence:** >MG202518 representing NM\_145523  
Red=Cloning site Blue=ORF Green=Tags(s)

TTTTGTAATACGACTACTATAGGGCGCCGGGAATTCGTCGACTGGATCCGGTACCGAGGAGATCTGCC  
GCC**CGATCGCC**

ATGGCCTACCCGGGATACGGAGGGCGTTTGGAACTTCAGTGGTCAGATTCCAGGCATGCAAAATGCAGA  
TGGCCAGCCAATGCCAGGGGCAGGTCCTCAATATGTTCTCTGGTGGCTACCTGGATACCTGGGTTATTC  
TGACAGCTACTCCCTGCCGACGACTCCATGTGGACTTATTCACAGCTGTTGCTGGTCAGGATGGTGAG  
GTGGATGCTGAGGAAGTGCAGAGATGCTTGACCCAGTCTGGAATTAGTGGAACTTACGCACCTTTCAGTT  
TGGAAACCTGCAGAATTATGATTGCCATGTTGGATAGAGACTACACAGGAAAAATGGGGTTCAACGAATT  
CAAGGAGCTTTGGGCCGCTCTTAATGCCTGGAAGCAGAAGTTCATGACCATTGACCAAGATCAAAGTGGC  
ACAGTAGAACATCATGAGCTGAGTCAAGCCATCGCTCTTATGGGCTACAGGTTGAGTCCACAGACATTAG  
CTGCAATTGTCAGACGCTACAGCAAGAATGGCCGATTTTCTTTGATGACTATGTTGCCTGCTGTGTGAA  
GCTGCGGCCCTGACAGATTTCTTTAGGCGAAGAGACCACTTGCAACAAGGGATTGTGAATTCATGTAT  
GAAGATTTTTGCAGGGCACTATGACAATT

**ACGCGT**ACGCGGCCGCTCGAG - GFP Tag - GTTTAA

**Protein Sequence:** >MG202518 representing NM\_145523  
Red=Cloning site Green=Tags(s)

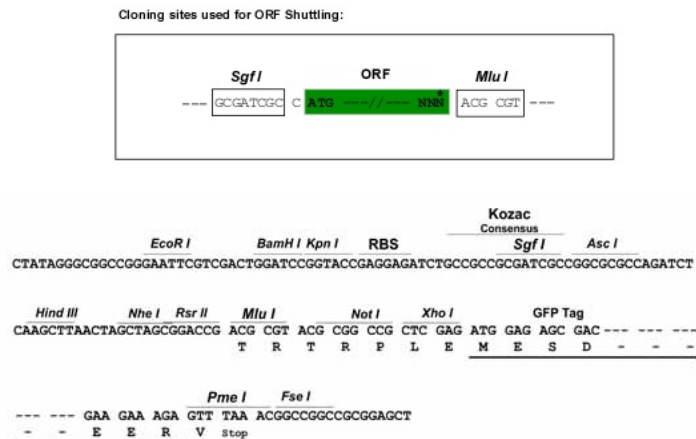
MAYPGYGGAFGNFSGQIPGMQMQMGQMPMPGAGPNMFSGGYPGYLYGYSYSPADDSMWTYFTAVAGQDGE  
VDAEELQRCLTQSGISGTYPFSLQETCRIMIAMLDRDYGKMGFNEFKELWAALNAWKQNFMTIDQDQSG  
TVEHHELSQAIALMGYRLSPQTLAAIVRRYSKNGRIFDDYVACCVKLRALTDFFRRRDHLQQGIVNFMY  
EDFLQGTMTI

**TRTRPLE** - GFP Tag - V



**Restriction Sites:** SgfI-MluI

**Cloning Scheme:**



**ACCN:** NM\_145523

**ORF Size:** 660 bp

**OTI Disclaimer:** The molecular sequence of this clone aligns with the gene accession number as a point of reference only. However, individual transcript sequences of the same gene can differ through naturally occurring variations (e.g. polymorphisms), each with its own valid existence. This clone is substantially in agreement with the reference, but a complete review of all prevailing variants is recommended prior to use. [More info](#)

**OTI Annotation:** This clone was engineered to express the complete ORF with an expression tag. Expression varies depending on the nature of the gene.

**Components:** The ORF clone is ion-exchange column purified and shipped in a 2D barcoded Matrix tube containing 10ug of transfection-ready, dried plasmid DNA (reconstitute with 100 ul of water).

**Reconstitution Method:**

1. Centrifuge at 5,000xg for 5min.
2. Carefully open the tube and add 100ul of sterile water to dissolve the DNA.
3. Close the tube and incubate for 10 minutes at room temperature.
4. Briefly vortex the tube and then do a quick spin (less than 5000xg) to concentrate the liquid at the bottom.
5. Store the suspended plasmid at -20°C. The DNA is stable for at least one year from date of shipping when stored at -20°C.

**Note:** Plasmids are not sterile. For experiments where strict sterility is required, filtration with 0.22um filter is required.

**RefSeq:** [NM\\_145523.1](#)

RefSeq Size: 3289 bp

RefSeq ORF: 663 bp

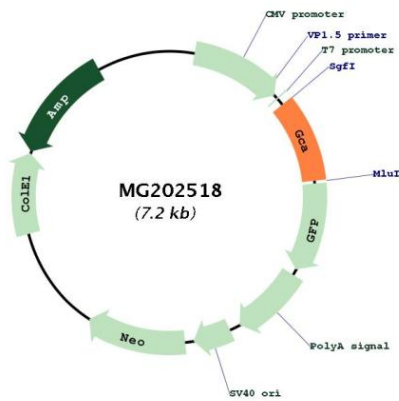
Locus ID: 227960

UniProt ID: [Q8VC88](#)

Cytogenetics: 2 C1.3

Gene Summary: Calcium-binding protein that may play a role in the adhesion of neutrophils to fibronectin. May play a role in the formation of focal adhesions.[UniProtKB/Swiss-Prot Function]

**Product images:**



Circular map for MG202518