

Product datasheet for **MG202481**

Amelx (NM_001081978) Mouse Tagged ORF Clone

Product data:

Product Type:	Expression Plasmids
Product Name:	Amelx (NM_001081978) Mouse Tagged ORF Clone
Tag:	TurboGFP
Symbol:	Amelx
Synonyms:	ALGN; Amel; Amg; AMGL; AMGX; LRAP; Rgsc888
Mammalian Cell Selection:	Neomycin
Vector:	pCMV6-AC-GFP (PS100010)
E. coli Selection:	Ampicillin (100 ug/mL)
ORF Nucleotide Sequence:	>MG202481 representing NM_001081978 Red=Cloning site Blue=ORF Green=Tags(s)

TTTTGTAATACGACTCACTATAGGGCGGCCGGAATTCGTCGACTGGATCCGGTACCGAGGAGATCTGCC
GCC**CGATCGCC**

ATGGGGACCTGGATTTTGTTCCTGCCTCCTGGGAGCAGCTTTTGCTATGCCCTACCACCTCATCCTG
GAAGCCCTGGTTATCAACTTAAGCTATGAGGTGCTTACCCCTTGAAGTGTACCAGAGCATGATAAG
GCAGCCGATCCTTCCTATGGTTACGAACCCATGGGTGGATGGCTGCACCACCAATCATCCCTGTGCTG
TCTCAACAGCATCCCCGAGTCACACCTTCAGCCTCATCACCACCTTCCCGTGGTGCCAGCTCAACAGC
CCGTGGCCCCCAGCAACCAATGATGCCAGTTCCTGGCCACCCTCCATGACTCCAACCCAACACCATCA
GCCAAACATCCCTCCATCCGCCCAGCAGCCCTCCAGCAGCCCTCCAGCCCCAGGCCATTCCACCCAG
TCTCATCAGCCATGCAGCCCCAGTCACCTCTGCATCCCATGCAGCCCTGGCACCACAGCCACCTCTGC
CTCCACTGTTCTCCATGCAGCCCTGTCCCCATTCTTCTGAGCTGCCTCTGGAAGCTTGGCCAGCGAC
AGACAAGACCAAGCGGGAAGAAGTGGCGTTTTCTCCTATGAAGTGGTACCAGGGCATGACAAGGCATCCG
CTTAACATGAAAAGCACAAACAGAAAAA

ACGCGTACGCGGCCGCTCGAG - GFP Tag - GTTTAA



[View online »](#)

Protein Sequence: >MG202481 representing NM_001081978
 Red=Cloning site Green=Tags(s)

MGTWILFACLLGAAFAMPLPPHPGSPGYINLSYEVLTPLKWYQSMIRQPYPSPYGYEPMGGWLHHQIIPVL
 SQQHPPSHTLQPHHLLPVVPAQQPVAPQQPMPVPVGHHSMTPTQHHPNIPPSAQQPFQQPFQQAIPPQ
 SHQPMQPSPLHPMQPLAPQPPLPLFSMQPLSPILPELPLEAWPATDKTKREEVAFSPMKWYQGMTRHP
 LNMESTTEK

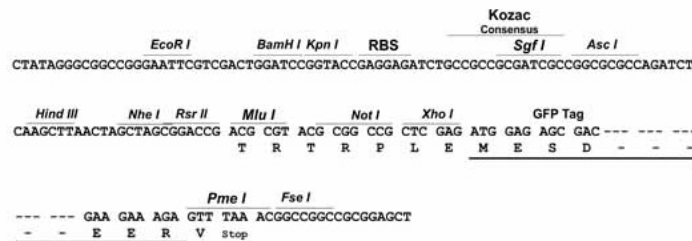
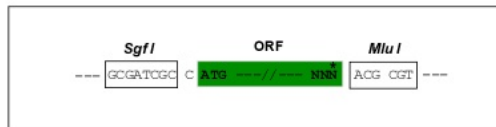
TRTRPLE - GFP Tag - V

Chromatograms: https://cdn.origene.com/chromatograms/ja3223_b07.zip

Restriction Sites: SgfI-MluI

Cloning Scheme:

Cloning sites used for ORF Shuttling:



ACCN: NM_001081978

ORF Size: 657 bp

OTI Disclaimer: The molecular sequence of this clone aligns with the gene accession number as a point of reference only. However, individual transcript sequences of the same gene can differ through naturally occurring variations (e.g. polymorphisms), each with its own valid existence. This clone is substantially in agreement with the reference, but a complete review of all prevailing variants is recommended prior to use. [More info](#)

OTI Annotation: This clone was engineered to express the complete ORF with an expression tag. Expression varies depending on the nature of the gene.

Components: The ORF clone is ion-exchange column purified and shipped in a 2D barcoded Matrix tube containing 10ug of transfection-ready, dried plasmid DNA (reconstitute with 100 ul of water).

Reconstitution Method:

1. Centrifuge at 5,000xg for 5min.
2. Carefully open the tube and add 100ul of sterile water to dissolve the DNA.
3. Close the tube and incubate for 10 minutes at room temperature.
4. Briefly vortex the tube and then do a quick spin (less than 5000xg) to concentrate the liquid at the bottom.
5. Store the suspended plasmid at -20°C. The DNA is stable for at least one year from date of shipping when stored at -20°C.

RefSeq: [NM_001081978.2](#)

RefSeq Size: 828 bp

RefSeq ORF: 660 bp

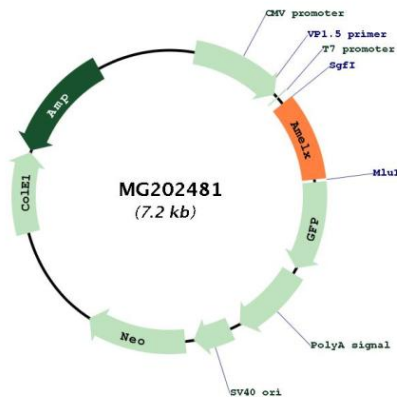
Locus ID: 11704

UniProt ID: [P63277](#)

Cytogenetics: X 78.95 cM

Gene Summary: Plays a role in the biomineralization of teeth. Seems to regulate the formation of crystallites during the secretory stage of tooth enamel development. Thought to play a major role in the structural organization and mineralization of developing enamel.[UniProtKB/Swiss-Prot Function]

Product images:



Circular map for MG202481