

## Product datasheet for **MG202476**

### **Pigf (NM\_008838) Mouse Tagged ORF Clone**

#### Product data:

Product Type: Expression Plasmids  
Product Name: Pigf (NM\_008838) Mouse Tagged ORF Clone  
Tag: TurboGFP  
Symbol: Pigf  
Mammalian Cell Selection: Neomycin  
Vector: pCMV6-AC-GFP (PS100010)  
E. coli Selection: Ampicillin (100 ug/mL)  
ORF Nucleotide Sequence: >MG202476 representing NM\_008838  
Red=Cloning site Blue=ORF Green=Tags(s)

TTTTGTAATACGACTCACTATAGGGCGGCCGGAATTCGTCGACTGGATCCGGTACCGAGGAGATCTGCC  
GCC**CGATCGCC**

ATGAAAGATACTGACATCAAGAGACTTCTGTATACCAATCTTTTGTGCGTATTTTCAATTTTCTAAGCA  
TTTTATTCCGTCCTTCTTCGTGGACAACCTTCTCAGTATTGGAAGCTCATTTGACCTGGCTGTGTATCTG  
CTCTGCTTCTGTGACCACTGTCAATCTTGTGCGTACTAGTAGTAAACCGAATGTGTCCTCTAAAAGA  
AGTTCATTGTACATAAGGTAACGCGAGCTTTGAAATGCTGTGCTTCTCCTTATGCTTTGTTTCTCC  
TTCACATCATTTTGTCTATATGGAGCACCATAATCGAGTTGGTGTGAAACGTTTTTATTTGCAGT  
TGTTTTGTCTACTTTTACTACAGTACCTTGTCTCTGTTTGTAGGACCAACCTCAAAGCATGGCTGAGA  
GTTTTTCAGTAGAAATGGAGTTACATCTATTTGGGAGAATAGTCTTCAGATCACTACAATTTCTAGTTTCA  
CAGGAGCGTGGCTTGGAGCATTTCTATCCACTGGATTGGGAAAGACCGTGGCAGGTGTGGCCCATCTC  
CTGTACACTCGGAGCGACCTTTGGCTACGTGGCTGGCCTGGTTATCTCGCCACTCTGGATCTACTGGAAT  
AGAAAGCAGCTTACATACAAGAACAAT

**ACGCGT**ACGCGGCCGCTCGAG - GFP Tag - GTTTAA

Protein Sequence: >MG202476 representing NM\_008838  
Red=Cloning site Green=Tags(s)

MKDTDIKRLLYTNLLCVFSIFLSIFIPISFFVDNFSVLEAHLTWLCICSASVTTVNLLSYLVVKNVSSKR  
SSLSHKVTRALKCCVFFLMSCFLLHIIFVLYGAPLIELVLETFLFAVVLSTFTTVPCLCLLGNLKAWL  
VFSRNGVTSIWENSLQITTISSFTGAWLGAFPIPLDWERPWQVWPISCTLGATFGYVAGLVISPLWIYWN  
RKQLTYKNN

**TRTRPLE** - GFP Tag - V

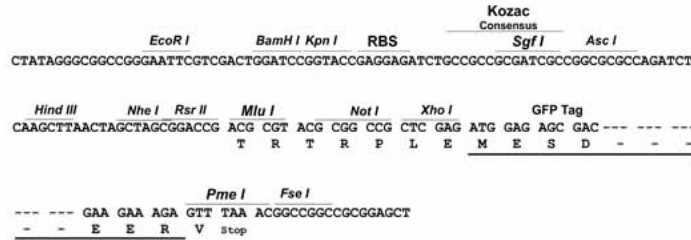
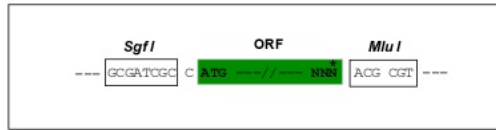


[View online »](#)

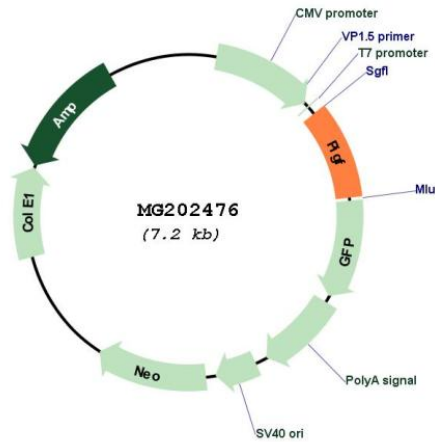
Restriction Sites: SgfI-MluI

Cloning Scheme:

Cloning sites used for ORF Shuttling:



Plasmid Map:



ACCN: NM\_008838

ORF Size: 657 bp

OTI Disclaimer: The molecular sequence of this clone aligns with the gene accession number as a point of reference only. However, individual transcript sequences of the same gene can differ through naturally occurring variations (e.g. polymorphisms), each with its own valid existence. This clone is substantially in agreement with the reference, but a complete review of all prevailing variants is recommended prior to use. [More info](#)

OTI Annotation: This clone was engineered to express the complete ORF with an expression tag. Expression varies depending on the nature of the gene.

<b>Components:</b>	The ORF clone is ion-exchange column purified and shipped in a 2D barcoded Matrix tube containing 10ug of transfection-ready, dried plasmid DNA (reconstitute with 100 ul of water).
<b>Reconstitution Method:</b>	<ol style="list-style-type: none"><li>1. Centrifuge at 5,000xg for 5min.</li><li>2. Carefully open the tube and add 100ul of sterile water to dissolve the DNA.</li><li>3. Close the tube and incubate for 10 minutes at room temperature.</li><li>4. Briefly vortex the tube and then do a quick spin (less than 5000xg) to concentrate the liquid at the bottom.</li><li>5. Store the suspended plasmid at -20°C. The DNA is stable for at least one year from date of shipping when stored at -20°C.</li></ol>
<b>RefSeq:</b>	<u><a href="#">NM_008838.1</a></u> , <u><a href="#">NP_032864.1</a></u>
<b>RefSeq Size:</b>	980 bp
<b>RefSeq ORF:</b>	660 bp
<b>Locus ID:</b>	18701
<b>UniProt ID:</b>	<u><a href="#">O09101</a></u>
<b>Cytogenetics:</b>	17 56.9 cM
<b>Gene Summary:</b>	Involved in GPI-anchor biosynthesis through the transfer of ethanolamine phosphate to the third mannose of GPI.[UniProtKB/Swiss-Prot Function]