

## Product datasheet for **MG202467**

### Scn1b (NM\_011322) Mouse Tagged ORF Clone

#### Product data:

**Product Type:** Expression Plasmids  
**Product Name:** Scn1b (NM\_011322) Mouse Tagged ORF Clone  
**Tag:** TurboGFP  
**Symbol:** Scn1b  
**Mammalian Cell Selection:** Neomycin  
**Vector:** pCMV6-AC-GFP (PS100010)  
**E. coli Selection:** Ampicillin (100 ug/mL)  
**ORF Nucleotide Sequence:** >MG202467 representing NM\_011322  
Red=Cloning site Blue=ORF Green=Tags(s)

TTTTGTAATACGACTCACTATAGGGCGGCCGGGAATTCGTCGACTGGATCCGGTACCGAGGAGATCTGCC  
GCC**CGCATCGCC**

ATGGGGACGCTGCTGGCTCTCGTGGTGGGCGGGCGCTGGTATCCTCAGCCTGGGGGGGCTGCGTGGAGG  
TGGATCCGATACCGAGGCTGTGTATGGGATGACCTTCAAATCCTGTGCATCTCCTGTAAGCGTCGTAG  
TGAGACCACCGCCGAAACCTTACGGAGTGGACCTCCGCCAGAAGGGGACAGAGGAATTTGTAAGATC  
CTACGCTATGAGAATGAGGTGCTGCAGCTGGAGGAAGATGAGCGCTTTGAGGGCCGAGTGGTGTGGAACG  
GTAGTCGGGGCACCAAGGACCTGCAGGACCTGTCCATCTTCATCACCAACGTCACCTACAACCACTCTGG  
CGACTACGAATGTCACGTCTACCGTCTCCTCTTTGATAATTATGAGCACAACACCAGCGTCGTCGAAG  
AAGATCCACCTGGAGGTGGTGGACAAGGCCAACAGAGATATGGCATCCATCGTGTGAGAGATCATGATGT  
ACGTGCTCATTGTGGTGTGACCATATGGCTTGTGGCAGAGATGGTGTACTGCTACAAGAAGATTGCTGC  
TGCTACGGAGGCTGCTGCACAAGAGAACGCCTCAGAATACCTGGCCATTACATCCGAGAGCAAAGAAAAC  
TGTACAGGCGTCCAGGTGGCTGAA

**ACGCGT**ACGCGGCCGCTCGAG - GFP Tag - GTTTAA

**Protein Sequence:** >MG202467 representing NM\_011322  
Red=Cloning site Green=Tags(s)

MGTLALVVGAAALVSSAWGGCVEVSDTEAVYGMTFKILCISCKRRSETTAETFTWTFRQKGTEEFVKI  
LRYENEVLQLEEDERFEGRVVWNGSRGKDLQDLSIFITNVTYNHSGDYECHVYRLLFFDNYEHNTSVVK  
KIHLEVDKANRDMASIVSEIMMYVLIVLTIWLVAEMVYCYKKIAAATEAAAQENASEYLAITSESKEN  
CTGVQVAE

**TRTRPLE** - GFP Tag - V

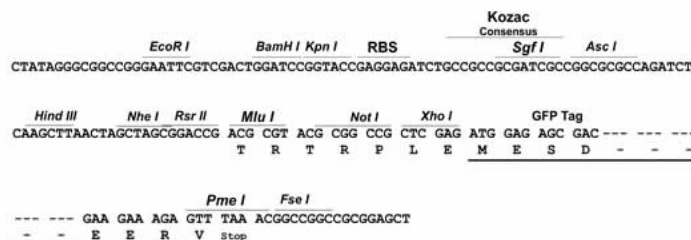


Chromatograms: [https://cdn.origene.com/chromatograms/ja1643\\_a11.zip](https://cdn.origene.com/chromatograms/ja1643_a11.zip)

Restriction Sites: SgfI-MluI

Cloning Scheme:

Cloning sites used for ORF Shutting:



ACCN: NM\_011322

ORF Size: 654 bp

OTI Disclaimer: The molecular sequence of this clone aligns with the gene accession number as a point of reference only. However, individual transcript sequences of the same gene can differ through naturally occurring variations (e.g. polymorphisms), each with its own valid existence. This clone is substantially in agreement with the reference, but a complete review of all prevailing variants is recommended prior to use. [More info](#)

OTI Annotation: This clone was engineered to express the complete ORF with an expression tag. Expression varies depending on the nature of the gene.

Components: The ORF clone is ion-exchange column purified and shipped in a 2D barcoded Matrix tube containing 10ug of transfection-ready, dried plasmid DNA (reconstitute with 100 ul of water).

Reconstitution Method:

1. Centrifuge at 5,000xg for 5min.
2. Carefully open the tube and add 100ul of sterile water to dissolve the DNA.
3. Close the tube and incubate for 10 minutes at room temperature.
4. Briefly vortex the tube and then do a quick spin (less than 5000xg) to concentrate the liquid at the bottom.
5. Store the suspended plasmid at -20°C. The DNA is stable for at least one year from date of shipping when stored at -20°C.

RefSeq: [NM\\_011322.3](#)

RefSeq Size: 1568 bp

RefSeq ORF: 657 bp

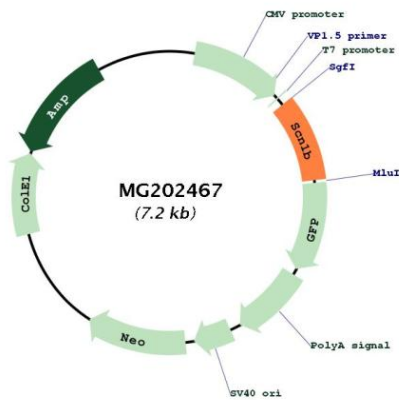
Locus ID: 20266

UniProt ID: [P97952](#)

Cytogenetics: 7 19.3 cM

**Gene Summary:** Regulatory subunit of multiple voltage-gated sodium channel complexes that play important roles in excitable membranes in brain, heart and skeletal muscle. Enhances the presence of the pore-forming alpha subunit at the cell surface and modulates channel gating characteristics and the rate of channel inactivation. Modulates the activity of a variety of pore-forming alpha subunits, such as SCN1A, SCN2A, SCN3A, SCN4A, SCN5A and SCN10A. [UniProtKB/Swiss-Prot Function]

**Product images:**



Circular map for MG202467